

CYS1 Antibody (C-term)
Purified Rabbit Polyclonal Antibody (Pab)
Catalog # AP20652c**Specification**

CYS1 Antibody (C-term) - Product Information

Application	WB, IHC-P,E
Primary Accession	Q717R9
Reactivity	Human, Mouse
Host	Rabbit
Clonality	Polyclonal
Isotype	Rabbit IgG
Antigen Region	128-158

CYS1 Antibody (C-term) - Additional Information**Gene ID** 192668**Other Names**

Cystin-1, Cilia-associated protein, CYS1

Target/Specificity

This CYS1 antibody is generated from a rabbit immunized with a KLH conjugated synthetic peptide with amino acid positions 128-158 of human CYS1.

Dilution

WB~~1:1000

IHC-P~~1:25

E~~Use at an assay dependent concentration.

Format

Purified polyclonal antibody supplied in PBS with 0.09% (W/V) sodium azide. This antibody is purified through a protein A column, followed by peptide affinity purification.

Storage

Maintain refrigerated at 2-8°C for up to 2 weeks. For long term storage store at -20°C in small aliquots to prevent freeze-thaw cycles.

Precautions

CYS1 Antibody (C-term) is for research use only and not for use in diagnostic or therapeutic procedures.

CYS1 Antibody (C-term) - Protein Information**Name** CYS1**Cellular Location**

Cell projection, cilium membrane; Lipid-anchor. Cytoplasm, cytoskeleton, cilium axoneme.

Note=Expression is enriched in the ciliary axoneme. Localization to cilium is mediated via interaction with UNC119 and UNC119B, which bind to the myristoyl moiety of the N- terminus

Tissue Location

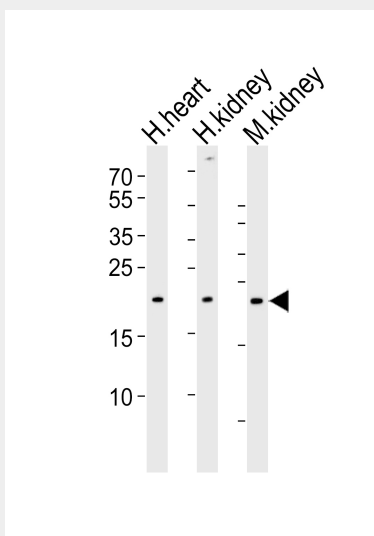
Expressed at high levels in the kidney and pancreas. Moderate expression seen in the skeletal muscle, liver and heart. A weak expression seen in the brain, lung, uterus, prostate, testis, small intestine and colon

CYS1 Antibody (C-term) - Protocols

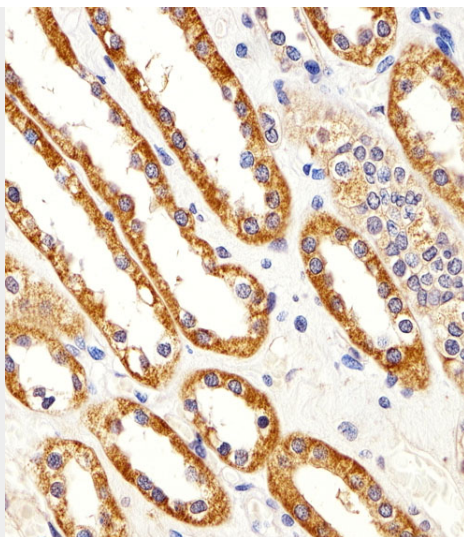
Provided below are standard protocols that you may find useful for product applications.

- [Western Blot](#)
- [Blocking Peptides](#)
- [Dot Blot](#)
- [Immunohistochemistry](#)
- [Immunofluorescence](#)
- [Immunoprecipitation](#)
- [Flow Cytometry](#)
- [Cell Culture](#)

CYS1 Antibody (C-term) - Images



Western blot analysis of lysates from human heart, human kidney and mouse kidney tissue lysate(from left to right), using CYS1 Antibody (C-term)(Cat. #AP20652c). AP20652c was diluted at 1:1000 at each lane. A goat anti-rabbit IgG H&L(HRP) at 1:5000 dilution was used as the secondary antibody. Lysates at 35ug per lane.



Immunohistochemical analysis of paraffin-embedded H.kidney section using CYS1 Antibody (C-term)(Cat#AP20652c). AP20652c was diluted at 1:25 dilution. A peroxidase-conjugated goat anti-rabbit IgG at 1:400 dilution was used as the secondary antibody, followed by DAB staining.

CYS1 Antibody (C-term) - References

Fliegauf M.,et al.Pediatr. Nephrol. 18:498-505(2003).
Hou X.,et al.J. Clin. Invest. 109:533-540(2002).
Wright K.J.,et al.Genes Dev. 25:2347-2360(2011).