

**FATE1 Antibody (Center)**  
**Purified Rabbit Polyclonal Antibody (Pab)**  
**Catalog # AP20657c****Specification**

---

**FATE1 Antibody (Center) - Product Information**

Application	WB,E
Primary Accession	<a href="#">Q969F0</a>
Reactivity	Human
Host	Rabbit
Clonality	Polyclonal
Isotype	Rabbit IgG
Calculated MW	20712

**FATE1 Antibody (Center) - Additional Information****Gene ID** 89885**Other Names**

Fetal and adult testis-expressed transcript protein, Cancer/testis antigen 43, CT43, Tumor antigen BJ-HCC-2, FATE1, FATE

**Target/Specificity**

This FATE1 antibody is generated from a rabbit immunized with a KLH conjugated synthetic peptide between 107-140 amino acids from the Central region of human FATE1.

**Dilution**

WB~~1:1000

E~~Use at an assay dependent concentration.

**Format**

Purified polyclonal antibody supplied in PBS with 0.09% (W/V) sodium azide. This antibody is purified through a protein A column, followed by peptide affinity purification.

**Storage**

Maintain refrigerated at 2-8°C for up to 2 weeks. For long term storage store at -20°C in small aliquots to prevent freeze-thaw cycles.

**Precautions**

FATE1 Antibody (Center) is for research use only and not for use in diagnostic or therapeutic procedures.

**FATE1 Antibody (Center) - Protein Information****Name** FATE1**Synonyms** FATE

**Function** Involved in the regulation of endoplasmic reticulum (ER)- mitochondria coupling. Negatively regulates the ER-mitochondria distance and Ca(2+) transfer from ER to mitochondria possibly implicating it in the regulation of apoptosis (PubMed:[27402544](#)). May collaborate with RNF183 to restrain BIK protein levels thus regulating apoptotic signaling (PubMed:[26567849](#)).

#### **Cellular Location**

Mitochondrion. Mitochondrion outer membrane. Endoplasmic reticulum membrane; Single-pass membrane protein; Cytoplasmic side Note=Localized to specific membrane structures termed mitochondria- associated membranes (MAMs) which connect the endoplasmic reticulum (ER) and the mitochondria. Also associated with the outer surface of mitochondria at sites that are not in close contact with the ER

#### **Tissue Location**

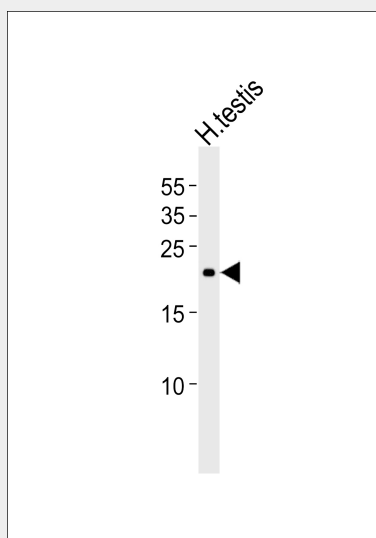
Testis-specific in fetus (aged from 6 to 11 weeks). In adult, expressed predominantly in testis, with some expression in lung, heart, kidney, adrenal gland and whole brain (PubMed:11694338) Highly expressed in certain types of cancer tissues such as hepatocellular carcinoma, colon and gastric cancer. Weakly expressed in normal pancreas (PubMed:12865919).

### **FATE1 Antibody (Center) - Protocols**

Provided below are standard protocols that you may find useful for product applications.

- [Western Blot](#)
- [Blocking Peptides](#)
- [Dot Blot](#)
- [Immunohistochemistry](#)
- [Immunofluorescence](#)
- [Immunoprecipitation](#)
- [Flow Cytometry](#)
- [Cell Culture](#)

### **FATE1 Antibody (Center) - Images**



Western blot analysis of lysate from human testis tissue lysate, using FATE1 Antibody (Center)(Cat. #AP20657c). AP20657c was diluted at 1:1000. A goat anti-rabbit IgG H&L(HRP) at 1:5000 dilution was used as the secondary antibody. Lysate at 35ug.

### **FATE1 Antibody (Center) - References**

Olesen C.,et al.Mol. Cell. Endocrinol. 184:25-32(2001).  
Dong X.-Y.,et al.Submitted (APR-2002) to the EMBL/GenBank/DDBJ databases.  
Ota T.,et al.Nat. Genet. 36:40-45(2004).  
Olesen C.,et al.Hum. Genet. 113:195-201(2003).