

**CERKL Antibody (N-term)**  
**Purified Rabbit Polyclonal Antibody (Pab)**  
**Catalog # AP20663a**

**Specification**

---

**CERKL Antibody (N-term) - Product Information**

Application	WB,E
Primary Accession	<a href="#">Q49MI3</a>
Reactivity	Human
Host	Rabbit
Clonality	Polyclonal
Isotype	Rabbit IgG
Calculated MW	62622

**CERKL Antibody (N-term) - Additional Information**

**Gene ID** 375298

**Other Names**

Ceramide kinase-like protein, CERKL

**Target/Specificity**

This CERKL antibody is generated from a rabbit immunized with a KLH conjugated synthetic peptide between 94-127 amino acids from the N-terminal region of human CERKL.

**Dilution**

WB~~1:1000

E~~Use at an assay dependent concentration.

**Format**

Purified polyclonal antibody supplied in PBS with 0.09% (W/V) sodium azide. This antibody is purified through a protein A column, followed by peptide affinity purification.

**Storage**

Maintain refrigerated at 2-8°C for up to 2 weeks. For long term storage store at -20°C in small aliquots to prevent freeze-thaw cycles.

**Precautions**

CERKL Antibody (N-term) is for research use only and not for use in diagnostic or therapeutic procedures.

**CERKL Antibody (N-term) - Protein Information**

**Name** CERKL

**Function** Has no detectable ceramide-kinase activity. Overexpression of CERKL protects cells from apoptosis in oxidative stress conditions.

**Cellular Location**

Cytoplasm. Nucleus, nucleolus. Note=Enriched in nucleoli. May shuttle between nucleus and cytoplasm. Isoform 5 is not enriched in the nucleoli

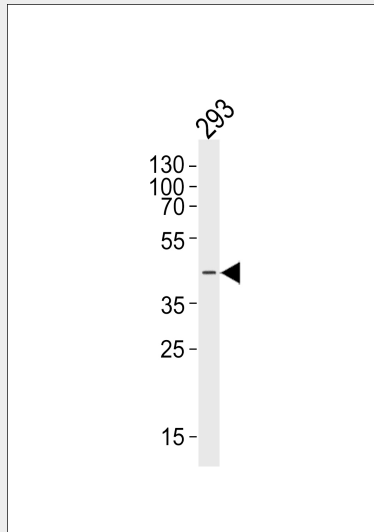
**Tissue Location**

Isoform 1 and isoform 2 are expressed in adult retina, liver and pancreas as well as in fetal brain, lung and kidney Isoform 3 is expressed in adult retina as well as in fetal lung and liver. Isoform 4 is expressed in adult retina, lung and kidney as well as in fetal lung and liver. Moderately expressed in retina, kidney, lung, testis, trachea, and pancreas. Weakly expressed in brain, placenta and liver.

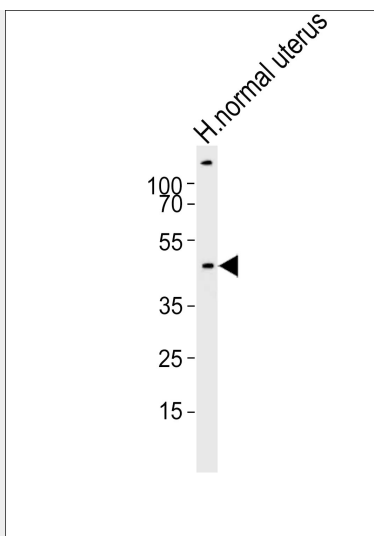
**CERKL Antibody (N-term) - Protocols**

Provided below are standard protocols that you may find useful for product applications.

- [Western Blot](#)
- [Blocking Peptides](#)
- [Dot Blot](#)
- [Immunohistochemistry](#)
- [Immunofluorescence](#)
- [Immunoprecipitation](#)
- [Flow Cytometry](#)
- [Cell Culture](#)

**CERKL Antibody (N-term) - Images**

Western blot analysis of lysate from 293 cell line, using CERKL Antibody (N-term)(Cat. #AP20663a). AP20663a was diluted at 1:1000. A goat anti-rabbit IgG H&L(HRP) at 1:5000 dilution was used as the secondary antibody. Lysate at 35ug.



Western blot analysis of lysate from human normal uterus tissue lysate, using CERKL Antibody (N-term)(Cat. #AP20663a). AP20663a was diluted at 1:1000. A goat anti-rabbit IgG H&L(HRP) at 1:10000 dilution was used as the secondary antibody. Lysate at 20ug.

#### **CERKL Antibody (N-term) - Background**

Has no detectable ceramide-kinase activity. Overexpression of CERKL protects cells from apoptosis in oxidative stress conditions.

#### **CERKL Antibody (N-term) - References**

- Tuson M.,et al.Am. J. Hum. Genet. 74:128-138(2004).
- Bornancin F.,et al.Biochim. Biophys. Acta 1687:31-43(2005).
- Ota T.,et al.Nat. Genet. 36:40-45(2004).
- Hillier L.W.,et al.Nature 434:724-731(2005).
- Rovina P.,et al.Biochim. Biophys. Acta 1791:1023-1030(2009).