

**MAP1LC3A Antibody (C-term)**  
**Purified Rabbit Polyclonal Antibody (Pab)**  
**Catalog # AP20664c**

**Specification**

---

**MAP1LC3A Antibody (C-term) - Product Information**

|                   |   |
|-------------------|---|
| Application       | WB,E  |
| Primary Accession | <a href="#">O9H492</a> , <a href="#">O9GZQ8</a>   |
| Other Accession   | <a href="#">O6XVN8</a> , <a href="#">O91VR7</a> , <a href="#">O2HJ23</a> , <a href="#">O9H492</a> |
| Reactivity        | Human   |
| Predicted         | Bovine, Mouse, Rat  |
| Host              | Rabbit  |
| Clonality         | Polyclonal  |
| Isotype           | Rabbit IgG  |

**MAP1LC3A Antibody (C-term) - Additional Information**

**Other Names**

Microtubule-associated proteins 1A/1B light chain 3A, Autophagy-related protein LC3 A, Autophagy-related ubiquitin-like modifier LC3 A, MAP1 light chain 3-like protein 1, MAP1A/MAP1B light chain 3 A, MAP1A/MAP1B LC3 A, Microtubule-associated protein 1 light chain 3 alpha, MAP1LC3A

**Target/Specificity**

This MAP1LC3A antibody is generated from a rabbit immunized with a KLH conjugated synthetic peptide between 100-141 amino acids from the C-terminal region of human MAP1LC3A.

**Dilution**

WB~~1:1000

**Format**

Purified polyclonal antibody supplied in PBS with 0.09% (W/V) sodium azide. This antibody is purified through a protein A column, followed by peptide affinity purification.

**Storage**

Maintain refrigerated at 2-8°C for up to 2 weeks. For long term storage store at -20°C in small aliquots to prevent freeze-thaw cycles.

**Precautions**

MAP1LC3A Antibody (C-term) is for research use only and not for use in diagnostic or therapeutic procedures.

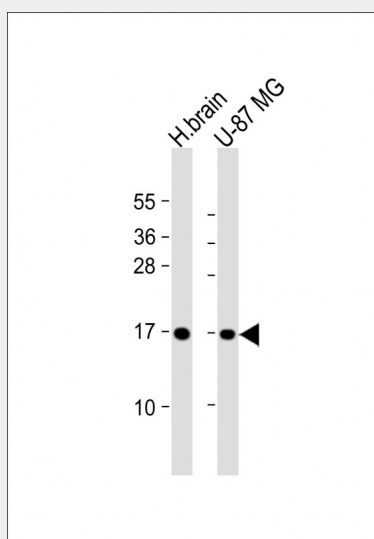
**MAP1LC3A Antibody (C-term) - Protein Information**

**MAP1LC3A Antibody (C-term) - Protocols**

Provided below are standard protocols that you may find useful for product applications.

- [Western Blot](#)
- [Blocking Peptides](#)
- [Dot Blot](#)
- [Immunohistochemistry](#)
- [Immunofluorescence](#)
- [Immunoprecipitation](#)
- [Flow Cytometry](#)
- [Cell Culture](#)

#### MAP1LC3A Antibody (C-term) - Images



All lanes : Anti-MAP1LC3A Antibody (C-term) at 1:1000 dilution Lane 1: human brain lysate Lane 2: U-87 MG whole cell lysate Lysates/proteins at 20 µg per lane. Secondary Goat Anti-Rabbit IgG, (H+L), Peroxidase conjugated at 1/10000 dilution. Predicted band size : 14 kDa Blocking/Dilution buffer: 5% NFD/MTBST.

#### MAP1LC3A Antibody (C-term) - Background

Ubiquitin-like modifier involved in formation of autophagosomal vacuoles (autophagosomes). Whereas LC3s are involved in elongation of the phagophore membrane, the GABARAP/GATE-16 subfamily is essential for a later stage in autophagosome maturation.

#### MAP1LC3A Antibody (C-term) - References

- He H., et al. *J. Biol. Chem.* 278:29278-29287(2003).  
Kalnina N., et al. Submitted (MAY-2003) to the EMBL/GenBank/DDBJ databases.  
Bechtel S., et al. *BMC Genomics* 8:399-399(2007).  
Deloukas P., et al. *Nature* 414:865-871(2001).  
Mural R.J., et al. Submitted (SEP-2005) to the EMBL/GenBank/DDBJ databases.