

IDH3G Antibody (N-term)
Purified Rabbit Polyclonal Antibody (Pab)
Catalog # AP20665a**Specification**

IDH3G Antibody (N-term) - Product Information

Application	WB,E
Primary Accession	P51553
Other Accession	P41565 , P70404 , P41564 , Q58CP0
Reactivity	Human
Predicted	Bovine, Monkey, Mouse, Rat
Host	Rabbit
Clonality	Polyclonal
Isotype	Rabbit IgG
Calculated MW	42794

IDH3G Antibody (N-term) - Additional Information**Gene ID** 3421**Other Names**

Isocitrate dehydrogenase [NAD] subunit gamma, mitochondrial, Isocitric dehydrogenase subunit gamma, NAD(+)-specific ICDH subunit gamma, IDH3G

Target/Specificity

This IDH3G antibody is generated from a rabbit immunized with a KLH conjugated synthetic peptide between 50-83 amino acids from the N-terminal region of human IDH3G.

Dilution

WB~~1:1000

E~~Use at an assay dependent concentration.

Format

Purified polyclonal antibody supplied in PBS with 0.09% (W/V) sodium azide. This antibody is purified through a protein A column, followed by peptide affinity purification.

Storage

Maintain refrigerated at 2-8°C for up to 2 weeks. For long term storage store at -20°C in small aliquots to prevent freeze-thaw cycles.

Precautions

IDH3G Antibody (N-term) is for research use only and not for use in diagnostic or therapeutic procedures.

IDH3G Antibody (N-term) - Protein Information**Name** IDH3G

Function Regulatory subunit which plays a role in the allosteric regulation of the enzyme catalyzing the decarboxylation of isocitrate (ICT) into alpha-ketoglutarate. The heterodimer composed of the alpha (IDH3A) and beta (IDH3B) subunits and the heterodimer composed of the alpha (IDH3A) and gamma (IDH3G) subunits, have considerable basal activity but the full activity of the heterotetramer (containing two subunits of IDH3A, one of IDH3B and one of IDH3G) requires the assembly and cooperative function of both heterodimers.

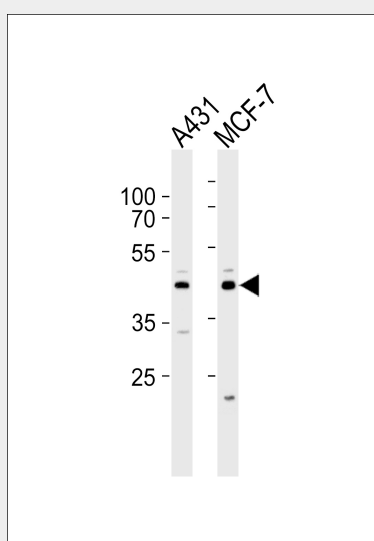
Cellular Location
Mitochondrion.

IDH3G Antibody (N-term) - Protocols

Provided below are standard protocols that you may find useful for product applications.

- [Western Blot](#)
- [Blocking Peptides](#)
- [Dot Blot](#)
- [Immunohistochemistry](#)
- [Immunofluorescence](#)
- [Immunoprecipitation](#)
- [Flow Cytometry](#)
- [Cell Culture](#)

IDH3G Antibody (N-term) - Images



Western blot analysis of lysates from A431, MCF-7 cell line (from left to right), using IDH3G Antibody (N-term)(Cat. #AP20665a). AP20665a was diluted at 1:1000 at each lane. A goat anti-rabbit IgG H&L(HRP) at 1:5000 dilution was used as the secondary antibody. Lysates at 35ug per lane.

IDH3G Antibody (N-term) - References

- Brenner V.,et al.Genomics 44:8-14(1997).
Kim Y.-O.,et al.J. Biol. Chem. 274:36866-36875(1999).
Ross M.T.,et al.Nature 434:325-337(2005).
Simpson J.C.,et al.EMBO Rep. 1:287-292(2000).
Burkard T.R.,et al.BMC Syst. Biol. 5:17-17(2011).

