

**LDB3 Antibody (N-term)**  
**Purified Rabbit Polyclonal Antibody (Pab)**  
**Catalog # AP20668a****Specification**

---

**LDB3 Antibody (N-term) - Product Information**

Application	WB,E
Primary Accession	<a href="#">O75112</a>
Other Accession	<a href="#">O9JKS4</a>
Reactivity	Mouse
Host	Rabbit
Clonality	Polyclonal
Isotype	Rabbit IgG
Calculated MW	77135

**LDB3 Antibody (N-term) - Additional Information****Gene ID** 11155**Other Names**

LIM domain-binding protein 3, Protein cypher, Z-band alternatively spliced PDZ-motif protein, LDB3  
([http://www.genenames.org/cgi-bin/gene\\_symbol\\_report?hgnc\\_id=15710](http://www.genenames.org/cgi-bin/gene_symbol_report?hgnc_id=15710))  
HGNC:15710

**Target/Specificity**

This LDB3 antibody is generated from a rabbit immunized with a KLH conjugated synthetic peptide between 101-134 amino acids from the N-terminal region of human LDB3.

**Dilution**

WB~~1:1000

E~~Use at an assay dependent concentration.

**Format**

Purified polyclonal antibody supplied in PBS with 0.09% (W/V) sodium azide. This antibody is purified through a protein A column, followed by peptide affinity purification.

**Storage**

Maintain refrigerated at 2-8°C for up to 2 weeks. For long term storage store at -20°C in small aliquots to prevent freeze-thaw cycles.

**Precautions**

LDB3 Antibody (N-term) is for research use only and not for use in diagnostic or therapeutic procedures.

**LDB3 Antibody (N-term) - Protein Information****Name** LDB3 ([HGNC:15710](#))

**Function** May function as an adapter in striated muscle to couple protein kinase C-mediated signaling via its LIM domains to the cytoskeleton.

**Cellular Location**

Cytoplasm, perinuclear region. Cell projection, pseudopodium. Cytoplasm, cytoskeleton. Cytoplasm, myofibril, sarcomere, Z line. Note=Localized to the cytoplasm around nuclei and pseudopodia of undifferentiated cells and detected throughout the myotubes of differentiated cells. Colocalizes with ACTN2 at the Z-lines

**Tissue Location**

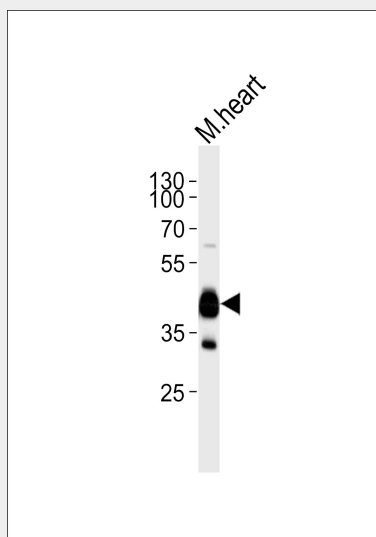
Expressed primarily in skeletal muscle and to a lesser extent in heart. Also detected in brain and placenta

**LDB3 Antibody (N-term) - Protocols**

Provided below are standard protocols that you may find useful for product applications.

- [Western Blot](#)
- [Blocking Peptides](#)
- [Dot Blot](#)
- [Immunohistochemistry](#)
- [Immunofluorescence](#)
- [Immunoprecipitation](#)
- [Flow Cytometry](#)
- [Cell Culture](#)

**LDB3 Antibody (N-term) - Images**



Western blot analysis of lysate from mouse heart tissue lysate, using LDB3 Antibody (N-term)(Cat. #AP20668a). AP20668a was diluted at 1:1000. A goat anti-rabbit IgG H&L(HRP) at 1:5000 dilution was used as the secondary antibody. Lysate at 35ug.

**LDB3 Antibody (N-term) - Background**

May function as an adapter in striated muscle to couple protein kinase C-mediated signaling via its LIM domains to the cytoskeleton.

**LDB3 Antibody (N-term) - References**

Faulkner G.,et al.J. Cell Biol. 146:465-475(1999).  
Zeng G.,et al.Submitted (JAN-2003) to the EMBL/GenBank/DDBJ databases.  
Ishikawa K.,et al.DNA Res. 5:169-176(1998).  
Ota T.,et al.Nat. Genet. 36:40-45(2004).  
Deloukas P.,et al.Nature 429:375-381(2004).