

SPATS2 Antibody (C-term)
Purified Rabbit Polyclonal Antibody (Pab)
Catalog # AP20674c

Specification

SPATS2 Antibody (C-term) - Product Information

Application	WB,E
Primary Accession	Q86XZ4
Reactivity	Human
Host	Rabbit
Clonality	Polyclonal
Isotype	Rabbit IgG
Calculated MW	59545

SPATS2 Antibody (C-term) - Additional Information

Gene ID 65244

Other Names

Spermatogenesis-associated serine-rich protein 2, Serine-rich spermatocytes and round spermatid 59 kDa protein, p59scr, SPATS2, SCR59, SPATA10

Target/Specificity

This SPATS2 antibody is generated from a rabbit immunized with a KLH conjugated synthetic peptide between 448-482 amino acids from the C-terminal region of human SPATS2.

Dilution

WB~~1:1000
E~~Use at an assay dependent concentration.

Format

Purified polyclonal antibody supplied in PBS with 0.09% (W/V) sodium azide. This antibody is purified through a protein A column, followed by peptide affinity purification.

Storage

Maintain refrigerated at 2-8°C for up to 2 weeks. For long term storage store at -20°C in small aliquots to prevent freeze-thaw cycles.

Precautions

SPATS2 Antibody (C-term) is for research use only and not for use in diagnostic or therapeutic procedures.

SPATS2 Antibody (C-term) - Protein Information

Name SPATS2

Synonyms SCR59, SPATA10

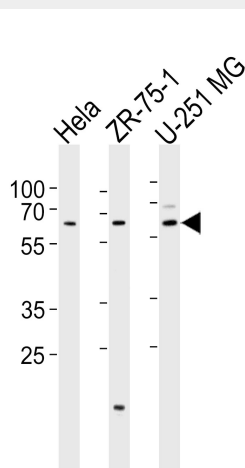
Cellular Location
Cytoplasm.

SPATS2 Antibody (C-term) - Protocols

Provided below are standard protocols that you may find useful for product applications.

- [Western Blot](#)
- [Blocking Peptides](#)
- [Dot Blot](#)
- [Immunohistochemistry](#)
- [Immunofluorescence](#)
- [Immunoprecipitation](#)
- [Flow Cytometry](#)
- [Cell Culture](#)

SPATS2 Antibody (C-term) - Images



Western blot analysis of lysates from HeLa, ZR-75-1, U-251 MG cell line (from left to right), using SPATS2 Antibody (C-term)(Cat. #AP20674c). AP20674c was diluted at 1:1000 at each lane. A goat anti-rabbit IgG H&L(HRP) at 1:5000 dilution was used as the secondary antibody. Lysates at 35ug per lane.

SPATS2 Antibody (C-term) - References

- Ohira M.,et al.Cancer Lett. 197:63-68(2003).
Ota T.,et al.Nat. Genet. 36:40-45(2004).
Mural R.J.,et al.Submitted (JUL-2005) to the EMBL/GenBank/DDBJ databases.
Dephoure N.,et al.Proc. Natl. Acad. Sci. U.S.A. 105:10762-10767(2008).
Mayya V.,et al.Sci. Signal. 2:RA46-RA46(2009).