

Zebrafish fabp10a Antibody (Center)
Purified Rabbit Polyclonal Antibody (Pab)
Catalog # AP20693c**Specification**

Zebrafish fabp10a Antibody (Center) - Product Information

Application	WB,E
Primary Accession	Q9I8L5
Reactivity	Zebrafish
Host	Rabbit
Clonality	Polyclonal
Isotype	Rabbit IgG
Antigen Region	47-80

Zebrafish fabp10a Antibody (Center) - Additional Information**Gene ID** 171481**Other Names**

Fatty acid-binding protein 10-A, liver basic, Zf-FABP10, Zf-Lb-FABP, Fatty acid-binding protein, liver, Liver bile acid-binding protein, L-BABP, z-L-BABP, Liver-type fatty acid-binding protein, L-FABP, Liver-type FABP, fabp10a, fabp10

Target/Specificity

This Zebrafish fabp10a antibody is generated from a rabbit immunized with a KLH conjugated synthetic peptide between 47-80 amino acids of zebrafish fabp10a.

Dilution

WB~~1:1000

E~~Use at an assay dependent concentration.

Format

Purified polyclonal antibody supplied in PBS with 0.09% (W/V) sodium azide. This antibody is purified through a protein A column, followed by peptide affinity purification.

Storage

Maintain refrigerated at 2-8°C for up to 2 weeks. For long term storage store at -20°C in small aliquots to prevent freeze-thaw cycles.

Precautions

Zebrafish fabp10a Antibody (Center) is for research use only and not for use in diagnostic or therapeutic procedures.

Zebrafish fabp10a Antibody (Center) - Protein Information**Name** fabp10a**Synonyms** fabp10

Function Binds hydrophobic ligands, such as cholate, in the cytoplasm. May be involved in intracellular lipid transport (By similarity). Binds one cholate per subunit.

Cellular Location

Cytoplasm.

Tissue Location

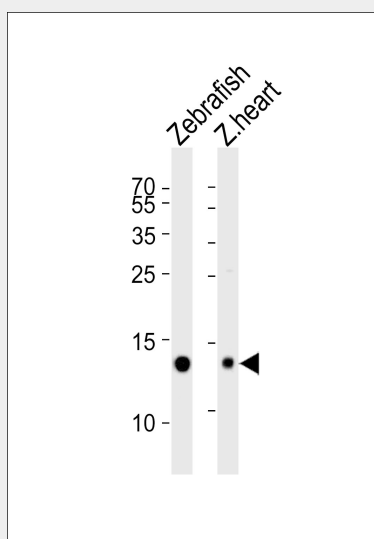
Expressed in the developing embryonic liver from 48 hpf. Also expressed in the liver of 5-day-old larvae. In adults, primarily expressed in the liver, with weak expression in the testis and intestine.

Zebrafish fabp10a Antibody (Center) - Protocols

Provided below are standard protocols that you may find useful for product applications.

- [Western Blot](#)
- [Blocking Peptides](#)
- [Dot Blot](#)
- [Immunohistochemistry](#)
- [Immunofluorescence](#)
- [Immunoprecipitation](#)
- [Flow Cytometry](#)
- [Cell Culture](#)

Zebrafish fabp10a Antibody (Center) - Images



Western blot analysis of lysates from Zebrafish and zebrafish heart tissue lysate (from left to right), using Zebrafish fabp10a Antibody (Center) (Cat. #AP20693c). AP20693c was diluted at 1:1000 at each lane. A goat anti-rabbit IgG H&L (HRP) at 1:5000 dilution was used as the secondary antibody. Lysates at 35ug per lane.

Zebrafish fabp10a Antibody (Center) - Background

Binds hydrophobic ligands, such as cholate, in the cytoplasm. May be involved in intracellular lipid transport (By similarity). Binds one cholate per subunit.

Zebrafish fabp10a Antibody (Center) - References

Denovan-Wright E.M., et al. Biochim. Biophys. Acta 1492:227-232(2000).
Her G.M., et al. Dev. Dyn. 227:347-356(2003).
Her G.M., et al. FEBS Lett. 538:125-133(2003).
Sharma M.K., et al. FEBS J. 273:3216-3229(2006).
Capaldi S., et al. J. Biol. Chem. 282:31008-31018(2007).