

Zebrafish Icp1 Antibody (N-term)
Purified Rabbit Polyclonal Antibody (Pab)
Catalog # AP20708a**Specification**

Zebrafish Icp1 Antibody (N-term) - Product Information

Application	WB,E
Primary Accession	Q6P698
Reactivity	Zebrafish
Host	Rabbit
Clonality	Polyclonal
Isotype	Rabbit IgG
Antigen Region	138-172

Zebrafish Icp1 Antibody (N-term) - Additional Information**Other Names**

Plastin-2, L-plastin, Lymphocyte cytosolic plastin 1, Icp1 {ECO:0000312|EMBL:AAH623811}, pls2

Target/Specificity

This Zebrafish Icp1 antibody is generated from a rabbit immunized with a KLH conjugated synthetic peptide between 138-172 amino acids from the N-terminal region of zebrafish Icp1.

Dilution

WB~~1:1000

E~~Use at an assay dependent concentration.

Format

Purified polyclonal antibody supplied in PBS with 0.09% (W/V) sodium azide. This antibody is purified through a protein A column, followed by peptide affinity purification.

Storage

Maintain refrigerated at 2-8°C for up to 2 weeks. For long term storage store at -20°C in small aliquots to prevent freeze-thaw cycles.

Precautions

Zebrafish Icp1 Antibody (N-term) is for research use only and not for use in diagnostic or therapeutic procedures.

Zebrafish Icp1 Antibody (N-term) - Protein Information

Name Icp1 {ECO:0000312|EMBL:AAH62381.1}

Synonyms pls2

Function Actin-binding protein. Plays a role in the activation of T- cells (By similarity).

Cellular Location

Cytoplasm, cytoskeleton {ECO:0000250|UniProtKB:P13796}. Cell junction {ECO:0000250|UniProtKB:P13796}. Cell projection {ECO:0000250|UniProtKB:P13796}. Cell projection, ruffle membrane {ECO:0000250|UniProtKB:P13796, ECO:0000250|UniProtKB:Q61233}; Peripheral membrane protein {ECO:0000250|UniProtKB:Q61233}; Cytoplasmic side {ECO:0000250|UniProtKB:Q61233}

Tissue Location

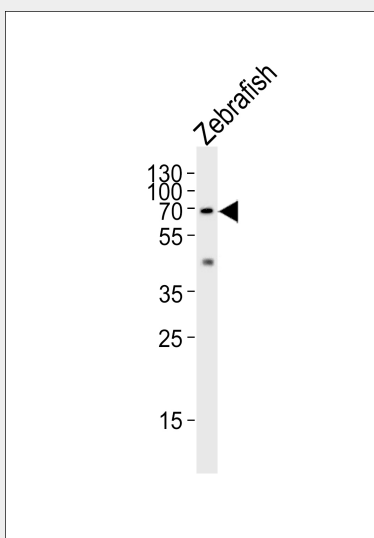
Expressed by macrophages (at protein level).

Zebrafish Icp1 Antibody (N-term) - Protocols

Provided below are standard protocols that you may find useful for product applications.

- [Western Blot](#)
- [Blocking Peptides](#)
- [Dot Blot](#)
- [Immunohistochemistry](#)
- [Immunofluorescence](#)
- [Immunoprecipitation](#)
- [Flow Cytometry](#)
- [Cell Culture](#)

Zebrafish Icp1 Antibody (N-term) - Images



Western blot analysis of lysate from zebrafish tissue lysate, using Zebrafish Icp1 Antibody (N-term) (Cat. #AP20708a). AP20708a was diluted at 1:1000. A goat anti-rabbit IgG H&L (HRP) at 1:5000 dilution was used as the secondary antibody. Lysate at 35ug.

Zebrafish Icp1 Antibody (N-term) - Background

Actin-binding protein. Plays a role in the activation of T-cells (By similarity).

Zebrafish Icp1 Antibody (N-term) - References

Herbomel P., et al. Development 126:3735-3745(1999).