

**HUMAN-CTNND1\_isform 2ABC(Y174) Antibody**  
**Purified Rabbit Polyclonal Antibody (Pab)**  
**Catalog # AP20722b****Specification**

---

**HUMAN-CTNND1\_isform 2ABC(Y174) Antibody - Product Information**

Application	WB,E
Primary Accession	<a href="#">O60716</a>
Reactivity	Human
Host	Rabbit
Clonality	Polyclonal
Isotype	Rabbit IgG

**HUMAN-CTNND1\_isform 2ABC(Y174) Antibody - Additional Information****Gene ID** 1500**Other Names**

Catenin delta-1, Cadherin-associated Src substrate, CAS, p120 catenin, p120(ctn), p120(cas), CTNND1, KIAA0384

**Target/Specificity**

This antibody is generated from a rabbit immunized with a KLH conjugated synthetic peptide between 160-200 amino acids from human.

**Dilution**

WB~~1:16000

E~~Use at an assay dependent concentration.

**Format**

Purified polyclonal antibody supplied in PBS with 0.09% (W/V) sodium azide. This antibody is purified through a protein A column, followed by peptide affinity purification.

**Storage**

Maintain refrigerated at 2-8°C for up to 2 weeks. For long term storage store at -20°C in small aliquots to prevent freeze-thaw cycles.

**Precautions**

HUMAN-CTNND1\_isform 2ABC(Y174) Antibody is for research use only and not for use in diagnostic or therapeutic procedures.

**HUMAN-CTNND1\_isform 2ABC(Y174) Antibody - Protein Information****Name** CTNND1 ([HGNC:2515](#))**Synonyms** KIAA0384**Function** Key regulator of cell-cell adhesion that associates with and regulates the cell adhesion

properties of both C-, E- and N-cadherins, being critical for their surface stability (PubMed:[14610055](#), PubMed:[20371349](#)). Promotes localization and retention of DSG3 at cell-cell junctions, via its interaction with DSG3 (PubMed:[18343367](#)). Beside cell-cell adhesion, regulates gene transcription through several transcription factors including ZBTB33/Kaiso2 and GLIS2, and the activity of Rho family GTPases and downstream cytoskeletal dynamics (PubMed:[10207085](#), PubMed:[20371349](#)). Implicated both in cell transformation by SRC and in ligand-induced receptor signaling through the EGF, PDGF, CSF-1 and ERBB2 receptors (PubMed:[17344476](#)).

#### Cellular Location

Cell junction, adherens junction. Cytoplasm. Nucleus. Cell membrane. Cell junction.  
Note=Interaction with GLIS2 promotes nuclear translocation (By similarity). Detected at cell-cell contacts (PubMed:15240885, PubMed:17047063). NANOS1 induces its translocation from sites of cell-cell contact to the cytoplasm (PubMed:17047063). CDH1 enhances cell membrane localization (PubMed:15240885). Localizes to cell-cell contacts as keratinocyte differentiation progresses (By similarity) {ECO:0000250|UniProtKB:P30999, ECO:0000269|PubMed:11896187, ECO:0000269|PubMed:15240885, ECO:0000269|PubMed:17047063} [Isoform 2A]: Nucleus [Isoform 4A]: Cytoplasm

#### Tissue Location

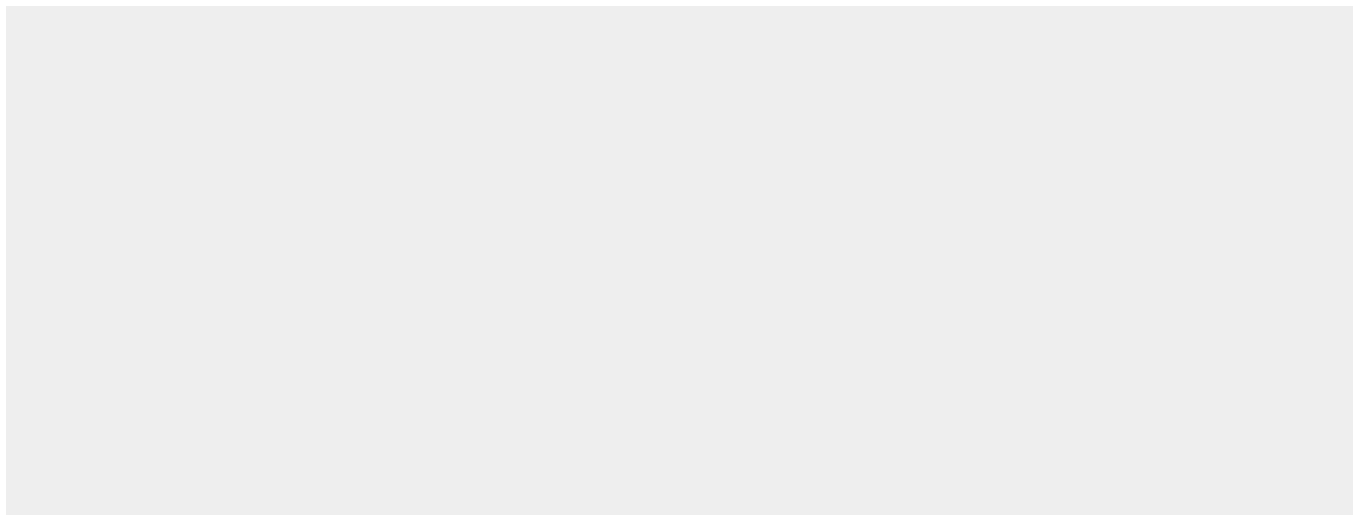
Expressed in vascular endothelium. Melanocytes and melanoma cells primarily express the long isoform 1A, whereas keratinocytes express shorter isoforms, especially 3A. The shortest isoform 4A, is detected in normal keratinocytes and melanocytes, and generally lost from cells derived from squamous cell carcinomas or melanomas. The C-terminal alternatively spliced exon B is present in the p120ctn transcripts in the colon, intestine and prostate, but lost in several tumor tissues derived from these organs

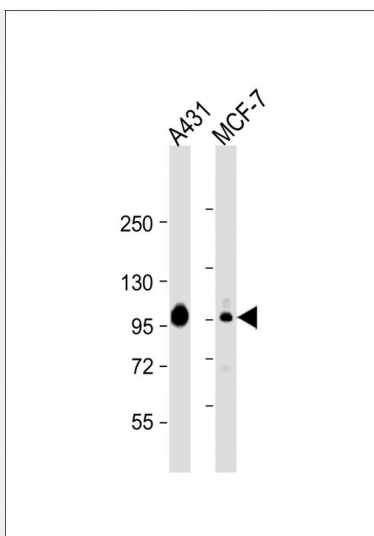
### HUMAN-CTNND1\_isform 2ABC(Y174) Antibody - Protocols

Provided below are standard protocols that you may find useful for product applications.

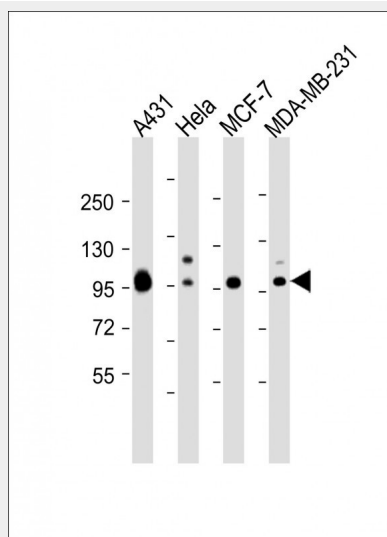
- [Western Blot](#)
- [Blocking Peptides](#)
- [Dot Blot](#)
- [Immunohistochemistry](#)
- [Immunofluorescence](#)
- [Immunoprecipitation](#)
- [Flow Cytometry](#)
- [Cell Culture](#)

### HUMAN-CTNND1\_isform 2ABC(Y174) Antibody - Images





All lanes : Anti-HUMAN-CTNND1\_isform 2ABC(Y174) Antibody at 1:2000 dilution Lane 1: A431 whole cell lysate Lane 2: MCF-7 whole cell lysate Lysates/proteins at 20 µg per lane. Secondary Goat Anti-Rabbit IgG, (H+L), Peroxidase conjugated at 1/10000 dilution. Predicted band size : 108 kDa Blocking/Dilution buffer: 5% NFDM/TBST.



All lanes : Anti-HUMAN-CTNND1\_isform 2ABC(Y174) Antibody at 1:16000 dilution Lane 1: A431 whole cell lysate Lane 2: HeLa whole cell lysate Lane 3: MCF-7 whole cell lysate Lane 4: MDA-MB-231 whole cell lysate Lysates/proteins at 20 µg per lane. Secondary Goat Anti-Rabbit IgG, (H+L), Peroxidase conjugated at 1/10000 dilution. Predicted band size : 108 kDa Blocking/Dilution buffer: 5% NFDM/TBST.

#### **HUMAN-CTNND1\_isform 2ABC(Y174) Antibody - Background**

Binds to and inhibits the transcriptional repressor ZBTB33, which may lead to activation of target genes of the Wnt signaling pathway (By similarity). Associates with and regulates the cell adhesion properties of both C-, E- and N-cadherins, being critical for their surface stability. Implicated both in cell transformation by SRC and in ligand-induced receptor signaling through the EGF, PDGF, CSF-1 and ERBB2 receptors. Promotes GLIS2 C-terminal cleavage.

#### **HUMAN-CTNND1\_isform 2ABC(Y174) Antibody - References**

Keirsebilck A.,et al.Genomics 50:129-146(1998).

Nagase T.,et al.DNA Res. 4:141-150(1997).  
Ota T.,et al.Nat. Genet. 36:40-45(2004).  
Taylor T.D.,et al.Nature 440:497-500(2006).  
Kim L.,et al.Mol. Cell. Biol. 15:4553-4561(1995).