

**GAB1 (Y259) Antibody**  
**Purified Rabbit Polyclonal Antibody (Pab)**  
**Catalog # AP20723b****Specification**

---

**GAB1 (Y259) Antibody - Product Information**

Application	WB,E
Primary Accession	<a href="#">Q13480</a>
Reactivity	Human
Host	Rabbit
Clonality	Polyclonal
Isotype	Rabbit IgG

**GAB1 (Y259) Antibody - Additional Information****Gene ID** 2549**Other Names**

GRB2-associated-binding protein 1, GRB2-associated binder 1, Growth factor receptor bound protein 2-associated protein 1, GAB1

**Target/Specificity**

This antibody is generated from a rabbit immunized with a KLH conjugated synthetic peptide between 250-285 amino acids from human GAB1.

**Dilution**

WB~~1:1000

E~~Use at an assay dependent concentration.

**Format**

Purified polyclonal antibody supplied in PBS with 0.09% (W/V) sodium azide. This antibody is purified through a protein A column, followed by peptide affinity purification.

**Storage**

Maintain refrigerated at 2-8°C for up to 2 weeks. For long term storage store at -20°C in small aliquots to prevent freeze-thaw cycles.

**Precautions**

GAB1 (Y259) Antibody is for research use only and not for use in diagnostic or therapeutic procedures.

**GAB1 (Y259) Antibody - Protein Information****Name** GAB1

**Function** Adapter protein that plays a role in intracellular signaling cascades triggered by activated receptor-type kinases. Plays a role in FGFR1 signaling. Probably involved in signaling by the epidermal growth factor receptor (EGFR) and the insulin receptor (INSR). Involved in the

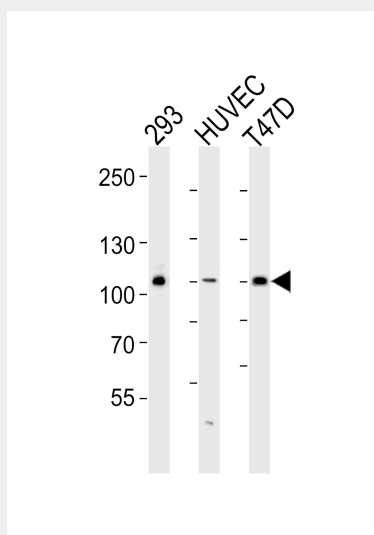
MET/HGF-signaling pathway (PubMed:[29408807](#)).

### **GAB1 (Y259) Antibody - Protocols**

Provided below are standard protocols that you may find useful for product applications.

- [Western Blot](#)
- [Blocking Peptides](#)
- [Dot Blot](#)
- [Immunohistochemistry](#)
- [Immunofluorescence](#)
- [Immunoprecipitation](#)
- [Flow Cytometry](#)
- [Cell Culture](#)

### **GAB1 (Y259) Antibody - Images**



Western blot analysis of lysates from 293, HUVEC, T47D cell line (from left to right), using GAB1 (Y259) (Cat. #AP20723b). AP20723b was diluted at 1:1000 at each lane. A goat anti-rabbit IgG H&L(HRP) at 1:5000 dilution was used as the secondary antibody. Lysates at 35ug per lane.

### **GAB1 (Y259) Antibody - Background**

Adapter protein that plays a role in intracellular signaling cascades triggered by activated receptor-type kinases. Plays a role in FGFR1 signaling. Probably involved in signaling by the epidermal growth factor receptor (EGFR) and the insulin receptor (INSR).

### **GAB1 (Y259) Antibody - References**

Holgado-Madruga M.,et al.Nature 379:560-564(1996).  
Ota T.,et al.Nat. Genet. 36:40-45(2004).  
Hillier L.W.,et al.Nature 434:724-731(2005).  
Mural R.J.,et al.Submitted (SEP-2005) to the EMBL/GenBank/DDBJ databases.  
Brdicka T.,et al.J. Exp. Med. 196:1617-1626(2002).