

GSN Antibody (N-term)
Purified Rabbit Polyclonal Antibody (Pab)
Catalog # AP20726a**Specification**

GSN Antibody (N-term) - Product Information

Application	WB,E
Primary Accession	P06396
Reactivity	Human
Host	Rabbit
Clonality	Polyclonal
Isotype	Rabbit IgG
Calculated MW	85698

GSN Antibody (N-term) - Additional Information**Gene ID** 2934**Other Names**

Gelsolin, AGEL, Actin-depolymerizing factor, ADF, Brevin, GSN

Target/Specificity

This GSN antibody is generated from a rabbit immunized with a KLH conjugated synthetic peptide between 36-70 amino acids from the N-terminal region of human GSN.

Dilution

WB~~1:1000

E~~Use at an assay dependent concentration.

Format

Purified polyclonal antibody supplied in PBS with 0.09% (W/V) sodium azide. This antibody is purified through a protein A column, followed by peptide affinity purification.

Storage

Maintain refrigerated at 2-8°C for up to 2 weeks. For long term storage store at -20°C in small aliquots to prevent freeze-thaw cycles.

Precautions

GSN Antibody (N-term) is for research use only and not for use in diagnostic or therapeutic procedures.

GSN Antibody (N-term) - Protein Information**Name** GSN

Function Calcium-regulated, actin-modulating protein that binds to the plus (or barbed) ends of actin monomers or filaments, preventing monomer exchange (end-blocking or capping). It can promote the assembly of monomers into filaments (nucleation) as well as sever filaments already

formed (PubMed:[19666512](#)). Plays a role in ciliogenesis (PubMed:[20393563](#)).

Cellular Location

[Isoform 2]: Cytoplasm, cytoskeleton.

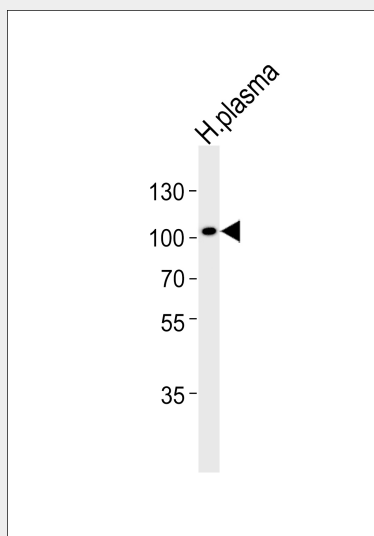
Tissue Location

Phagocytic cells, platelets, fibroblasts, nonmuscle cells, smooth and skeletal muscle cells

GSN Antibody (N-term) - Protocols

Provided below are standard protocols that you may find useful for product applications.

- [Western Blot](#)
- [Blocking Peptides](#)
- [Dot Blot](#)
- [Immunohistochemistry](#)
- [Immunofluorescence](#)
- [Immunoprecipitation](#)
- [Flow Cytometry](#)
- [Cell Culture](#)

GSN Antibody (N-term) - Images

Western blot analysis of lysate from human plasma tissue lysate, using GSN Antibody (N-term)(Cat. #AP20726a). AP20726a was diluted at 1:1000. A goat anti-rabbit IgG H&L(HRP) at 1:5000 dilution was used as the secondary antibody. Lysate at 35ug.

GSN Antibody (N-term) - Background

Calcium-regulated, actin-modulating protein that binds to the plus (or barbed) ends of actin monomers or filaments, preventing monomer exchange (end-blocking or capping). It can promote the assembly of monomers into filaments (nucleation) as well as sever filaments already formed. Plays a role in ciliogenesis.

GSN Antibody (N-term) - References

Kwiatkowski D.J., et al. Nature 323:455-458(1986).

Ota T.,et al.Nat. Genet. 36:40-45(2004).

Humphray S.J.,et al.Nature 429:369-374(2004).

Mural R.J.,et al.Submitted (JUL-2005) to the EMBL/GenBank/DDBJ databases.

Gevaert K.,et al.Nat. Biotechnol. 21:566-569(2003).