

CHCHD3 Antibody (Center)
Purified Rabbit Polyclonal Antibody (Pab)
Catalog # AP20731c**Specification**

CHCHD3 Antibody (Center) - Product Information

Application	WB,E
Primary Accession	Q9NX63
Reactivity	Human
Host	Rabbit
Clonality	Polyclonal
Isotype	Rabbit IgG
Calculated MW	26152

CHCHD3 Antibody (Center) - Additional Information**Gene ID** 54927**Other Names**

MICOS complex subunit MIC19, Coiled-coil-helix-coiled-coil-helix domain-containing protein 3, CHCHD3, MIC19, MINOS3

Target/Specificity

This CHCHD3 antibody is generated from a rabbit immunized with a KLH conjugated synthetic peptide between 83-116 amino acids from the Central region of human CHCHD3.

Dilution

WB~~1:1000

E~~Use at an assay dependent concentration.

Format

Purified polyclonal antibody supplied in PBS with 0.09% (W/V) sodium azide. This antibody is purified through a protein A column, followed by peptide affinity purification.

Storage

Maintain refrigerated at 2-8°C for up to 2 weeks. For long term storage store at -20°C in small aliquots to prevent freeze-thaw cycles.

Precautions

CHCHD3 Antibody (Center) is for research use only and not for use in diagnostic or therapeutic procedures.

CHCHD3 Antibody (Center) - Protein Information**Name** CHCHD3**Synonyms** MIC19, MINOS3

Function Component of the MICOS complex, a large protein complex of the mitochondrial inner membrane that plays crucial roles in the maintenance of crista junctions, inner membrane architecture, and formation of contact sites to the outer membrane (PubMed:[25781180](#), PubMed:[32567732](#), PubMed:[33130824](#)). Plays an important role in the maintenance of the MICOS complex stability and the mitochondrial cristae morphology (PubMed:[25781180](#), PubMed:[32567732](#), PubMed:[33130824](#)). Has also been shown to function as a transcription factor which binds to the BAG1 promoter and represses BAG1 transcription (PubMed:[22567091](#)).

Cellular Location

Mitochondrion inner membrane {ECO:0000250|UniProtKB:Q9CRB9}; Lipid-anchor; Intermembrane side {ECO:0000250|UniProtKB:Q9CRB9}. Cytoplasm. Nucleus Mitochondrion

Tissue Location

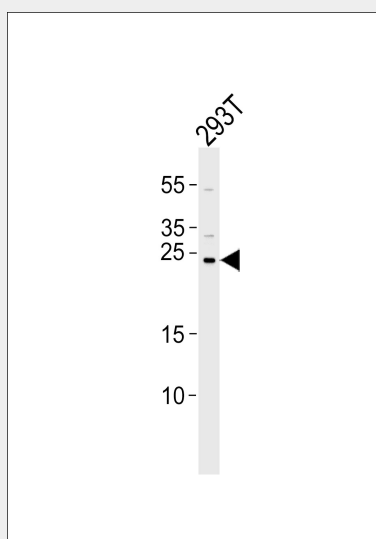
Detected at low levels in brain, placenta, lung, liver, kidney and pancreas with increased levels in heart and skeletal muscle. Higher expression in primary lung cancers than in normal lung tissue.

CHCHD3 Antibody (Center) - Protocols

Provided below are standard protocols that you may find useful for product applications.

- [Western Blot](#)
- [Blocking Peptides](#)
- [Dot Blot](#)
- [Immunohistochemistry](#)
- [Immunofluorescence](#)
- [Immunoprecipitation](#)
- [Flow Cytometry](#)
- [Cell Culture](#)

CHCHD3 Antibody (Center) - Images



Western blot analysis of lysate from 293T cell line, using CHCHD3 Antibody (Center)(Cat. #AP20731c). AP20731c was diluted at 1:1000. A goat anti-rabbit IgG H&L(HRP) at 1:5000 dilution was used as the secondary antibody. Lysate at 35ug.

CHCHD3 Antibody (Center) - Background

Required for maintenance of mitochondrial crista integrity and mitochondrial function. May act as a scaffolding protein that stabilizes protein complexes involved in crista architecture and protein import. Has also been shown to function as a transcription factor which binds to the BAG1 promoter and represses BAG1 transcription.

CHCHD3 Antibody (Center) - References

Ota T.,et al.Nat. Genet. 36:40-45(2004).
Daub H.,et al.Mol. Cell 31:438-448(2008).
Dephoure N.,et al.Proc. Natl. Acad. Sci. U.S.A. 105:10762-10767(2008).
Mayya V.,et al.Sci. Signal. 2:RA46-RA46(2009).
Choudhary C.,et al.Science 325:834-840(2009).