

CTDSP1 Antibody (N-term)
Purified Rabbit Polyclonal Antibody (Pab)
Catalog # AP20752a**Specification**

CTDSP1 Antibody (N-term) - Product Information

Application	WB,E
Primary Accession	O9GZU7
Reactivity	Human, Mouse
Host	Rabbit
Clonality	Polyclonal
Isotype	Rabbit IgG
Calculated MW	29203

CTDSP1 Antibody (N-term) - Additional Information**Gene ID** 58190**Other Names**

Carboxy-terminal domain RNA polymerase II polypeptide A small phosphatase 1, Nuclear LIM interactor-interacting factor 3, NLI-IF, NLI-interacting factor 3, Small C-terminal domain phosphatase 1, SCP1, Small CTD phosphatase 1, CTDSP1, NIF3, NLIIF, SCP1

Target/Specificity

This CTDSP1 antibody is generated from a rabbit immunized with a KLH conjugated synthetic peptide between 16-50 amino acids from the N-terminal region of human CTDSP1.

Dilution

WB~~1:1000

E~~Use at an assay dependent concentration.

Format

Purified polyclonal antibody supplied in PBS with 0.09% (W/V) sodium azide. This antibody is purified through a protein A column, followed by peptide affinity purification.

Storage

Maintain refrigerated at 2-8°C for up to 2 weeks. For long term storage store at -20°C in small aliquots to prevent freeze-thaw cycles.

Precautions

CTDSP1 Antibody (N-term) is for research use only and not for use in diagnostic or therapeutic procedures.

CTDSP1 Antibody (N-term) - Protein Information**Name** CTDSP1**Synonyms** NIF3, NLIIF, SCP1

Function Preferentially catalyzes the dephosphorylation of 'Ser-5' within the tandem 7 residue repeats in the C-terminal domain (CTD) of the largest RNA polymerase II subunit POLR2A. Negatively regulates RNA polymerase II transcription, possibly by controlling the transition from initiation/capping to processive transcript elongation. Recruited by REST to neuronal genes that contain RE-1 elements, leading to neuronal gene silencing in non-neuronal cells.

Cellular Location

Nucleus. Note=Colocalizes with RNA polymerase II

Tissue Location

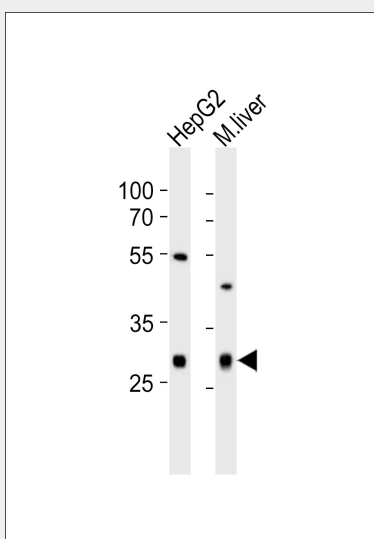
Expression is restricted to non-neuronal tissues. Highest expression in skeletal muscle, spleen, lung and placenta

CTDSP1 Antibody (N-term) - Protocols

Provided below are standard protocols that you may find useful for product applications.

- [Western Blot](#)
- [Blocking Peptides](#)
- [Dot Blot](#)
- [Immunohistochemistry](#)
- [Immunofluorescence](#)
- [Immunoprecipitation](#)
- [Flow Cytometry](#)
- [Cell Culture](#)

CTDSP1 Antibody (N-term) - Images



Western blot analysis of lysates from HepG2 cell line, mouse liver tissue lysate (from left to right), using CTDSP1 Antibody (N-term)(Cat. #AP20752a). AP20752a was diluted at 1:1000 at each lane. A goat anti-rabbit IgG H&L(HRP) at 1:10000 dilution was used as the secondary antibody. Lysates at 20ug per lane.

CTDSP1 Antibody (N-term) - Background

Preferentially catalyzes the dephosphorylation of 'Ser- 5' within the tandem 7 residues repeats in the C-terminal domain (CTD) of the largest RNA polymerase II subunit POLR2A. Negatively regulates

RNA polymerase II transcription, possibly by controlling the transition from initiation/capping to processive transcript elongation. Recruited by REST to neuronal genes that contain RE-1 elements, leading to neuronal gene silencing in non-neuronal cells.

CTDSP1 Antibody (N-term) - References

Marquet S.,et al.Mamm. Genome 11:755-762(2000).
Yeo M.,et al.J. Biol. Chem. 278:26078-26085(2003).
Li W.B.,et al.Submitted (APR-2003) to the EMBL/GenBank/DDBJ databases.
Hillier L.W.,et al.Nature 434:724-731(2005).
Yeo M.,et al.Science 307:596-600(2005).