

**GLRX5 Antibody (Center)**  
**Purified Rabbit Polyclonal Antibody (Pab)**  
**Catalog # AP20754c****Specification**

---

**GLRX5 Antibody (Center) - Product Information**

Application	WB,E
Primary Accession	<a href="#">Q86SX6</a>
Other Accession	<a href="#">Q80Y14</a>
Reactivity	Human
Predicted	Mouse
Host	Rabbit
Clonality	Polyclonal
Isotype	Rabbit IgG
Calculated MW	16628

**GLRX5 Antibody (Center) - Additional Information****Gene ID** 51218**Other Names**

Glutaredoxin-related protein 5, mitochondrial, Monothiol glutaredoxin-5, GLRX5, C14orf87

**Target/Specificity**

This GLRX5 antibody is generated from a rabbit immunized with a KLH conjugated synthetic peptide between 93-127 amino acids from the Central region of human GLRX5.

**Dilution**

WB~~1:1000

E~~Use at an assay dependent concentration.

**Format**

Purified polyclonal antibody supplied in PBS with 0.09% (W/V) sodium azide. This antibody is purified through a protein A column, followed by peptide affinity purification.

**Storage**

Maintain refrigerated at 2-8°C for up to 2 weeks. For long term storage store at -20°C in small aliquots to prevent freeze-thaw cycles.

**Precautions**

GLRX5 Antibody (Center) is for research use only and not for use in diagnostic or therapeutic procedures.

**GLRX5 Antibody (Center) - Protein Information****Name** GLRX5**Synonyms** C14orf87

**Function** Monothiol glutaredoxin involved in mitochondrial iron-sulfur (Fe/S) cluster transfer (PubMed:[20364084](#), PubMed:[23615440](#)). Receives 2Fe/2S clusters from scaffold protein ISCU and mediates their transfer to apoproteins, to the 4Fe/FS cluster biosynthesis machinery, or export from mitochondrion (PubMed:[20364084](#), PubMed:[23615440](#), PubMed:[24334290](#)). Required for normal regulation of hemoglobin synthesis by the iron- sulfur protein ACO1 (PubMed:[20364084](#)).

**Cellular Location**

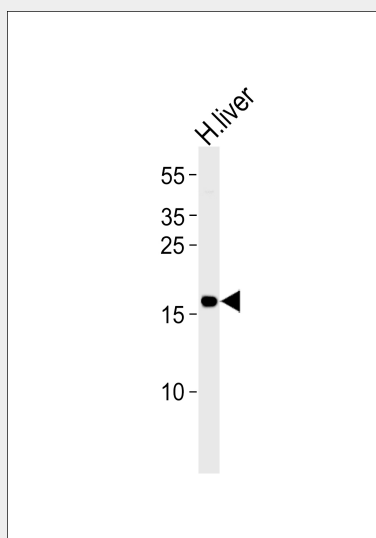
Mitochondrion matrix

**GLRX5 Antibody (Center) - Protocols**

Provided below are standard protocols that you may find useful for product applications.

- [Western Blot](#)
- [Blocking Peptides](#)
- [Dot Blot](#)
- [Immunohistochemistry](#)
- [Immunofluorescence](#)
- [Immunoprecipitation](#)
- [Flow Cytometry](#)
- [Cell Culture](#)

**GLRX5 Antibody (Center) - Images**



Western blot analysis of lysate from human liver tissue lysate, using GLRX5 Antibody (Center)(Cat. #AP20754c). AP20754c was diluted at 1:1000. A goat anti-rabbit IgG H&L(HRP) at 1:5000 dilution was used as the secondary antibody. Lysate at 35ug.

**GLRX5 Antibody (Center) - Background**

Monothiol glutaredoxin involved in the biogenesis of iron-sulfur clusters. Required for normal iron homeostasis. Required for normal regulation of hemoglobin synthesis by the iron-sulfur protein ACO1.

**GLRX5 Antibody (Center) - References**

Wingert R.A.,et al.Nature 436:1035-1039(2005).

Wingert R.A.,et al.Nature 437:920-920(2005).

Kurosawa N.,et al.Submitted (JUL-2005) to the EMBL/GenBank/DDBJ databases.

Li W.B.,et al.Submitted (FEB-2003) to the EMBL/GenBank/DDBJ databases.

Mural R.J.,et al.Submitted (JUL-2005) to the EMBL/GenBank/DDBJ databases.