

PHB Antibody (N-term)
Purified Rabbit Polyclonal Antibody (Pab)
Catalog # AP20757a

Specification

PHB Antibody (N-term) - Product Information

Application	WB,E
Primary Accession	P35232
Other Accession	P67779 , P67778 , Q3T165 , P24156
Reactivity	Human
Predicted	Bovine, Drosophila, Mouse, Rat
Host	Rabbit
Clonality	Polyclonal
Isotype	Rabbit IgG
Calculated MW	29804

PHB Antibody (N-term) - Additional Information

Gene ID 5245

Other Names

Prohibitin, PHB

Target/Specificity

This PHB antibody is generated from a rabbit immunized with a KLH conjugated synthetic peptide between 73-107 amino acids from the N-terminal region of human PHB.

Dilution

WB~~1:1000

E~~Use at an assay dependent concentration.

Format

Purified polyclonal antibody supplied in PBS with 0.09% (W/V) sodium azide. This antibody is purified through a protein A column, followed by peptide affinity purification.

Storage

Maintain refrigerated at 2-8°C for up to 2 weeks. For long term storage store at -20°C in small aliquots to prevent freeze-thaw cycles.

Precautions

PHB Antibody (N-term) is for research use only and not for use in diagnostic or therapeutic procedures.

PHB Antibody (N-term) - Protein Information

Name PHB1 {ECO:0000303|PubMed:28017329, ECO:0000312|HGNC:HGNC:8912}

Function Protein with pleiotropic attributes mediated in a cell- compartment- and tissue-specific

manner, which include the plasma membrane-associated cell signaling functions, mitochondrial chaperone, and transcriptional co-regulator of transcription factors in the nucleus (PubMed:[11302691](#), PubMed:[20959514](#), PubMed:[28017329](#), PubMed:[31522117](#)). Plays a role in adipose tissue and glucose homeostasis in a sex-specific manner (By similarity). Contributes to pulmonary vascular remodeling by accelerating proliferation of pulmonary arterial smooth muscle cells (By similarity).

Cellular Location

Mitochondrion inner membrane. Nucleus. Cytoplasm. Cell membrane

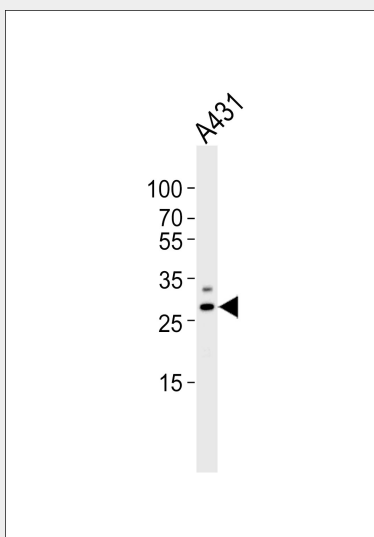
Tissue Location

Widely expressed in different tissues.

PHB Antibody (N-term) - Protocols

Provided below are standard protocols that you may find useful for product applications.

- [Western Blot](#)
- [Blocking Peptides](#)
- [Dot Blot](#)
- [Immunohistochemistry](#)
- [Immunofluorescence](#)
- [Immunoprecipitation](#)
- [Flow Cytometry](#)
- [Cell Culture](#)

PHB Antibody (N-term) - Images

Western blot analysis of lysate from A431 cell line, using PHB Antibody (N-term)(Cat. #AP20757a). AP20757a was diluted at 1:1000. A goat anti-rabbit IgG H&L(HRP) at 1:5000 dilution was used as the secondary antibody. Lysate at 35ug.

PHB Antibody (N-term) - Background

Prohibitin inhibits DNA synthesis. It has a role in regulating proliferation. As yet it is unclear if the protein or the mRNA exhibits this effect. May play a role in regulating mitochondrial respiration activity and in aging.

PHB Antibody (N-term) - References

Sato T.,et al.Cancer Res. 52:1643-1646(1992).

Sato T.,et al.Genomics 17:762-764(1993).

Kalnine N.,et al.Submitted (MAY-2003) to the EMBL/GenBank/DDBJ databases.

Bienvenut W.V.,et al.Submitted (MAR-2005) to UniProtKB.

Lubec G.,et al.Submitted (DEC-2008) to UniProtKB.