

STPG1 Antibody (C-term)
Purified Rabbit Polyclonal Antibody (Pab)
Catalog # AP20759c**Specification**

STPG1 Antibody (C-term) - Product Information

Application	WB,E
Primary Accession	Q5TH74
Reactivity	Human
Host	Rabbit
Clonality	Polyclonal
Isotype	Rabbit IgG

STPG1 Antibody (C-term) - Additional Information**Gene ID** 90529**Other Names**

O(6)-methylguanine-induced apoptosis 2, MAPO2, Sperm-tail PG-rich repeat-containing protein 1, STPG1, C1orf201

Target/Specificity

This C1orf201 antibody is generated from a rabbit immunized with a KLH conjugated synthetic peptide between 238-272 amino acids from the C-terminal region of human C1orf201.

Dilution

WB~~1:1000

E~~Use at an assay dependent concentration.

Format

Purified polyclonal antibody supplied in PBS with 0.09% (W/V) sodium azide. This antibody is purified through a protein A column, followed by peptide affinity purification.

Storage

Maintain refrigerated at 2-8°C for up to 2 weeks. For long term storage store at -20°C in small aliquots to prevent freeze-thaw cycles.

Precautions

STPG1 Antibody (C-term) is for research use only and not for use in diagnostic or therapeutic procedures.

STPG1 Antibody (C-term) - Protein Information**Name** STPG1**Synonyms** C1orf201**Function** May positively contribute to the induction of apoptosis triggered by O(6)-methylguanine.

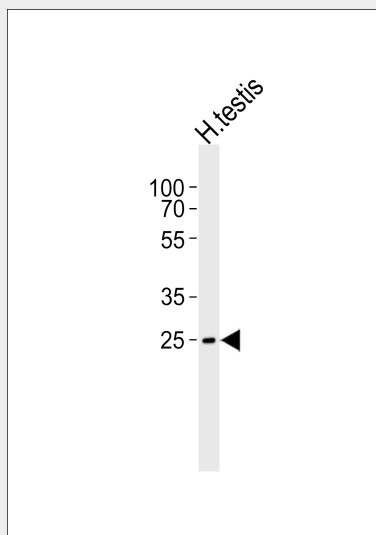
Cellular Location

Cytoplasm. Nucleus.

STPG1 Antibody (C-term) - Protocols

Provided below are standard protocols that you may find useful for product applications.

- [Western Blot](#)
- [Blocking Peptides](#)
- [Dot Blot](#)
- [Immunohistochemistry](#)
- [Immunofluorescence](#)
- [Immunoprecipitation](#)
- [Flow Cytometry](#)
- [Cell Culture](#)

STPG1 Antibody (C-term) - Images

Western blot analysis of lysate from human testis tissue lysate, using C1orf201 Antibody (C-term)(Cat. #AP20759c). AP20759c was diluted at 1:1000. A goat anti-rabbit IgG H&L(HRP) at 1:5000 dilution was used as the secondary antibody. Lysate at 35ug.

STPG1 Antibody (C-term) - Background

May positively contribute to the induction of apoptosis triggered by O(6)-methylguanine.

STPG1 Antibody (C-term) - References

Gregory S.G.,et al.Nature 441:315-321(2006).
Mayya V.,et al.Sci. Signal. 2:RA46-RA46(2009).
Fujikane R.,et al.PLoS ONE 7:E44817-E44817(2012).
Sjoebloom T.,et al.Science 314:268-274(2006).