

**Mouse T Antibody (C-term)**  
**Purified Rabbit Polyclonal Antibody (Pab)**  
**Catalog # AP20762c****Specification**

---

**Mouse T Antibody (C-term) - Product Information**

Application	WB,E
Primary Accession	<a href="#">P20293</a>
Reactivity	Mouse
Predicted	Rat
Host	Rabbit
Clonality	Polyclonal
Isotype	Rabbit IgG

**Mouse T Antibody (C-term) - Additional Information****Gene ID** 20997**Other Names**

Brachyury protein, Protein T, T

**Target/Specificity**

This Mouse T antibody is generated from a rabbit immunized with a KLH conjugated synthetic peptide between 408-442 amino acids from the C-terminal region of Mouse T.

**Dilution**

WB~~1:1000

E~~Use at an assay dependent concentration.

**Format**

Purified polyclonal antibody supplied in PBS with 0.09% (W/V) sodium azide. This antibody is purified through a protein A column, followed by peptide affinity purification.

**Storage**

Maintain refrigerated at 2-8°C for up to 2 weeks. For long term storage store at -20°C in small aliquots to prevent freeze-thaw cycles.

**Precautions**

Mouse T Antibody (C-term) is for research use only and not for use in diagnostic or therapeutic procedures.

**Mouse T Antibody (C-term) - Protein Information****Name** Tbxt {ECO:0000250|UniProtKB:O15178}

**Function** Involved in the transcriptional regulation of genes required for mesoderm formation and differentiation (PubMed:[7588606](#)). Binds to a palindromic T site 5'-TTCACACCTAGGTGTGAA-3' DNA sequence and activates gene transcription when bound to such a site (PubMed:[7588606](#)).

PubMed:[8344258](#)).

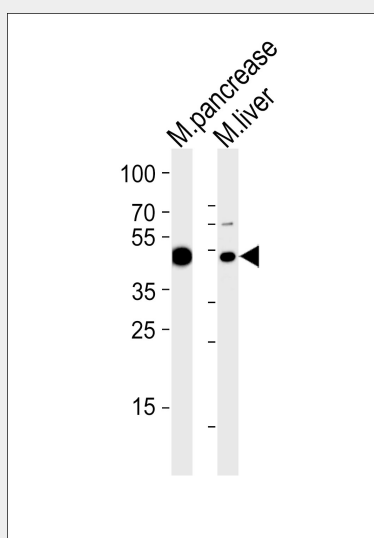
**Cellular Location**  
Nucleus.

### Mouse T Antibody (C-term) - Protocols

Provided below are standard protocols that you may find useful for product applications.

- [Western Blot](#)
- [Blocking Peptides](#)
- [Dot Blot](#)
- [Immunohistochemistry](#)
- [Immunofluorescence](#)
- [Immunoprecipitation](#)
- [Flow Cytometry](#)
- [Cell Culture](#)

### Mouse T Antibody (C-term) - Images



Western blot analysis of lysates from mouse pancreas and mouse liver tissue lysate (from left to right), using Mouse T Antibody (C-term)(Cat. #AP20762c). AP20762c was diluted at 1:1000 at each lane. A goat anti-rabbit IgG H&L(HRP) at 1:5000 dilution was used as the secondary antibody. Lysates at 35ug per lane.

### Mouse T Antibody (C-term) - Background

Involved in the transcriptional regulation of genes required for mesoderm formation and differentiation. Binds to a palindromic site (called T site) and activates gene transcription when bound to such a site.

### Mouse T Antibody (C-term) - References

Herrmann B.G.,et al.Nature 343:617-622(1990).  
Kispert A.,et al.EMBO J. 12:3211-3220(1993).  
Kispert A.,et al.EMBO J. 14:4763-4772(1995).