

ZDHHC14 Antibody (Center)
Purified Rabbit Polyclonal Antibody (Pab)
Catalog # AP20773c**Specification**

ZDHHC14 Antibody (Center) - Product Information

Application	WB,E
Primary Accession	Q8IZN3
Other Accession	Q8BQQ1
Reactivity	Mouse
Host	Rabbit
Clonality	Polyclonal
Isotype	Rabbit IgG
Calculated MW	53388
Antigen Region	283-317

ZDHHC14 Antibody (Center) - Additional Information**Gene ID** 79683**Other Names**

Probable palmitoyltransferase ZDHHC14, NEW1 domain-containing protein, NEW1CP, Zinc finger DHHC domain-containing protein 14, DHHC-14, ZDHHC14

Target/Specificity

This ZDHHC14 antibody is generated from a rabbit immunized with a KLH conjugated synthetic peptide between 283-317 amino acids from the Central region of human ZDHHC14.

Dilution

WB~~1:1000

E~~Use at an assay dependent concentration.

Format

Purified polyclonal antibody supplied in PBS with 0.09% (W/V) sodium azide. This antibody is purified through a protein A column, followed by peptide affinity purification.

Storage

Maintain refrigerated at 2-8°C for up to 2 weeks. For long term storage store at -20°C in small aliquots to prevent freeze-thaw cycles.

Precautions

ZDHHC14 Antibody (Center) is for research use only and not for use in diagnostic or therapeutic procedures.

ZDHHC14 Antibody (Center) - Protein Information**Name** ZDHHC14 ([HGNC:20341](#))

Function Palmitoyltransferase that could catalyze the addition of palmitate onto various protein substrates. May have a palmitoyltransferase activity toward the beta-2 adrenergic receptor/ADRB2 and thereby regulate G protein-coupled receptor signaling (PubMed:[27481942](#)). May play a role in cell differentiation and apoptosis (PubMed:[21151021](#), PubMed:[24407904](#)).

Cellular Location

Endoplasmic reticulum membrane; Multi-pass membrane protein. Golgi apparatus, Golgi stack membrane; Multi-pass membrane protein

Tissue Location

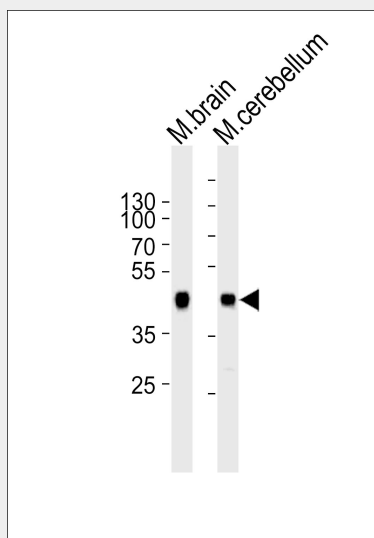
Widely expressed..

ZDHHC14 Antibody (Center) - Protocols

Provided below are standard protocols that you may find useful for product applications.

- [Western Blot](#)
- [Blocking Peptides](#)
- [Dot Blot](#)
- [Immunohistochemistry](#)
- [Immunofluorescence](#)
- [Immunoprecipitation](#)
- [Flow Cytometry](#)
- [Cell Culture](#)

ZDHHC14 Antibody (Center) - Images



Western blot analysis of lysates from mouse brain and mouse cerebellum tissue lysate (from left to right), using ZDHHC14 Antibody (Center)(Cat. #AP20773c). AP20773c was diluted at 1:1000 at each lane. A goat anti-rabbit IgG H&L(HRP) at 1:5000 dilution was used as the secondary antibody. Lysates at 35ug per lane.

ZDHHC14 Antibody (Center) - References

Guo J.H.,et al.Submitted (AUG-2002) to the EMBL/GenBank/DDBJ databases.
Mungall A.J.,et al.Nature 425:805-811(2003).
Mural R.J.,et al.Submitted (SEP-2005) to the EMBL/GenBank/DDBJ databases.

Ota T.,et al.Nat. Genet. 36:40-45(2004).

Dephoure N.,et al.Proc. Natl. Acad. Sci. U.S.A. 105:10762-10767(2008).