

**SYCP3 Antibody (N-term)**  
**Purified Rabbit Polyclonal Antibody (Pab)**  
**Catalog # AP20774a****Specification**

---

**SYCP3 Antibody (N-term) - Product Information**

Application	WB,E
Primary Accession	<a href="#">Q8IZU3</a>
Reactivity	Human
Host	Rabbit
Clonality	Polyclonal
Isotype	Rabbit IgG
Calculated MW	27729

**SYCP3 Antibody (N-term) - Additional Information****Gene ID** 50511**Other Names**

Synaptonemal complex protein 3, SCP-3, SYCP3, SCP3

**Target/Specificity**

This SYCP3 antibody is generated from a rabbit immunized with a KLH conjugated synthetic peptide between 13-46amino acids from the N-terminal region of human SYCP3.

**Dilution**

WB~~1:1000

E~~Use at an assay dependent concentration.

**Format**

Purified polyclonal antibody supplied in PBS with 0.09% (W/V) sodium azide. This antibody is purified through a protein A column, followed by peptide affinity purification.

**Storage**

Maintain refrigerated at 2-8°C for up to 2 weeks. For long term storage store at -20°C in small aliquots to prevent freeze-thaw cycles.

**Precautions**

SYCP3 Antibody (N-term) is for research use only and not for use in diagnostic or therapeutic procedures.

**SYCP3 Antibody (N-term) - Protein Information****Name** SYCP3**Synonyms** SCP3**Function** Component of the synaptonemal complexes (SCS), formed between homologous

chromosomes during meiotic prophase. Required for centromere pairing during meiosis in male germ cells (By similarity). Required for normal meiosis during spermatogenesis and male fertility (PubMed:[14643120](#)). Plays a lesser role in female fertility. Required for efficient phosphorylation of HORMAD1 and HORMAD2 (By similarity).

#### Cellular Location

Nucleus {ECO:0000250|UniProtKB:Q60547}. Chromosome {ECO:0000250|UniProtKB:Q60547}. Chromosome, centromere {ECO:0000250|UniProtKB:Q60547}. Note=It is present in early unpaired cores, in the lateral domains of the synaptonemal complex and in the chromosome cores when they separate at diplotene. It is found axial to the metaphase I chromosomes and in association with pairs of sister centromeres. The centromere-associated protein becomes dissociated from the centromeres at anaphase II and is not found in mitotic metaphase centromeres. {ECO:0000250|UniProtKB:Q60547}

#### Tissue Location

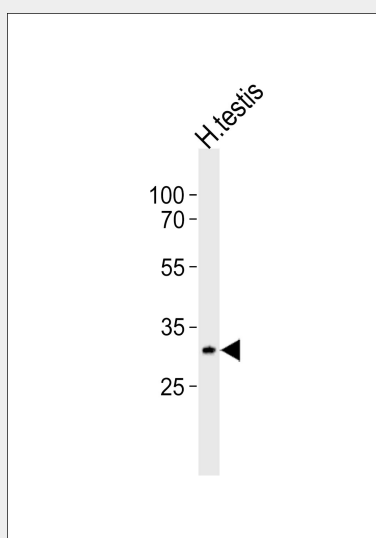
Testis-specific.

### SYCP3 Antibody (N-term) - Protocols

Provided below are standard protocols that you may find useful for product applications.

- [Western Blot](#)
- [Blocking Peptides](#)
- [Dot Blot](#)
- [Immunohistochemistry](#)
- [Immunofluorescence](#)
- [Immunoprecipitation](#)
- [Flow Cytometry](#)
- [Cell Culture](#)

### SYCP3 Antibody (N-term) - Images



Western blot analysis of lysate from human testis tissue lysate, using SYCP3 Antibody (N-term)(Cat. #AP20774a). AP20774a was diluted at 1:1000. A goat anti-rabbit IgG H&L(HRP) at 1:5000 dilution was used as the secondary antibody. Lysate at 35ug.

### SYCP3 Antibody (N-term) - Background

Component of the transverse filaments of synaptonemal complexes (SCS), formed between homologous chromosomes during meiotic prophase. Has an essential meiotic function in spermatogenesis. May be important for testis development. Required for efficient phosphorylation of HORMAD1 and HORMAD2 (By similarity).

#### **SYCP3 Antibody (N-term) - References**

Martinez-Garay I.,et al.Genomics 80:259-267(2002).  
Adamah D.J.B.,et al.Submitted (JUN-2002) to the EMBL/GenBank/DDBJ databases.  
Miyamoto T.,et al.Lancet 362:1714-1719(2003).