

DYNC1H1 Antibody (C-term)
Purified Rabbit Polyclonal Antibody (Pab)
Catalog # AP20786c**Specification**

DYNC1H1 Antibody (C-term) - Product Information

Application	WB,E
Primary Accession	Q14204
Other Accession	P38650 , Q9JHU4
Reactivity	Human, Rat
Predicted	Mouse
Host	Rabbit
Clonality	Polyclonal
Isotype	Rabbit IgG
Calculated MW	532408

DYNC1H1 Antibody (C-term) - Additional Information**Gene ID** 1778**Other Names**

Cytoplasmic dynein 1 heavy chain 1, Cytoplasmic dynein heavy chain 1, Dynein heavy chain, cytosolic, DYNC1H1, DHC1, DNCH1, DNCL, DNECL, DYHC, KIAA0325

Target/Specificity

This DYNC1H1 antibody is generated from a rabbit immunized with a KLH conjugated synthetic peptide between 4224-4257 amino acids from the C-terminal region of human DYNC1H1.

Dilution

WB~~1:1000

E~~Use at an assay dependent concentration.

Format

Purified polyclonal antibody supplied in PBS with 0.09% (W/V) sodium azide. This antibody is purified through a protein A column, followed by peptide affinity purification.

Storage

Maintain refrigerated at 2-8°C for up to 2 weeks. For long term storage store at -20°C in small aliquots to prevent freeze-thaw cycles.

Precautions

DYNC1H1 Antibody (C-term) is for research use only and not for use in diagnostic or therapeutic procedures.

DYNC1H1 Antibody (C-term) - Protein Information**Name** DYNC1H1 ([HGNC:2961](#))

Function Cytoplasmic dynein 1 acts as a motor for the intracellular retrograde motility of vesicles and organelles along microtubules. Dynein has ATPase activity; the force-producing power stroke is thought to occur on release of ADP. Plays a role in mitotic spindle assembly and metaphase plate congression (PubMed:[27462074](#)).

Cellular Location

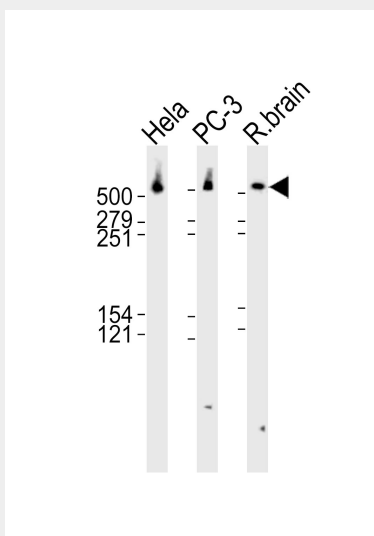
Cytoplasm, cytoskeleton

DYNC1H1 Antibody (C-term) - Protocols

Provided below are standard protocols that you may find useful for product applications.

- [Western Blot](#)
- [Blocking Peptides](#)
- [Dot Blot](#)
- [Immunohistochemistry](#)
- [Immunofluorescence](#)
- [Immunoprecipitation](#)
- [Flow Cytometry](#)
- [Cell Culture](#)

DYNC1H1 Antibody (C-term) - Images



Western blot analysis of lysates from HeLa, PC-3 cell line and rat brain tissue lysate (from left to right), using DYNC1H1 Antibody (C-term) (Cat. #AP20786c). AP20786c was diluted at 1:1000 at each lane. A goat anti-rabbit IgG H&L(HRP) at 1:10000 dilution was used as the secondary antibody. Lysates at 35ug per lane.

DYNC1H1 Antibody (C-term) - Background

Cytoplasmic dynein 1 acts as a motor for the intracellular retrograde motility of vesicles and organelles along microtubules. Dynein has ATPase activity; the force-producing power stroke is thought to occur on release of ADP.

DYNC1H1 Antibody (C-term) - References

Nagase T., et al. DNA Res. 4:141-150(1997).

Ohara O.,et al.Submitted (AUG-2005) to the EMBL/GenBank/DDBJ databases.
Yamakawa H.,et al.Submitted (JAN-2007) to the EMBL/GenBank/DDBJ databases.
Vaisberg E.A.,et al.J. Cell Biol. 133:831-842(1996).
Vaisberg E.A.,et al.J. Cell Biol. 123:849-858(1993).