

MTX2 Antibody (Center)
Purified Rabbit Polyclonal Antibody (Pab)
Catalog # AP20787c**Specification**

MTX2 Antibody (Center) - Product Information

Application	WB,E
Primary Accession	O75431
Reactivity	Human
Host	Rabbit
Clonality	Polyclonal
Isotype	Rabbit IgG
Calculated MW	29763

MTX2 Antibody (Center) - Additional Information**Gene ID** 10651**Other Names**

Metaxin-2, Mitochondrial outer membrane import complex protein 2, MTX2

Target/Specificity

This MTX2 antibody is generated from a rabbit immunized with a KLH conjugated synthetic peptide between 102-126 amino acids from the Central region of human MTX2.

Dilution

WB~~1:1000

E~~Use at an assay dependent concentration.

Format

Purified polyclonal antibody supplied in PBS with 0.09% (W/V) sodium azide. This antibody is purified through a protein A column, followed by peptide affinity purification.

Storage

Maintain refrigerated at 2-8°C for up to 2 weeks. For long term storage store at -20°C in small aliquots to prevent freeze-thaw cycles.

Precautions

MTX2 Antibody (Center) is for research use only and not for use in diagnostic or therapeutic procedures.

MTX2 Antibody (Center) - Protein Information**Name** MTX2**Function** Involved in transport of proteins into the mitochondrion.**Cellular Location**

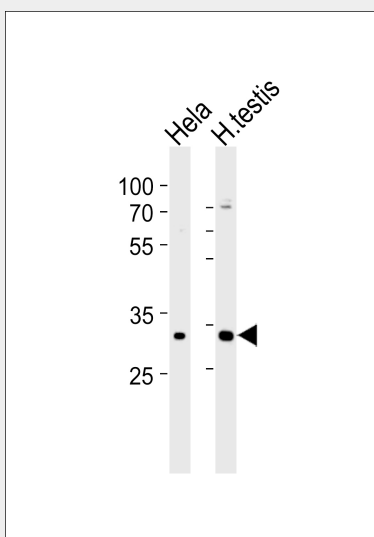
Mitochondrion outer membrane. Mitochondrion

MTX2 Antibody (Center) - Protocols

Provided below are standard protocols that you may find useful for product applications.

- [Western Blot](#)
- [Blocking Peptides](#)
- [Dot Blot](#)
- [Immunohistochemistry](#)
- [Immunofluorescence](#)
- [Immunoprecipitation](#)
- [Flow Cytometry](#)
- [Cell Culture](#)

MTX2 Antibody (Center) - Images



Western blot analysis of lysates from HeLa cell line human testis tissue lysate (from left to right), using MTX2 Antibody (Center) (Cat. #AP20787c). AP20787c was diluted at 1:1000 at each lane. A goat anti-rabbit IgG H&L (HRP) at 1:5000 dilution was used as the secondary antibody. Lysates at 35 µg per lane.

MTX2 Antibody (Center) - Background

Involved in transport of proteins into the mitochondrion.

MTX2 Antibody (Center) - References

Armstrong L.C., et al. J. Cell. Biochem. 74:11-22 (1999).
Ota T., et al. Nat. Genet. 36:40-45 (2004).
Hillier L.W., et al. Nature 434:724-731 (2005).
Mural R.J., et al. Submitted (SEP-2005) to the EMBL/GenBank/DBJ databases.
Burkard T.R., et al. BMC Syst. Biol. 5:17-17 (2011).