

EHD4 Antibody (C-term)
Purified Rabbit Polyclonal Antibody (Pab)
Catalog # AP20790c

Specification

EHD4 Antibody (C-term) - Product Information

Application	WB,E
Primary Accession	Q9H223 , Q9EQP2
Reactivity	Human, Mouse
Host	Rabbit
Clonality	Polyclonal
Isotype	Rabbit IgG

EHD4 Antibody (C-term) - Additional Information

Other Names

EH domain-containing protein 4, Hepatocellular carcinoma-associated protein 10/11, PAST homolog 4, EHD4, HCA10, HCA11, PAST4

Target/Specificity

This EHD4 antibody is generated from a rabbit immunized with a KLH conjugated synthetic peptide between 527-561 amino acids from the C-terminal region of human EHD4.

Dilution

WB~1:1000

E~Use at an assay dependent concentration.

Format

Purified polyclonal antibody supplied in PBS with 0.09% (W/V) sodium azide. This antibody is purified through a protein A column, followed by peptide affinity purification.

Storage

Maintain refrigerated at 2-8°C for up to 2 weeks. For long term storage store at -20°C in small aliquots to prevent freeze-thaw cycles.

Precautions

EHD4 Antibody (C-term) is for research use only and not for use in diagnostic or therapeutic procedures.

EHD4 Antibody (C-term) - Protein Information

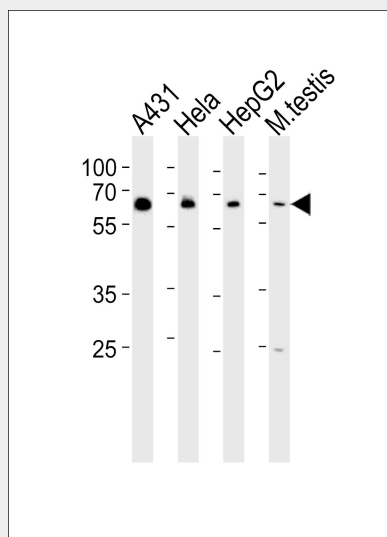
EHD4 Antibody (C-term) - Protocols

Provided below are standard protocols that you may find useful for product applications.

- [Western Blot](#)

- [Blocking Peptides](#)
- [Dot Blot](#)
- [Immunohistochemistry](#)
- [Immunofluorescence](#)
- [Immunoprecipitation](#)
- [Flow Cytometry](#)
- [Cell Culture](#)

EHD4 Antibody (C-term) - Images



Western blot analysis of lysates from A431, HeLa, HepG2 cell line and mouse testis tissue lysate (from left to right), using EHD4 Antibody (C-term) (Cat. #AP20790c). AP20790c was diluted at 1:1000 at each lane. A goat anti-rabbit IgG H&L (HRP) at 1:10000 dilution was used as the secondary antibody. Lysates at 35ug per lane.

EHD4 Antibody (C-term) - Background

Plays a role in early endosomal transport.

EHD4 Antibody (C-term) - References

Wang Y.,et al.J. Immunol. 169:1102-1109(2002).
Wang Y.-G.,et al.Submitted (SEP-2000) to the EMBL/GenBank/DDBJ databases.
Benjamin S.,et al.Submitted (DEC-2001) to the EMBL/GenBank/DDBJ databases.
Pohl U.,et al.Genomics 63:255-262(2000).
Rush J.,et al.Nat. Biotechnol. 23:94-101(2005).