

SLC2A4 Antibody (C-term)
Purified Rabbit Polyclonal Antibody (Pab)
Catalog # AP20792a**Specification**

SLC2A4 Antibody (C-term) - Product Information

Application	WB,E
Primary Accession	P14672
Other Accession	P19357 , P14142
Reactivity	Human
Predicted	Mouse, Rat
Host	Rabbit
Clonality	Polyclonal
Isotype	Rabbit IgG
Calculated MW	54787

SLC2A4 Antibody (C-term) - Additional Information**Gene ID** 6517**Other Names**

Solute carrier family 2, facilitated glucose transporter member 4, Glucose transporter type 4, insulin-responsive, GLUT-4, SLC2A4, GLUT4

Target/Specificity

This SLC2A4 antibody is generated from a rabbit immunized with a KLH conjugated synthetic peptide between 495-529 amino acids from the C-terminal region of human SLC2A4.

Dilution

WB~~1:1000

E~~Use at an assay dependent concentration.

Format

Purified polyclonal antibody supplied in PBS with 0.09% (W/V) sodium azide. This antibody is purified through a protein A column, followed by peptide affinity purification.

Storage

Maintain refrigerated at 2-8°C for up to 2 weeks. For long term storage store at -20°C in small aliquots to prevent freeze-thaw cycles.

Precautions

SLC2A4 Antibody (C-term) is for research use only and not for use in diagnostic or therapeutic procedures.

SLC2A4 Antibody (C-term) - Protein Information**Name** SLC2A4 ([HGNC:11009](#))

Function Insulin-regulated facilitative glucose transporter, which plays a key role in removal of glucose from circulation. Response to insulin is regulated by its intracellular localization: in the absence of insulin, it is efficiently retained intracellularly within storage compartments in muscle and fat cells. Upon insulin stimulation, translocates from these compartments to the cell surface where it transports glucose from the extracellular milieu into the cell.

Cellular Location

Cell membrane {ECO:0000250|UniProtKB:P14142}; Multi-pass membrane protein {ECO:0000250|UniProtKB:P14142} Endomembrane system; Multi-pass membrane protein. Cytoplasm, perinuclear region {ECO:0000250|UniProtKB:P14142}. Note=Localizes primarily to the perinuclear region, undergoing continued recycling to the plasma membrane where it is rapidly reinternalized (PubMed:8300557). The dileucine internalization motif is critical for intracellular sequestration (PubMed:8300557). Insulin stimulation induces translocation to the cell membrane (By similarity) {ECO:0000250|UniProtKB:P14142, ECO:0000269|PubMed:8300557}

Tissue Location

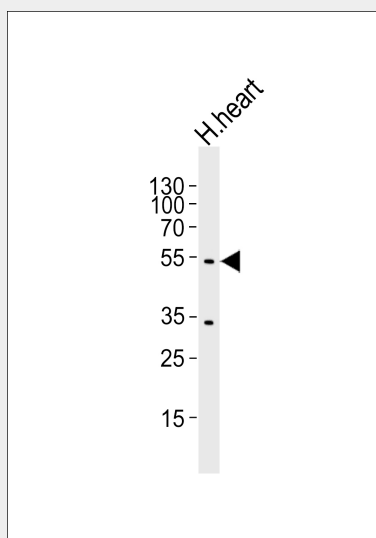
Skeletal and cardiac muscles; brown and white fat.

SLC2A4 Antibody (C-term) - Protocols

Provided below are standard protocols that you may find useful for product applications.

- [Western Blot](#)
- [Blocking Peptides](#)
- [Dot Blot](#)
- [Immunohistochemistry](#)
- [Immunofluorescence](#)
- [Immunoprecipitation](#)
- [Flow Cytometry](#)
- [Cell Culture](#)

SLC2A4 Antibody (C-term) - Images



Western blot analysis of lysate from human heart tissue, using SLC2A4 Antibody (C-term)(Cat. #AP20792a). AP20792a was diluted at 1:1000. A goat anti-rabbit IgG H&L(HRP) at 1:5000 dilution was used as the secondary antibody. Lysate at 35ug.

SLC2A4 Antibody (C-term) - Background

Insulin-regulated facilitative glucose transporter.

SLC2A4 Antibody (C-term) - References

Fukumoto H.,et al.J. Biol. Chem. 264:7776-7779(1989).
Buse J.B.,et al.Diabetes 41:1436-1445(1992).
Chiaramonte R.,et al.Gene 130:307-308(1993).
Verhey K.J.,et al.J. Biol. Chem. 269:2353-2356(1994).
Laloti V.S.,et al.J. Biol. Chem. 277:19783-19791(2002).