

TRIM43B Antibody (Center)
Purified Rabbit Polyclonal Antibody (Pab)
Catalog # AP20799c**Specification**

TRIM43B Antibody (Center) - Product Information

Application	WB,E
Primary Accession	A6NCK2
Other Accession	Q96BQ3
Reactivity	Human
Host	Rabbit
Clonality	Polyclonal
Isotype	Rabbit IgG
Calculated MW	52310

TRIM43B Antibody (Center) - Additional Information**Gene ID** 653192**Other Names**

Tripartite motif-containing protein 43B, TRIM43B

Target/Specificity

This TRIM43B antibody is generated from a rabbit immunized with a KLH conjugated synthetic peptide between 222-257 amino acids from the Central region of human TRIM43B.

Dilution

WB~~1:1000

E~~Use at an assay dependent concentration.

Format

Purified polyclonal antibody supplied in PBS with 0.09% (W/V) sodium azide. This antibody is purified through a protein A column, followed by peptide affinity purification.

Storage

Maintain refrigerated at 2-8°C for up to 2 weeks. For long term storage store at -20°C in small aliquots to prevent freeze-thaw cycles.

Precautions

TRIM43B Antibody (Center) is for research use only and not for use in diagnostic or therapeutic procedures.

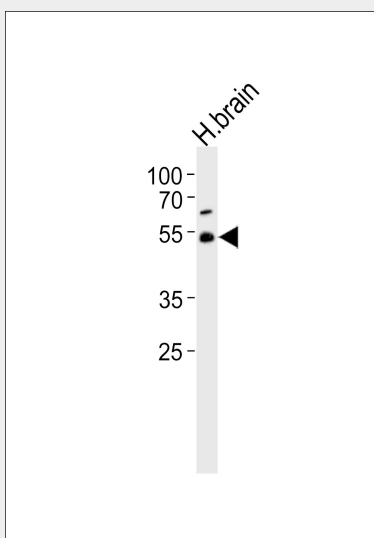
TRIM43B Antibody (Center) - Protein Information**Name** TRIM43B

TRIM43B Antibody (Center) - Protocols

Provided below are standard protocols that you may find useful for product applications.

- [Western Blot](#)
- [Blocking Peptides](#)
- [Dot Blot](#)
- [Immunohistochemistry](#)
- [Immunofluorescence](#)
- [Immunoprecipitation](#)
- [Flow Cytometry](#)
- [Cell Culture](#)

TRIM43B Antibody (Center) - Images



Western blot analysis of lysate from human brain tissue lysate, using TRIM43B Antibody (Center)(Cat. #AP20799c). AP20799c was diluted at 1:1000. A goat anti-rabbit IgG H&L(HRP) at 1:10000 dilution was used as the secondary antibody. Lysate at 35ug.

TRIM43B Antibody (Center) - References

Hillier L.W.,et al.Nature 434:724-731(2005).