

MINOS1 Antibody (N-term)
Purified Rabbit Polyclonal Antibody (Pab)
Catalog # AP20802a**Specification**

MINOS1 Antibody (N-term) - Product Information

Application	WB,E
Primary Accession	Q5TGZ0
Other Accession	Q7TNS2
Reactivity	Mouse
Host	Rabbit
Clonality	Polyclonal
Isotype	Rabbit IgG
Calculated MW	8808
Antigen Region	1-33

MINOS1 Antibody (N-term) - Additional Information**Gene ID** 440574**Other Names**

MICOS complex subunit MIC10, Mitochondrial inner membrane organizing system protein 1, MINOS1, C1orf151, MIC10

Target/Specificity

This MINOS1 antibody is generated from a rabbit immunized with a KLH conjugated synthetic peptide between 1-33 amino acids from the N-terminal region of human MINOS1.

Dilution

WB~~1:1000

E~~Use at an assay dependent concentration.

Format

Purified polyclonal antibody supplied in PBS with 0.09% (W/V) sodium azide. This antibody is purified through a protein A column, followed by peptide affinity purification.

Storage

Maintain refrigerated at 2-8°C for up to 2 weeks. For long term storage store at -20°C in small aliquots to prevent freeze-thaw cycles.

Precautions

MINOS1 Antibody (N-term) is for research use only and not for use in diagnostic or therapeutic procedures.

MINOS1 Antibody (N-term) - Protein Information**Name** MICOS10 ([HGNC:32068](#))

Function Component of the MICOS complex, a large protein complex of the mitochondrial inner membrane that plays crucial roles in the maintenance of crista junctions, inner membrane architecture, and formation of contact sites to the outer membrane.

Cellular Location

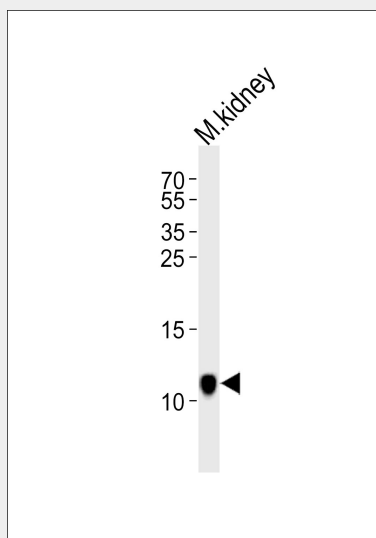
Mitochondrion inner membrane; Single-pass membrane protein. Note=The C-terminus is located in the intermembrane space (By similarity), while the location of the N- terminus has not been determined yet. As some programs predict the presence of 2 closely apposed membrane domains, it has been proposed that the protein may cross the membrane twice and that both termini may face the intermembrane space (PubMed:22114354). {ECO:0000250, ECO:0000269|PubMed:22114354}

MINOS1 Antibody (N-term) - Protocols

Provided below are standard protocols that you may find useful for product applications.

- [Western Blot](#)
- [Blocking Peptides](#)
- [Dot Blot](#)
- [Immunohistochemistry](#)
- [Immunofluorescence](#)
- [Immunoprecipitation](#)
- [Flow Cytometry](#)
- [Cell Culture](#)

MINOS1 Antibody (N-term) - Images



Western blot analysis of lysate from mouse kidney tissue lysate, using MINOS1 Antibody (N-term)(Cat. #AP20802a). AP20802a was diluted at 1:1000. A goat anti-rabbit IgG H&L(HRP) at 1:10000 dilution was used as the secondary antibody. Lysate at 35ug.

MINOS1 Antibody (N-term) - Background

May play a role in mitochondrial architecture (By similarity).

MINOS1 Antibody (N-term) - References

Gregory S.G.,et al.Nature 441:315-321(2006).
Alkhaja A.K.,et al.Mol. Biol. Cell 23:247-257(2012).
Van Damme P.,et al.Proc. Natl. Acad. Sci. U.S.A. 109:12449-12454(2012).