

**CTSD(heavy chain) Antibody (Center)**  
**Purified Rabbit Polyclonal Antibody (Pab)**  
**Catalog # AP20803c****Specification**

---

**CTSD(heavy chain) Antibody (Center) - Product Information**

Application	WB,E
Primary Accession	<a href="#">P07339</a>
Other Accession	<a href="#">P18242</a> , <a href="#">P80209</a>
Reactivity	Human
Predicted	Bovine, Mouse
Host	Rabbit
Clonality	Polyclonal
Isotype	Rabbit IgG
Calculated MW	44552

**CTSD(heavy chain) Antibody (Center) - Additional Information****Gene ID** 1509**Other Names**

Cathepsin D, Cathepsin D light chain, Cathepsin D heavy chain, CTSD, CPSD

**Target/Specificity**

This CTSD(heavy chain) antibody is generated from a rabbit immunized with a KLH conjugated synthetic peptide between 241-273 amino acids from the Central region of human CTSD(heavy chain).

**Dilution**

WB~~1:1000

E~~Use at an assay dependent concentration.

**Format**

Purified polyclonal antibody supplied in PBS with 0.09% (W/V) sodium azide. This antibody is purified through a protein A column, followed by peptide affinity purification.

**Storage**

Maintain refrigerated at 2-8°C for up to 2 weeks. For long term storage store at -20°C in small aliquots to prevent freeze-thaw cycles.

**Precautions**

CTSD(heavy chain) Antibody (Center) is for research use only and not for use in diagnostic or therapeutic procedures.

**CTSD(heavy chain) Antibody (Center) - Protein Information****Name** CTSD

## Synonyms CPSD

**Function** Acid protease active in intracellular protein breakdown. Plays a role in APP processing following cleavage and activation by ADAM30 which leads to APP degradation (PubMed:[27333034](#)). Involved in the pathogenesis of several diseases such as breast cancer and possibly Alzheimer disease.

## Cellular Location

Lysosome. Melanosome. Secreted, extracellular space. Note=Identified by mass spectrometry in melanosome fractions from stage I to stage IV. In aortic samples, detected as an extracellular protein loosely bound to the matrix (PubMed:20551380)

## Tissue Location

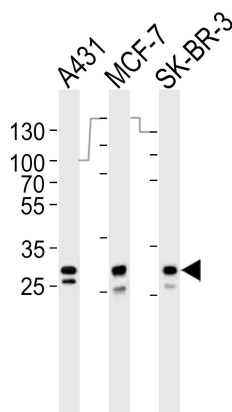
Expressed in the aorta extracellular space (at protein level) (PubMed:20551380). Expressed in liver (at protein level) (PubMed:1426530).

## CTSD(heavy chain) Antibody (Center) - Protocols

Provided below are standard protocols that you may find useful for product applications.

- [Western Blot](#)
- [Blocking Peptides](#)
- [Dot Blot](#)
- [Immunohistochemistry](#)
- [Immunofluorescence](#)
- [Immunoprecipitation](#)
- [Flow Cytometry](#)
- [Cell Culture](#)

## CTSD(heavy chain) Antibody (Center) - Images



Western blot analysis of lysates from A431, MCF-7, SK-BR-3 cell line (from left to right), using CTSD(heavy chain) Antibody (Center)(Cat. #AP20803c). AP20803c was diluted at 1:1000 at each lane. A goat anti-rabbit IgG H&L(HRP) at 1:10000 dilution was used as the secondary antibody. Lysates at 35ug per lane.

## CTSD(heavy chain) Antibody (Center) - Background

Acid protease active in intracellular protein breakdown. Involved in the pathogenesis of several diseases such as breast cancer and possibly Alzheimer disease.

#### **CTSD(heavy chain) Antibody (Center) - References**

Faust P.L.,et al.Proc. Natl. Acad. Sci. U.S.A. 82:4910-4914(1985).  
Westley B.R.,et al.Nucleic Acids Res. 15:3773-3786(1987).  
Redecker B.,et al.DNA Cell Biol. 10:423-431(1991).  
Ebert L.,et al.Submitted (JUN-2004) to the EMBL/GenBank/DDBJ databases.  
Kalnine N.,et al.Submitted (OCT-2004) to the EMBL/GenBank/DDBJ databases.