

PRDM13 Antibody (N-term)
Purified Rabbit Polyclonal Antibody (Pab)
Catalog # AP20805a

Specification

PRDM13 Antibody (N-term) - Product Information

Application	WB, IHC-P,E
Primary Accession	Q9H4Q3
Reactivity	Human
Host	Rabbit
Clonality	Polyclonal
Isotype	Rabbit IgG

PRDM13 Antibody (N-term) - Additional Information

Gene ID 59336

Other Names

PR domain zinc finger protein 13, 211-, PR domain-containing protein 13, PRDM13, PFM10

Target/Specificity

This PRDM13 antibody is generated from a rabbit immunized with a KLH conjugated synthetic peptide between 2-36 amino acids from the N-terminal region of human PRDM13.

Dilution

WB~~1:1000

IHC-P~~1:100

E~~Use at an assay dependent concentration.

Format

Purified polyclonal antibody supplied in PBS with 0.09% (W/V) sodium azide. This antibody is purified through a protein A column, followed by peptide affinity purification.

Storage

Maintain refrigerated at 2-8°C for up to 2 weeks. For long term storage store at -20°C in small aliquots to prevent freeze-thaw cycles.

Precautions

PRDM13 Antibody (N-term) is for research use only and not for use in diagnostic or therapeutic procedures.

PRDM13 Antibody (N-term) - Protein Information

Name PRDM13

Synonyms PFM10

Function May be involved in transcriptional regulation. Is required for the differentiation of

KISS1-expressing neurons in the arcuate (Arc) nucleus of the hypothalamus. Is a critical regulator of GABAergic cell fate in the cerebellum, required for normal postnatal cerebellar development (By similarity).

Cellular Location

Nucleus.

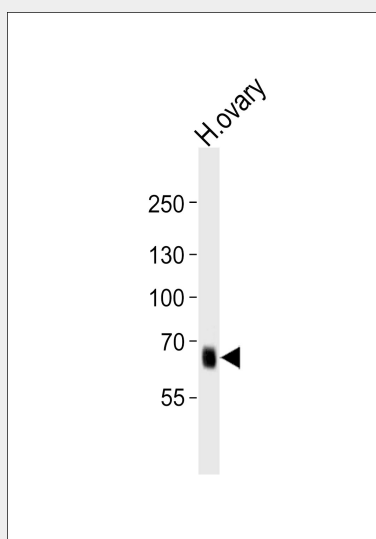
Tissue Location

In the embryo, expressed in neural stem cells of the hindbrain.

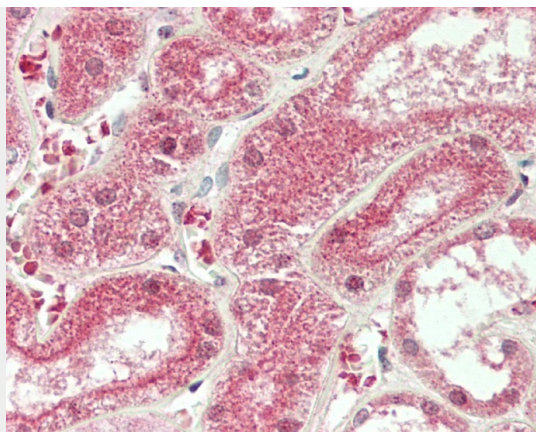
PRDM13 Antibody (N-term) - Protocols

Provided below are standard protocols that you may find useful for product applications.

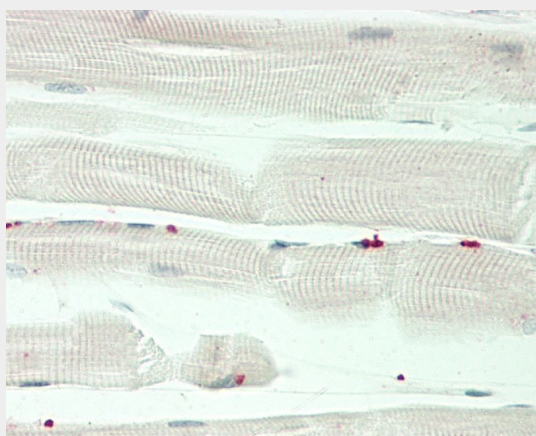
- [Western Blot](#)
- [Blocking Peptides](#)
- [Dot Blot](#)
- [Immunohistochemistry](#)
- [Immunofluorescence](#)
- [Immunoprecipitation](#)
- [Flow Cytometry](#)
- [Cell Culture](#)

PRDM13 Antibody (N-term) - Images

Western blot analysis of lysate from human ovary tissue lysate, using PRDM13 Antibody (N-term)(Cat. #AP20805a). AP20805a was diluted at 1:1000. A goat anti-rabbit IgG H&L(HRP) at 1:10000 dilution was used as the secondary antibody. Lysate at 35ug.



Formalin-fixed and paraffin-embedded H.kidney tissue reacted with PRDM13 Antibody (N-term) (Cat#AP20805a).



Formalin-fixed and paraffin-embedded H.skeletal muscle tissue reacted with PRDM13 Antibody (N-term) (Cat#AP20805a).

PRDM13 Antibody (N-term) - Background

May be involved in transcriptional regulation.

PRDM13 Antibody (N-term) - References

Yang X.-H.,et al.Submitted (JUL-2000) to the EMBL/GenBank/DDBJ databases.

Mungall A.J.,et al.Nature 425:805-811(2003).

Mural R.J.,et al.Submitted (SEP-2005) to the EMBL/GenBank/DDBJ databases.