

**DBH Antibody (Center)**  
**Purified Rabbit Polyclonal Antibody (Pab)**  
**Catalog # AP20809c****Specification**

---

**DBH Antibody (Center) - Product Information**

Application	WB,E
Primary Accession	<a href="#">P09172</a>
Reactivity	Human
Host	Rabbit
Clonality	Polyclonal
Isotype	Rabbit IgG
Calculated MW	69065

**DBH Antibody (Center) - Additional Information****Gene ID** 1621**Other Names**

Dopamine beta-hydroxylase, Dopamine beta-monooxygenase, Soluble dopamine beta-hydroxylase, DBH

**Target/Specificity**

This DBH antibody is generated from a rabbit immunized with a KLH conjugated synthetic peptide between 199-232 amino acids from the Central region of human DBH.

**Dilution**

WB~~1:1000

E~~Use at an assay dependent concentration.

**Format**

Purified polyclonal antibody supplied in PBS with 0.09% (W/V) sodium azide. This antibody is purified through a protein A column, followed by peptide affinity purification.

**Storage**

Maintain refrigerated at 2-8°C for up to 2 weeks. For long term storage store at -20°C in small aliquots to prevent freeze-thaw cycles.

**Precautions**

DBH Antibody (Center) is for research use only and not for use in diagnostic or therapeutic procedures.

**DBH Antibody (Center) - Protein Information****Name** DBH

**Function** Catalyzes the hydroxylation of dopamine to noradrenaline (also known as norepinephrine), and is thus vital for regulation of these neurotransmitters.

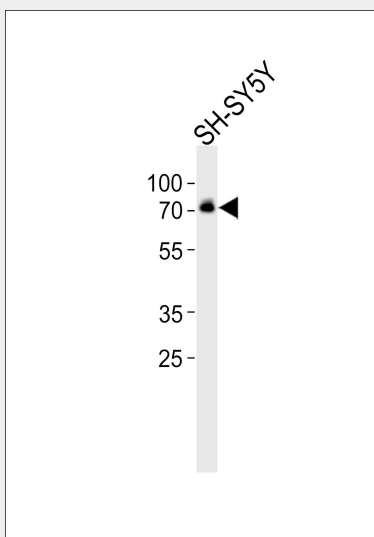
**Cellular Location**

[Soluble dopamine beta-hydroxylase]: Cytoplasmic vesicle, secretory vesicle lumen Cytoplasmic vesicle, secretory vesicle, chromaffin granule lumen. Secreted

**DBH Antibody (Center) - Protocols**

Provided below are standard protocols that you may find useful for product applications.

- [Western Blot](#)
- [Blocking Peptides](#)
- [Dot Blot](#)
- [Immunohistochemistry](#)
- [Immunofluorescence](#)
- [Immunoprecipitation](#)
- [Flow Cytometry](#)
- [Cell Culture](#)

**DBH Antibody (Center) - Images**

Western blot analysis of lysate from SH-SY5Y cell line, using DBH Antibody (Center)(Cat. #AP20809c). AP20809c was diluted at 1:1000. A goat anti-rabbit IgG H&L(HRP) at 1:10000 dilution was used as the secondary antibody. Lysate at 35ug.

**DBH Antibody (Center) - Background**

Conversion of dopamine to noradrenaline.

**DBH Antibody (Center) - References**

Humphray S.J.,et al.Nature 429:369-374(2004).  
Lamouroux A.,et al.EMBO J. 6:3931-3937(1987).  
Kobayashi K.,et al.Nucleic Acids Res. 17:1089-1102(1989).  
Li B.,et al.Biochem. J. 313:57-64(1996).  
Liu T.,et al.J. Proteome Res. 4:2070-2080(2005).