

**IL13RA1 Antibody (C-term)**  
**Purified Rabbit Polyclonal Antibody (Pab)**  
**Catalog # AP20810c****Specification**

---

**IL13RA1 Antibody (C-term) - Product Information**

Application	WB,E
Primary Accession	<a href="#">P78552</a>
Reactivity	Human
Host	Rabbit
Clonality	Polyclonal
Isotype	Rabbit IgG
Calculated MW	48760

**IL13RA1 Antibody (C-term) - Additional Information****Gene ID** 3597**Other Names**

Interleukin-13 receptor subunit alpha-1, IL-13 receptor subunit alpha-1, IL-13R subunit alpha-1, IL-13R-alpha-1, IL-13RA1, Cancer/testis antigen 19, CT19, CD213a1, IL13RA1, IL13R, IL13RA

**Target/Specificity**

This IL13RA1 antibody is generated from a rabbit immunized with a KLH conjugated synthetic peptide between 207-238 amino acids from the C-terminal region of human IL13RA1.

**Dilution**

WB~~1:1000

E~~Use at an assay dependent concentration.

**Format**

Purified polyclonal antibody supplied in PBS with 0.09% (W/V) sodium azide. This antibody is purified through a protein A column, followed by peptide affinity purification.

**Storage**

Maintain refrigerated at 2-8°C for up to 2 weeks. For long term storage store at -20°C in small aliquots to prevent freeze-thaw cycles.

**Precautions**

IL13RA1 Antibody (C-term) is for research use only and not for use in diagnostic or therapeutic procedures.

**IL13RA1 Antibody (C-term) - Protein Information****Name** IL13RA1**Synonyms** IL13R, IL13RA

**Function** Binds with low affinity to interleukin-13 (IL13). Together with IL4RA can form a functional receptor for IL13. Also serves as an alternate accessory protein to the common cytokine receptor gamma chain for interleukin-4 (IL4) signaling, but cannot replace the function of IL2RG in allowing enhanced interleukin-2 (IL2) binding activity.

#### Cellular Location

Membrane; Single-pass type I membrane protein.

#### Tissue Location

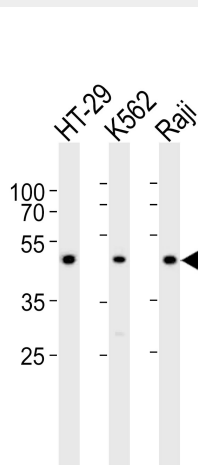
Ubiquitous. Highest levels in heart, liver, skeletal muscle and ovary; lowest levels in brain, lung and kidney Also found in B-cells, T-cells and endothelial cells

### IL13RA1 Antibody (C-term) - Protocols

Provided below are standard protocols that you may find useful for product applications.

- [Western Blot](#)
- [Blocking Peptides](#)
- [Dot Blot](#)
- [Immunohistochemistry](#)
- [Immunofluorescence](#)
- [Immunoprecipitation](#)
- [Flow Cytometry](#)
- [Cell Culture](#)

### IL13RA1 Antibody (C-term) - Images



Western blot analysis of lysates from HT-29, K562, Raji cell line (from left to right), using IL13RA1 Antibody (C-term)(Cat. #AP20810c). AP20810c was diluted at 1:1000 at each lane. A goat anti-rabbit IgG H&L(HRP) at 1:10000 dilution was used as the secondary antibody. Lysates at 35ug per lane.

### IL13RA1 Antibody (C-term) - Background

Binds with low affinity to interleukin-13 (IL13). Together with IL4RA can form a functional receptor for IL13. Also serves as an alternate accessory protein to the common cytokine receptor gamma chain for interleukin-4 (IL4) signaling, but cannot replace the function of IL2RG in allowing enhanced

interleukin-2 (IL2) binding activity.

#### **IL13RA1 Antibody (C-term) - References**

Miloux B.,et al.FEBS Lett. 401:163-166(1997).  
Gauchat J.-F.,et al.Submitted (JAN-1997) to the EMBL/GenBank/DDBJ databases.  
Aman M.J.,et al.J. Biol. Chem. 271:29265-29270(1996).  
Wada M.,et al.Submitted (SEP-1999) to the EMBL/GenBank/DDBJ databases.  
Ota T.,et al.Nat. Genet. 36:40-45(2004).