

**NDUFA12 Antibody (N-term)**  
**Purified Rabbit Polyclonal Antibody (Pab)**  
**Catalog # AP20818a****Specification**

---

**NDUFA12 Antibody (N-term) - Product Information**

Application	WB,E
Primary Accession	<a href="#">Q9UI09</a> , <a href="#">Q7TMF3</a>
Reactivity	Human, Mouse
Host	Rabbit
Clonality	Polyclonal
Isotype	Rabbit IgG

**NDUFA12 Antibody (N-term) - Additional Information****Other Names**

NADH dehydrogenase [ubiquinone] 1 alpha subcomplex subunit 12, 13 kDa  
differentiation-associated protein, Complex I-B172, CI-B172, CIB172, NADH-ubiquinone  
oxidoreductase subunit B172, NDUFA12, DAP13

**Target/Specificity**

This NDUFA12 antibody is generated from a rabbit immunized with a KLH conjugated synthetic peptide between 34-68 amino acids from the N-terminal region of human NDUFA12.

**Dilution**

WB~~1:1000  
E~~Use at an assay dependent concentration.

**Format**

Purified polyclonal antibody supplied in PBS with 0.09% (W/V) sodium azide. This antibody is purified through a protein A column, followed by peptide affinity purification.

**Storage**

Maintain refrigerated at 2-8°C for up to 2 weeks. For long term storage store at -20°C in small aliquots to prevent freeze-thaw cycles.

**Precautions**

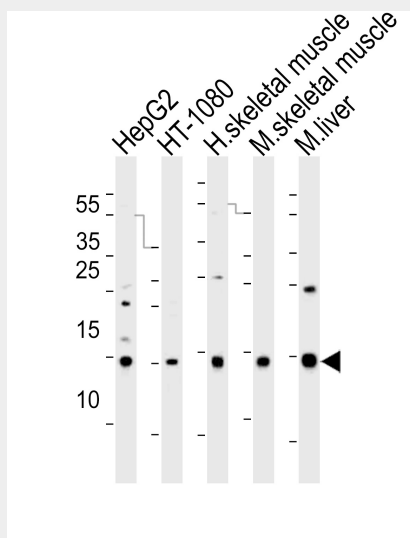
NDUFA12 Antibody (N-term) is for research use only and not for use in diagnostic or therapeutic procedures.

**NDUFA12 Antibody (N-term) - Protein Information****NDUFA12 Antibody (N-term) - Protocols**

Provided below are standard protocols that you may find useful for product applications.

- [Western Blot](#)
- [Blocking Peptides](#)
- [Dot Blot](#)
- [Immunohistochemistry](#)
- [Immunofluorescence](#)
- [Immunoprecipitation](#)
- [Flow Cytometry](#)
- [Cell Culture](#)

### NDUFA12 Antibody (N-term) - Images



Western blot analysis of lysates from HepG2, HT-1080 cell line, human skeletal muscle, mouse skeletal muscle, mouse liver tissue lysate (from left to right), using NDUFA12 Antibody (N-term) (Cat. #AP20818a). AP20818a was diluted at 1:1000 at each lane. A goat anti-rabbit IgG H&L (HRP) at 1:10000 dilution was used as the secondary antibody. Lysates at 35ug per lane.

### NDUFA12 Antibody (N-term) - Background

Accessory subunit of the mitochondrial membrane respiratory chain NADH dehydrogenase (Complex I), that is believed not to be involved in catalysis. Complex I functions in the transfer of electrons from NADH to the respiratory chain. The immediate electron acceptor for the enzyme is believed to be ubiquinone.

### NDUFA12 Antibody (N-term) - References

- Triepels R.,et al.Hum. Genet. 106:385-391(2000).  
Hu R.-M.,et al.Proc. Natl. Acad. Sci. U.S.A. 97:9543-9548(2000).  
Kalnina N.,et al.Submitted (MAY-2003) to the EMBL/GenBank/DDBJ databases.  
Scherer S.E.,et al.Nature 440:346-351(2006).  
Murray J.,et al.J. Biol. Chem. 278:13619-13622(2003).