

**GBAS Antibody (Center)**  
**Purified Rabbit Polyclonal Antibody (Pab)**  
**Catalog # AP20821c****Specification**

---

**GBAS Antibody (Center) - Product Information**

Application	WB,E
Primary Accession	<a href="#">075323</a>
Reactivity	Human
Host	Rabbit
Clonality	Polyclonal
Isotype	Rabbit IgG
Calculated MW	33743

**GBAS Antibody (Center) - Additional Information****Gene ID** 2631**Other Names**

Protein NipSnap homolog 2, NipSnap2, Glioblastoma-amplified sequence, GBAS, NIPSNAP2

**Target/Specificity**

This GBAS antibody is generated from a rabbit immunized with a KLH conjugated synthetic peptide between 176-210 amino acids from the Central region of human GBAS.

**Dilution**

WB~~1:1000

E~~Use at an assay dependent concentration.

**Format**

Purified polyclonal antibody supplied in PBS with 0.09% (W/V) sodium azide. This antibody is purified through a protein A column, followed by peptide affinity purification.

**Storage**

Maintain refrigerated at 2-8°C for up to 2 weeks. For long term storage store at -20°C in small aliquots to prevent freeze-thaw cycles.

**Precautions**

GBAS Antibody (Center) is for research use only and not for use in diagnostic or therapeutic procedures.

**GBAS Antibody (Center) - Protein Information****Name** NIPSNAP2 {ECO:0000303|PubMed:30982665, ECO:0000312|HGNC:HGNC:4179}

**Function** Protein involved in mitophagy by facilitating recruitment of the autophagy machinery required for clearance of damaged mitochondria (PubMed:[30982665](#)). Accumulates on the mitochondria surface in response to mitochondrial depolarization and acts as a 'eat me' signal by

recruiting proteins involved in selective autophagy, such as autophagy receptors (CALCOCO2/NDP52, NBR1, SQSTM1/p62, TAX1BP1 and WDFY3/ALFY) and ATG8 family proteins (MAP1LC3A, MAP1LC3B, MAP1LC3C, GABARAP, GABARAPL1 and GABARAPL2) (PubMed:[30982665](#)).

**Cellular Location**

Mitochondrion matrix

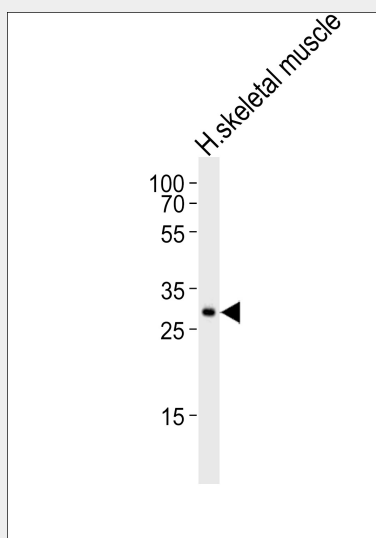
**Tissue Location**

Widely expressed (PubMed:9615231). Most abundant in heart and skeletal muscle (PubMed:9615231)

**GBAS Antibody (Center) - Protocols**

Provided below are standard protocols that you may find useful for product applications.

- [Western Blot](#)
- [Blocking Peptides](#)
- [Dot Blot](#)
- [Immunohistochemistry](#)
- [Immunofluorescence](#)
- [Immunoprecipitation](#)
- [Flow Cytometry](#)
- [Cell Culture](#)

**GBAS Antibody (Center) - Images**

Western blot analysis of lysate from human skeletal muscle tissue lysate, using GBAS Antibody (Center)(Cat. #AP20821c). AP20821c was diluted at 1:1000. A goat anti-rabbit IgG H&L(HRP) at 1:10000 dilution was used as the secondary antibody. Lysate at 35ug.

**GBAS Antibody (Center) - References**

- Wang X.-Y.,et al.Genomics 49:448-451(1998).  
Seroussi E.,et al.Gene 212:13-20(1998).  
Kalnina N.,et al.Submitted (OCT-2004) to the EMBL/GenBank/DDBJ databases.  
Ota T.,et al.Nat. Genet. 36:40-45(2004).  
Ebert L.,et al.Submitted (MAY-2004) to the EMBL/GenBank/DDBJ databases.

**GBAS Antibody (Center) - Citations**

- [Mitochondrial proteins NIP-SNAP-1 and -2 are a target for the immunomodulatory activity of clarithromycin, which involves NF- \$\kappa\$ B-mediated cytokine production.](#)