

SV2C Antibody (C-term)
Purified Rabbit Polyclonal Antibody (Pab)
Catalog # AP20824c**Specification**

SV2C Antibody (C-term) - Product Information

Application	WB,E
Primary Accession	Q496J9
Reactivity	Rat
Host	Rabbit
Clonality	Polyclonal
Isotype	Rabbit IgG
Calculated MW	82342
Antigen Region	547-580

SV2C Antibody (C-term) - Additional Information**Gene ID** 22987**Other Names**

Synaptic vesicle glycoprotein 2C, SV2C, KIAA1054

Target/Specificity

This SV2C antibody is generated from a rabbit immunized with a KLH conjugated synthetic peptide between 547-580 amino acids from the C-terminal region of human SV2C.

Dilution

WB~~1:1000

Format

Purified polyclonal antibody supplied in PBS with 0.09% (W/V) sodium azide. This antibody is purified through a protein A column, followed by peptide affinity purification.

Storage

Maintain refrigerated at 2-8°C for up to 2 weeks. For long term storage store at -20°C in small aliquots to prevent freeze-thaw cycles.

Precautions

SV2C Antibody (C-term) is for research use only and not for use in diagnostic or therapeutic procedures.

SV2C Antibody (C-term) - Protein Information**Name** SV2C**Synonyms** KIAA1054**Function** Plays a role in the control of regulated secretion in neural and endocrine cells,

enhancing selectively low-frequency neurotransmission. Positively regulates vesicle fusion by maintaining the readily releasable pool of secretory vesicles.

Cellular Location

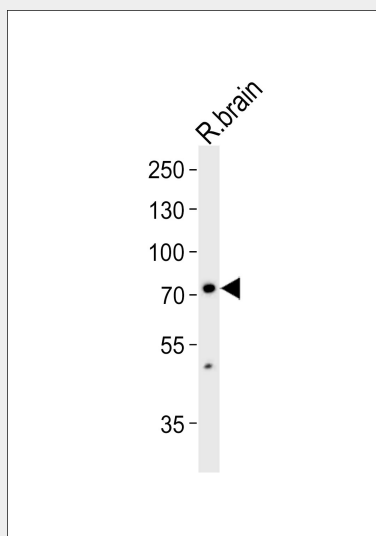
Cytoplasmic vesicle, secretory vesicle, synaptic vesicle membrane {ECO:0000250|UniProtKB:Q9Z2I6}; Multi-pass membrane protein {ECO:0000250|UniProtKB:Q9Z2I6}. Note=Enriched in small synaptic vesicles and adrenal microsomes, not present in chromaffin granules Associated with both insulin granules and synaptic-like microvesicles in insulin-secreting cells of the pancreas {ECO:0000250|UniProtKB:Q9Z2I6}

SV2C Antibody (C-term) - Protocols

Provided below are standard protocols that you may find useful for product applications.

- [Western Blot](#)
- [Blocking Peptides](#)
- [Dot Blot](#)
- [Immunohistochemistry](#)
- [Immunofluorescence](#)
- [Immunoprecipitation](#)
- [Flow Cytometry](#)
- [Cell Culture](#)

SV2C Antibody (C-term) - Images



Western blot analysis of lysate from rat brain tissue lysate, using SV2C Antibody (C-term)(Cat. #AP20824c). AP20824c was diluted at 1:1000. A goat anti-rabbit IgG H&L(HRP) at 1:10000 dilution was used as the secondary antibody. Lysate at 35ug.

SV2C Antibody (C-term) - Background

Plays a role in the control of regulated secretion in neural and endocrine cells, enhancing selectively low-frequency neurotransmission. Positively regulates vesicle fusion by maintaining the readily releasable pool of secretory vesicles (By similarity).

SV2C Antibody (C-term) - References

Kikuno R.,et al.DNA Res. 6:197-205(1999).