

MRGPRX3 Antibody (N-term)
Purified Rabbit Polyclonal Antibody (Pab)
Catalog # AP20838a**Specification**

MRGPRX3 Antibody (N-term) - Product Information

| | |
|-------------------|------------------------|
| Application | WB,E |
| Primary Accession | Q96LB0 |
| Reactivity | Human |
| Host | Rabbit |
| Clonality | Polyclonal |
| Isotype | Rabbit IgG |
| Calculated MW | 36483 |

MRGPRX3 Antibody (N-term) - Additional Information**Gene ID** 117195**Other Names**

Mas-related G-protein coupled receptor member X3, Sensory neuron-specific G-protein coupled receptor 1/2, MRGPRX3, MRGX3, SNSR1, SNSR2

Target/Specificity

This MRGPRX3 antibody is generated from a rabbit immunized with a KLH conjugated synthetic peptide between 9-43 amino acids from the N-terminal region of human MRGPRX3.

Dilution

WB~~1:1000

E~~Use at an assay dependent concentration.

Format

Purified polyclonal antibody supplied in PBS with 0.09% (W/V) sodium azide. This antibody is purified through a protein A column, followed by peptide affinity purification.

Storage

Maintain refrigerated at 2-8°C for up to 2 weeks. For long term storage store at -20°C in small aliquots to prevent freeze-thaw cycles.

Precautions

MRGPRX3 Antibody (N-term) is for research use only and not for use in diagnostic or therapeutic procedures.

MRGPRX3 Antibody (N-term) - Protein Information**Name** MRGPRX3**Synonyms** MRGX3, SNSR1, SNSR2

Function Orphan receptor. Probably involved in the function of nociceptive neurons. May regulate nociceptor function and/or development, including the sensation or modulation of pain. Potently activated by enkephalins (By similarity).

Cellular Location

Cell membrane; Multi-pass membrane protein.

Tissue Location

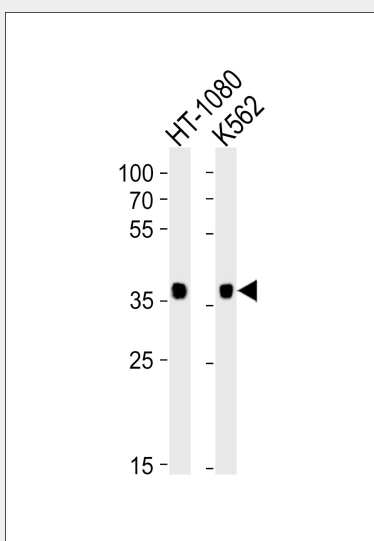
Uniquely localized in a subset of small dorsal root and trigeminal sensory neurons.

MRGPRX3 Antibody (N-term) - Protocols

Provided below are standard protocols that you may find useful for product applications.

- [Western Blot](#)
- [Blocking Peptides](#)
- [Dot Blot](#)
- [Immunohistochemistry](#)
- [Immunofluorescence](#)
- [Immunoprecipitation](#)
- [Flow Cytometry](#)
- [Cell Culture](#)

MRGPRX3 Antibody (N-term) - Images



Western blot analysis of lysates from HT-1080, K562 cell line (from left to right), using MRGPRX3 Antibody (N-term)(Cat. #AP20838a). AP20838a was diluted at 1:1000 at each lane. A goat anti-rabbit IgG H&L(HRP) at 1:10000 dilution was used as the secondary antibody. Lysates at 35ug per lane.

MRGPRX3 Antibody (N-term) - Background

Orphan receptor. Probably involved in the function of nociceptive neurons. May regulate nociceptor function and/or development, including the sensation or modulation of pain. Potently activated by enkephalins (By similarity).

MRGPRX3 Antibody (N-term) - References

Dong X.,et al.Cell 106:619-632(2001).
Lembo P.M.C.,et al.Nat. Neurosci. 5:201-209(2002).
Martin A.L.,et al.Submitted (DEC-2007) to the EMBL/GenBank/DDBJ databases.
Taylor T.D.,et al.Nature 440:497-500(2006).
Mural R.J.,et al.Submitted (SEP-2005) to the EMBL/GenBank/DDBJ databases.