

SERPINE1 Antibody (C-term)
Purified Rabbit Polyclonal Antibody (Pab)
Catalog # AP20852c

Specification

SERPINE1 Antibody (C-term) - Product Information

Application	WB,E
Primary Accession	P05121
Reactivity	Human
Host	Rabbit
Clonality	Polyclonal
Isotype	Rabbit IgG
Calculated MW	45060

SERPINE1 Antibody (C-term) - Additional Information

Gene ID 5054

Other Names

Plasminogen activator inhibitor 1, PAI, PAI-1, Endothelial plasminogen activator inhibitor, Serpin E1, SERPINE1, PAI1, PLANH1

Target/Specificity

This SERPINE1 antibody is generated from a rabbit immunized with a KLH conjugated synthetic peptide between 323-357 amino acids from the C-terminal region of human SERPINE1.

Dilution

WB~~1:1000

E~~Use at an assay dependent concentration.

Format

Purified polyclonal antibody supplied in PBS with 0.09% (W/V) sodium azide. This antibody is purified through a protein A column, followed by peptide affinity purification.

Storage

Maintain refrigerated at 2-8°C for up to 2 weeks. For long term storage store at -20°C in small aliquots to prevent freeze-thaw cycles.

Precautions

SERPINE1 Antibody (C-term) is for research use only and not for use in diagnostic or therapeutic procedures.

SERPINE1 Antibody (C-term) - Protein Information

Name SERPINE1

Synonyms PAI1, PLANH1

Function Serine protease inhibitor. Inhibits TMPRSS7 (PubMed:[15853774](#)). Is a primary inhibitor of tissue-type plasminogen activator (PLAT) and urokinase-type plasminogen activator (PLAU). As PLAT inhibitor, it is required for fibrinolysis down-regulation and is responsible for the controlled degradation of blood clots (PubMed:[17912461](#), PubMed:[8481516](#), PubMed:[9207454](#), PubMed:[21925150](#)). As PLAU inhibitor, it is involved in the regulation of cell adhesion and spreading (PubMed:[9175705](#)). Acts as a regulator of cell migration, independently of its role as protease inhibitor (PubMed:[15001579](#), PubMed:[9168821](#)). It is required for stimulation of keratinocyte migration during cutaneous injury repair (PubMed:[18386027](#)). It is involved in cellular and replicative senescence (PubMed:[16862142](#)). Plays a role in alveolar type 2 cells senescence in the lung (By similarity). Is involved in the regulation of cementogenic differentiation of periodontal ligament stem cells, and regulates odontoblast differentiation and dentin formation during odontogenesis (PubMed:[25808697](#), PubMed:[27046084](#)).

Cellular Location

Secreted.

Tissue Location

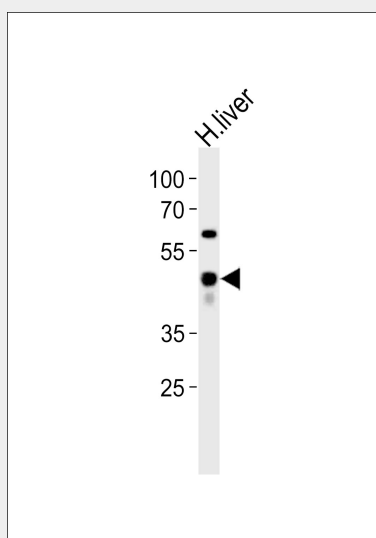
Expressed in endothelial cells (PubMed:2430793, PubMed:3097076). Found in plasma, platelets, and hepatoma and fibrosarcoma cells.

SERPINE1 Antibody (C-term) - Protocols

Provided below are standard protocols that you may find useful for product applications.

- [Western Blot](#)
- [Blocking Peptides](#)
- [Dot Blot](#)
- [Immunohistochemistry](#)
- [Immunofluorescence](#)
- [Immunoprecipitation](#)
- [Flow Cytometry](#)
- [Cell Culture](#)

SERPINE1 Antibody (C-term) - Images



Western blot analysis of lysate from human liver tissue, using SERPINE1 Antibody (C-term)(Cat. #AP20852c). AP20852c was diluted at 1:1000. A goat anti-rabbit IgG H&L(HRP) at 1:10000

dilution was used as the secondary antibody. Lysate at 20ug.

SERPINE1 Antibody (C-term) - Background

Serine protease inhibitor. This inhibitor acts as 'bait' for tissue plasminogen activator, urokinase, protein C and matriptase-3/TMPRSS7. Its rapid interaction with PLAT may function as a major control point in the regulation of fibrinolysis.

SERPINE1 Antibody (C-term) - References

Pannekoek H.,et al.EMBO J. 5:2539-2544(1986).
Loskutoff D.J.,et al.Biochemistry 26:3763-3768(1987).
Ginsburg D.,et al.J. Clin. Invest. 78:1673-1680(1986).
Follo M.,et al.Gene 84:447-453(1989).
Strandberg L.,et al.Eur. J. Biochem. 176:609-616(1988).