

Mouse Kdm6b Antibody (Center)
Purified Rabbit Polyclonal Antibody (Pab)
Catalog # AP20854c**Specification**

Mouse Kdm6b Antibody (Center) - Product Information

Application	WB,E
Primary Accession	Q5NCY0
Reactivity	Human, Mouse
Host	Rabbit
Clonality	Polyclonal
Isotype	Rabbit IgG

Mouse Kdm6b Antibody (Center) - Additional Information**Gene ID** 216850**Other Names**

Lysine-specific demethylase 6B, 11411-, JmjC domain-containing protein 3, Jumonji domain-containing protein 3, Kdm6b, Jmjd3, Kiaa0346

Target/Specificity

This Mouse Kdm6b antibody is generated from a rabbit immunized with a KLH conjugated synthetic peptide between 1023-1057 amino acids of Mouse Kdm6b.

Dilution

WB~~1:1000

E~~Use at an assay dependent concentration.

Format

Purified polyclonal antibody supplied in PBS with 0.09% (W/V) sodium azide. This antibody is purified through a protein A column, followed by peptide affinity purification.

Storage

Maintain refrigerated at 2-8°C for up to 2 weeks. For long term storage store at -20°C in small aliquots to prevent freeze-thaw cycles.

Precautions

Mouse Kdm6b Antibody (Center) is for research use only and not for use in diagnostic or therapeutic procedures.

Mouse Kdm6b Antibody (Center) - Protein Information**Name** Kdm6b**Synonyms** Jmjd3, Kiaa0346**Function** Histone demethylase that specifically demethylates 'Lys-27' of histone H3, thereby

playing a central role in histone code. Demethylates trimethylated and dimethylated H3 'Lys-27'. Plays a central role in regulation of posterior development, by regulating HOX gene expression. Involved in inflammatory response by participating in macrophage differentiation in case of inflammation by regulating gene expression and macrophage differentiation (PubMed:[17825402](#)). Plays a demethylase-independent role in chromatin remodeling to regulate T-box family member-dependent gene expression by acting as a link between T-box factors and the SMARCA4-containing SWI/SNF remodeling complex (PubMed:[21095589](#)).

Cellular Location

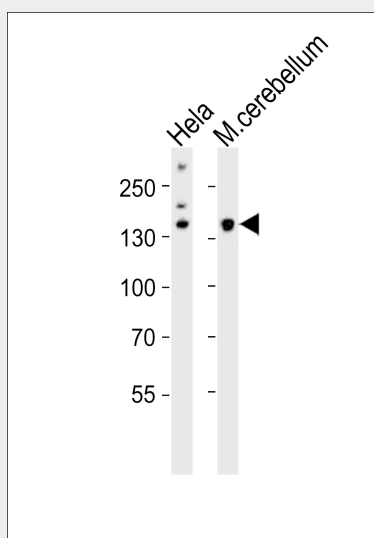
Nucleus.

Mouse Kdm6b Antibody (Center) - Protocols

Provided below are standard protocols that you may find useful for product applications.

- [Western Blot](#)
- [Blocking Peptides](#)
- [Dot Blot](#)
- [Immunohistochemistry](#)
- [Immunofluorescence](#)
- [Immunoprecipitation](#)
- [Flow Cytometry](#)
- [Cell Culture](#)

Mouse Kdm6b Antibody (Center) - Images



Western blot analysis of lysates from HeLa cell line, mouse cerebellum tissue (from left to right), using Mouse Kdm6b Antibody (Center)(Cat. #AP20854c). AP20854c was diluted at 1:1000 at each lane. A goat anti-rabbit IgG H&L(HRP) at 1:10000 dilution was used as the secondary antibody. Lysates at 20ug per lane.

Mouse Kdm6b Antibody (Center) - Background

Histone demethylase that specifically demethylates 'Lys- 27' of histone H3, thereby playing a central role in histone code. Demethylates trimethylated and dimethylated H3 'Lys-27'. Plays a central role in regulation of posterior development, by regulating HOX gene expression. Involved in inflammatory response by participating in macrophage differentiation in case of inflammation by

regulating gene expression and macrophage differentiation.

Mouse Kdm6b Antibody (Center) - References

Church D.M.,et al.PLoS Biol. 7:E1000112-E1000112(2009).

Okazaki N.,et al.DNA Res. 10:167-180(2003).

Carninci P.,et al.Science 309:1559-1563(2005).

De Santa F.,et al.Cell 130:1083-1094(2007).

Mouse Kdm6b Antibody (Center) - Citations

- [Esculetin protects against early sepsis via attenuating inflammation by inhibiting NF-κB and STAT1/STAT3 signaling](#)