

NTF3 Antibody (Center)
Purified Rabbit Polyclonal Antibody (Pab)
Catalog # AP20855c**Specification**

NTF3 Antibody (Center) - Product Information

Application	WB,E
Primary Accession	P20783
Other Accession	P18280 , P20181
Reactivity	Human, Mouse, Rat
Host	Rabbit
Clonality	Polyclonal
Isotype	Rabbit IgG
Calculated MW	29355

NTF3 Antibody (Center) - Additional Information**Gene ID** 4908**Other Names**

Neurotrophin-3, NT-3, HDNF, Nerve growth factor 2, NGF-2, Neurotrophic factor, NTF3

Target/Specificity

This NTF3 antibody is generated from a rabbit immunized with a KLH conjugated synthetic peptide between 89-120 amino acids from the Central region of human NTF3.

Dilution

WB~~1:1000

E~~Use at an assay dependent concentration.

Format

Purified polyclonal antibody supplied in PBS with 0.09% (W/V) sodium azide. This antibody is purified through a protein A column, followed by peptide affinity purification.

Storage

Maintain refrigerated at 2-8°C for up to 2 weeks. For long term storage store at -20°C in small aliquots to prevent freeze-thaw cycles.

Precautions

NTF3 Antibody (Center) is for research use only and not for use in diagnostic or therapeutic procedures.

NTF3 Antibody (Center) - Protein Information**Name** NTF3**Function** Seems to promote the survival of visceral and proprioceptive sensory neurons.

Cellular Location
Secreted.

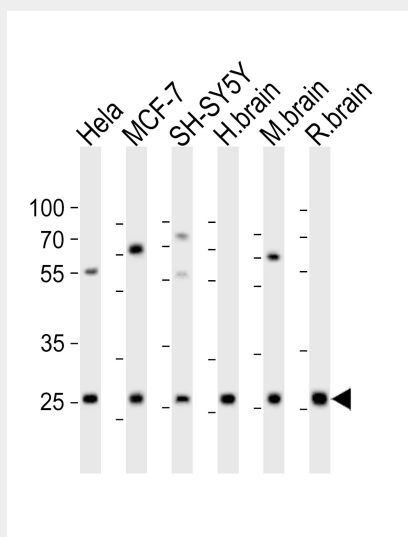
Tissue Location
Brain and peripheral tissues.

NTF3 Antibody (Center) - Protocols

Provided below are standard protocols that you may find useful for product applications.

- [Western Blot](#)
- [Blocking Peptides](#)
- [Dot Blot](#)
- [Immunohistochemistry](#)
- [Immunofluorescence](#)
- [Immunoprecipitation](#)
- [Flow Cytometry](#)
- [Cell Culture](#)

NTF3 Antibody (Center) - Images



Western blot analysis of lysates from HeLa, MCF-7, SH-SY5Y cell line, human brain, mouse brain, rat brain tissue (from left to right), using NTF3 Antibody (Center)(Cat. #AP20855c). AP20855c was diluted at 1:1000 at each lane. A goat anti-rabbit IgG H&L(HRP) at 1:10000 dilution was used as the secondary antibody. Lysates at 20ug per lane.

NTF3 Antibody (Center) - Background

Seems to promote the survival of visceral and proprioceptive sensory neurons.

NTF3 Antibody (Center) - References

- Kaisho Y.,et al.FEBS Lett. 266:187-191(1990).
Rosenthal A.,et al.Neuron 4:767-773(1990).
Jones K.R.,et al.Proc. Natl. Acad. Sci. U.S.A. 87:8060-8064(1990).
Maisonpierre P.C.,et al.Genomics 10:558-568(1991).
Ota T.,et al.Nat. Genet. 36:40-45(2004).

