

**Mouse Sbk1 Antibody (N-term)**  
**Purified Rabbit Polyclonal Antibody (Pab)**  
**Catalog # AP20874b****Specification**

---

**Mouse Sbk1 Antibody (N-term) - Product Information**

Application	WB,E
Primary Accession	<a href="#">Q8QZX0</a>
Other Accession	<a href="#">Q9Z335</a>
Reactivity	Mouse
Predicted	Rat
Host	Rabbit
Clonality	Polyclonal
Isotype	Rabbit IgG
Antigen Region	65-98

**Mouse Sbk1 Antibody (N-term) - Additional Information****Gene ID** 104175**Other Names**

Serine/threonine-protein kinase SBK1, SH3-binding kinase 1, Sbk1, Sbk

**Target/Specificity**

This Mouse Sbk1 antibody is generated from a rabbit immunized with a KLH conjugated synthetic peptide between 65-98 amino acids from the N-terminal region of Mouse Sbk1.

**Dilution**

WB~~1:500-1:1000

E~~Use at an assay dependent concentration.

**Format**

Purified polyclonal antibody supplied in PBS with 0.09% (W/V) sodium azide. This antibody is purified through a protein A column, followed by peptide affinity purification.

**Storage**

Maintain refrigerated at 2-8°C for up to 2 weeks. For long term storage store at -20°C in small aliquots to prevent freeze-thaw cycles.

**Precautions**

Mouse Sbk1 Antibody (N-term) is for research use only and not for use in diagnostic or therapeutic procedures.

**Mouse Sbk1 Antibody (N-term) - Protein Information****Name** Sbk1**Synonyms** Sbk

**Function** May be involved in signal-transduction pathways related to the control of brain development.

**Cellular Location**

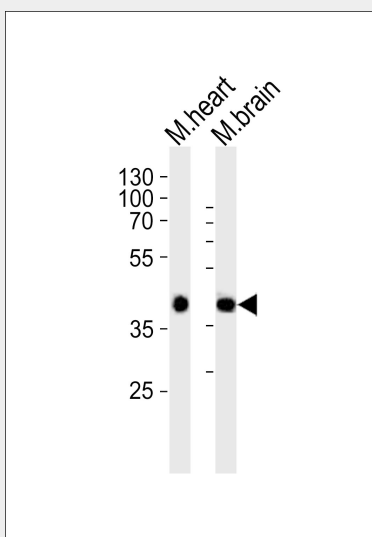
Cytoplasm.

**Mouse Sbk1 Antibody (N-term) - Protocols**

Provided below are standard protocols that you may find useful for product applications.

- [Western Blot](#)
- [Blocking Peptides](#)
- [Dot Blot](#)
- [Immunohistochemistry](#)
- [Immunofluorescence](#)
- [Immunoprecipitation](#)
- [Flow Cytometry](#)
- [Cell Culture](#)

**Mouse Sbk1 Antibody (N-term) - Images**



Western blot analysis of lysates from mouse heart, mouse brain tissue lysate (from left to right), using Sbk1 Antibody (N-term)(Cat. #AP20874b). AP20874b was diluted at 1:1000 at each lane. A goat anti-rabbit IgG H&L(HRP) at 1:10000 dilution was used as the secondary antibody. Lysates at 20ug per lane.

**Mouse Sbk1 Antibody (N-term) - Background**

May be involved in signal-transduction pathways related to the control of brain development (By similarity).