

**PrLZ Antibody (Center)**  
**Purified Rabbit Polyclonal Antibody (Pab)**  
**Catalog # AP20875a**

**Specification**

---

**PrLZ Antibody (Center) - Product Information**

Application	WB,E
Primary Accession	<a href="#">D0UFD5</a>
Other Accession	<a href="#">P55327</a>
Reactivity	Mouse
Host	Rabbit
Clonality	Polyclonal
Isotype	Rabbit IgG

**PrLZ Antibody (Center) - Additional Information**

**Other Names**

Protein N8;Tumor protein D52

**Target/Specificity**

This PrLZ antibody is generated from a rabbit immunized with a KLH conjugated synthetic peptide between 100-132 amino acids from the Central region of human PrLZ.

**Dilution**

WB~~1:1000

E~~Use at an assay dependent concentration.

**Format**

Purified polyclonal antibody supplied in PBS with 0.09% (W/V) sodium azide. This antibody is purified through a protein A column, followed by peptide affinity purification.

**Storage**

Maintain refrigerated at 2-8°C for up to 2 weeks. For long term storage store at -20°C in small aliquots to prevent freeze-thaw cycles.

**Precautions**

PrLZ Antibody (Center) is for research use only and not for use in diagnostic or therapeutic procedures.

**PrLZ Antibody (Center) - Protein Information**

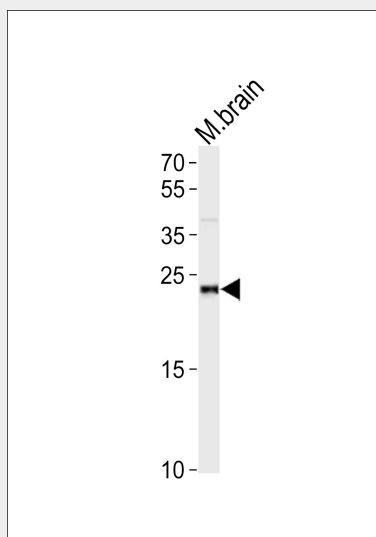
**PrLZ Antibody (Center) - Protocols**

Provided below are standard protocols that you may find useful for product applications.

- [Western Blot](#)

- [Blocking Peptides](#)
- [Dot Blot](#)
- [Immunohistochemistry](#)
- [Immunofluorescence](#)
- [Immunoprecipitation](#)
- [Flow Cytometry](#)
- [Cell Culture](#)

#### PrLZ Antibody (Center) - Images



Western blot analysis of lysate from mouse brain tissue lysate, using PrLZ Antibody (Center)(Cat. #AP20875a). AP20875a was diluted at 1:1000. A goat anti-rabbit IgG H&L(HRP) at 1:10000 dilution was used as the secondary antibody. Lysate at 20ug.