

Frk Antibody (C-term)
Purified Rabbit Polyclonal Antibody (Pab)
Catalog # AP20886c**Specification**

Frk Antibody (C-term) - Product Information

Application	WB,E
Primary Accession	P42685
Other Accession	Q922K9 , Q62662
Reactivity	Human, Mouse, Rat
Host	Rabbit
Clonality	Polyclonal
Isotype	Rabbit IgG

Frk Antibody (C-term) - Additional Information**Gene ID** 2444**Other Names**

Tyrosine-protein kinase FRK, Beta-cell Src-homology tyrosine kinase, BSK, FYN-related kinase, Intestine tyrosine kinase, Frk, Bsk, lyk

Target/Specificity

This Frk antibody is generated from a rabbit immunized with a KLH conjugated synthetic peptide between 482-516 amino acids from the C-terminal region of human Frk.

Dilution

WB~~1:500-1:1000

E~~Use at an assay dependent concentration.

Format

Purified polyclonal antibody supplied in PBS with 0.09% (W/V) sodium azide. This antibody is purified through a protein A column, followed by peptide affinity purification.

Storage

Maintain refrigerated at 2-8°C for up to 2 weeks. For long term storage store at -20°C in small aliquots to prevent freeze-thaw cycles.

Precautions

Frk Antibody (C-term) is for research use only and not for use in diagnostic or therapeutic procedures.

Frk Antibody (C-term) - Protein Information**Name** FRK**Synonyms** PTK5, RAK

Function Non-receptor tyrosine-protein kinase that negatively regulates cell proliferation. Positively regulates PTEN protein stability through phosphorylation of PTEN on 'Tyr-336', which in turn prevents its ubiquitination and degradation, possibly by reducing its binding to NEDD4. May function as a tumor suppressor.

Cellular Location

Cytoplasm. Nucleus. Note=Predominantly found in the nucleus, with a small fraction found in the cell periphery

Tissue Location

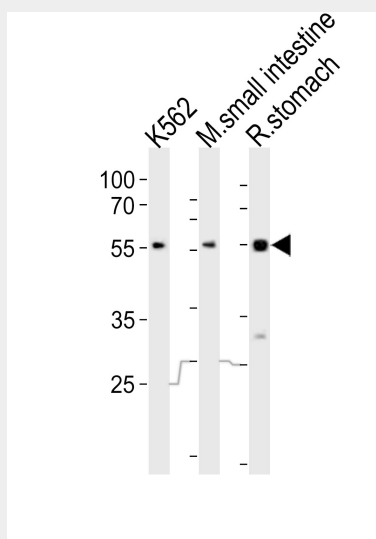
Predominantly expressed in epithelial derived cell lines and tissues, especially normal liver, kidney, breast and colon

Frk Antibody (C-term) - Protocols

Provided below are standard protocols that you may find useful for product applications.

- [Western Blot](#)
- [Blocking Peptides](#)
- [Dot Blot](#)
- [Immunohistochemistry](#)
- [Immunofluorescence](#)
- [Immunoprecipitation](#)
- [Flow Cytometry](#)
- [Cell Culture](#)

Frk Antibody (C-term) - Images



Western blot analysis of lysates from K562 cell line, mouse small intestine, rat stomach tissue lysate(from left to right), using Frk Antibody (C-term)(Cat. #AP20886c). AP20886c was diluted at 1:1000 at each lane. A goat anti-rabbit IgG H&L(HRP) at 1:10000 dilution was used as the secondary antibody. Lysates at 20ug per lane.

Frk Antibody (C-term) - Background

Non-receptor tyrosine-protein kinase that negatively regulates cell proliferation. Positively regulates PTEN protein stability through phosphorylation of PTEN on 'Tyr-336', which in turn

prevents its ubiquitination and degradation, possibly by reducing its binding to NEDD4. May function as a tumor suppressor (By similarity).

Frk Antibody (C-term) - References

Thuveson M.,et al.Biochem. Biophys. Res. Commun. 209:582-589(1995).

Oberg-Welsh C.,et al.Gene 152:239-242(1995).

Carninci P.,et al.Science 309:1559-1563(2005).

Chandrasekharan S.,et al.Mol. Cell. Biol. 22:5235-5247(2002).

Welsh M.,et al.Biochem. J. 382:261-268(2004).