

**ATP5D Antibody (C-term)**  
**Purified Rabbit Polyclonal Antibody (Pab)**  
**Catalog # AP20890c****Specification**

---

**ATP5D Antibody (C-term) - Product Information**

Application	WB,E
Primary Accession	<a href="#">P30049</a>
Other Accession	<a href="#">P35434</a> , <a href="#">Q9D3D9</a> , <a href="#">P05630</a>
Reactivity	Human, Mouse, Rat
Predicted	Bovine
Host	Rabbit
Clonality	Polyclonal
Isotype	Rabbit IgG
Calculated MW	17490

**ATP5D Antibody (C-term) - Additional Information****Gene ID** 513**Other Names**

ATP synthase subunit delta, mitochondrial, F-ATPase delta subunit, ATP5D

**Target/Specificity**

This ATP5D antibody is generated from a rabbit immunized with a KLH conjugated synthetic peptide between 156-188 amino acids from the C-terminal region of human ATP5D.

**Dilution**

WB~~1:1000-1:4000

E~~Use at an assay dependent concentration.

**Format**

Purified polyclonal antibody supplied in PBS with 0.09% (W/V) sodium azide. This antibody is purified through a protein A column, followed by peptide affinity purification.

**Storage**

Maintain refrigerated at 2-8°C for up to 2 weeks. For long term storage store at -20°C in small aliquots to prevent freeze-thaw cycles.

**Precautions**

ATP5D Antibody (C-term) is for research use only and not for use in diagnostic or therapeutic procedures.

**ATP5D Antibody (C-term) - Protein Information****Name** ATP5F1D ([HGNC:837](#))**Function** Subunit delta, of the mitochondrial membrane ATP synthase complex (F(1)F(0) ATP

synthase or Complex V) that produces ATP from ADP in the presence of a proton gradient across the membrane which is generated by electron transport complexes of the respiratory chain (Probable) (PubMed:[37244256](#)). ATP synthase complex consist of a soluble F(1) head domain - the catalytic core - and a membrane F(1) domain - the membrane proton channel (PubMed:[37244256](#)). These two domains are linked by a central stalk rotating inside the F(1) region and a stationary peripheral stalk (PubMed:[37244256](#)). During catalysis, ATP synthesis in the catalytic domain of F(1) is coupled via a rotary mechanism of the central stalk subunits to proton translocation (Probable). In vivo, can only synthesize ATP although its ATP hydrolase activity can be activated artificially in vitro (By similarity). With the central stalk subunit gamma, is essential for the biogenesis of F(1) catalytic part of the ATP synthase complex namely in the formation of F1 assembly intermediate (PubMed:[29499186](#)).

### Cellular Location

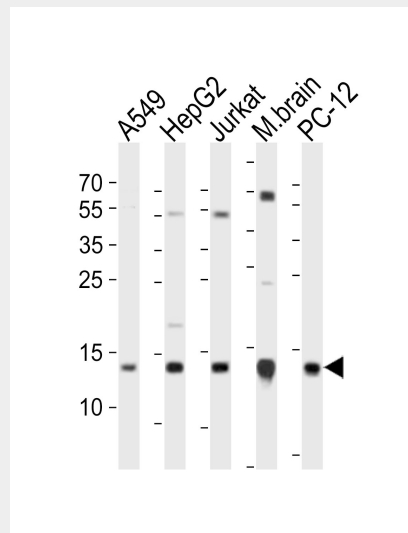
Mitochondrion. Mitochondrion inner membrane.

### ATP5D Antibody (C-term) - Protocols

Provided below are standard protocols that you may find useful for product applications.

- [Western Blot](#)
- [Blocking Peptides](#)
- [Dot Blot](#)
- [Immunohistochemistry](#)
- [Immunofluorescence](#)
- [Immunoprecipitation](#)
- [Flow Cytometry](#)
- [Cell Culture](#)

### ATP5D Antibody (C-term) - Images



Western blot analysis of lysates from A549, HepG2, Jurkat cell line, mouse brain tissue lysate, rat PC-12 cell line (from left to right), using ATP5D Antibody (C-term)(Cat. #AP20890c). AP20890c was diluted at 1:1000 at each lane. A goat anti-rabbit IgG H&L(HRP) at 1:10000 dilution was used as the secondary antibody. Lysates at 20ug per lane.

### ATP5D Antibody (C-term) - Background

Mitochondrial membrane ATP synthase (F(1)F(0) ATP synthase or Complex V) produces ATP from ADP in the presence of a proton gradient across the membrane which is generated by electron transport complexes of the respiratory chain. F-type ATPases consist of two structural domains, F(1) - containing the extramembraneous catalytic core, and F(0) - containing the membrane proton channel, linked together by a central stalk and a peripheral stalk. During catalysis, ATP turnover in the catalytic domain of F(1) is coupled via a rotary mechanism of the central stalk subunits to proton translocation. Part of the complex F(1) domain and of the central stalk which is part of the complex rotary element. Rotation of the central stalk against the surrounding alpha(3)beta(3) subunits leads to hydrolysis of ATP in three separate catalytic sites on the beta subunits.

#### **ATP5D Antibody (C-term) - References**

Jordan E.M.,et al.Biochim. Biophys. Acta 1130:123-126(1992).  
Halleck A.,et al.Submitted (JUN-2004) to the EMBL/GenBank/DDBJ databases.  
Grimwood J.,et al.Nature 428:529-535(2004).  
Mural R.J.,et al.Submitted (SEP-2005) to the EMBL/GenBank/DDBJ databases.  
Hochstrasser D.F.,et al.Electrophoresis 13:992-1001(1992).