

FOXN4 Antibody (Center)
Purified Rabbit Polyclonal Antibody (Pab)
Catalog # AP20908a**Specification**

FOXN4 Antibody (Center) - Product Information

Application	WB,E
Primary Accession	O96NZ1
Reactivity	Human
Host	Rabbit
Clonality	Polyclonal
Isotype	Rabbit IgG
Calculated MW	55215

FOXN4 Antibody (Center) - Additional Information**Gene ID** 121643**Other Names**

Forkhead box protein N4, FOXN4

Target/Specificity

This FOXN4 antibody is generated from a rabbit immunized with a KLH conjugated synthetic peptide between 314-349 amino acids from the Central region of human FOXN4.

Dilution

WB~~1:1000

E~~Use at an assay dependent concentration.

Format

Purified polyclonal antibody supplied in PBS with 0.09% (W/V) sodium azide. This antibody is purified through a protein A column, followed by peptide affinity purification.

Storage

Maintain refrigerated at 2-8°C for up to 2 weeks. For long term storage store at -20°C in small aliquots to prevent freeze-thaw cycles.

Precautions

FOXN4 Antibody (Center) is for research use only and not for use in diagnostic or therapeutic procedures.

FOXN4 Antibody (Center) - Protein Information**Name** FOXN4

Function Transcription factor essential for neural and some non-neural tissues development, such as retina and lung respectively. Binds to an 11-bp consensus sequence containing the invariant tetranucleotide 5'-ACGC-3'. During development of the central nervous system, is required to

specify the amacrine and horizontal cell fates from multipotent retinal progenitors while suppressing the alternative photoreceptor cell fates through activating DLL4-NOTCH signaling. Also acts synergistically with ASCL1/MASH1 to activate DLL4-NOTCH signaling and drive commitment of p2 progenitors to the V2b interneuron fates during spinal cord neurogenesis. In development of non-neural tissues, plays an essential role in the specification of the atrioventricular canal and is indirectly required for patterning the distal airway during lung development (By similarity).

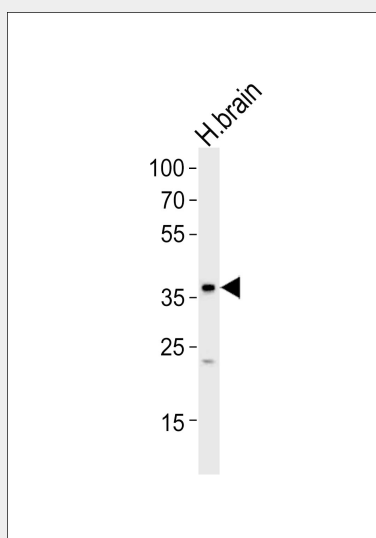
Cellular Location

Nucleus {ECO:0000255|PROSITE-ProRule:PRU00089}.

FOXN4 Antibody (Center) - Protocols

Provided below are standard protocols that you may find useful for product applications.

- [Western Blot](#)
- [Blocking Peptides](#)
- [Dot Blot](#)
- [Immunohistochemistry](#)
- [Immunofluorescence](#)
- [Immunoprecipitation](#)
- [Flow Cytometry](#)
- [Cell Culture](#)

FOXN4 Antibody (Center) - Images

Western blot analysis of lysate from human brain tissue lysate, using FOXN4 Antibody (Center)(Cat. #AP20908a). AP20908a was diluted at 1:1000. A goat anti-rabbit IgG H&L(HRP) at 1:10000 dilution was used as the secondary antibody. Lysate at 20ug.

FOXN4 Antibody (Center) - References

Scherer S.E.,et al.Nature 440:346-351(2006).
Danilova N.,et al.Brain Res. Dev. Brain Res. 153:115-119(2004).
Ota T.,et al.Nat. Genet. 36:40-45(2004).