

**(RAT) Ccnd3 Antibody (N-term)**  
**Purified Rabbit Polyclonal Antibody (Pab)**  
**Catalog # AP20912b**

**Specification**

---

**(RAT) Ccnd3 Antibody (N-term) - Product Information**

Application	WB,E
Primary Accession	<a href="#">P48961</a>
Reactivity	Rat
Host	Rabbit
Clonality	Polyclonal
Isotype	Rabbit IgG

**(RAT) Ccnd3 Antibody (N-term) - Additional Information**

**Gene ID** 25193

**Other Names**

G1/S-specific cyclin-D3, Ccnd3

**Target/Specificity**

This rat Ccnd3 antibody is generated from a rabbit immunized with a KLH conjugated synthetic peptide between 33-66 amino acids from the N-terminal region of rat Ccnd3.

**Dilution**

WB~~1:500-1:1000

E~~Use at an assay dependent concentration.

**Format**

Purified polyclonal antibody supplied in PBS with 0.09% (W/V) sodium azide. This antibody is purified through a protein A column, followed by peptide affinity purification.

**Storage**

Maintain refrigerated at 2-8°C for up to 2 weeks. For long term storage store at -20°C in small aliquots to prevent freeze-thaw cycles.

**Precautions**

(RAT) Ccnd3 Antibody (N-term) is for research use only and not for use in diagnostic or therapeutic procedures.

**(RAT) Ccnd3 Antibody (N-term) - Protein Information**

**Name** Ccnd3 {ECO:0000312|RGD:2293}

**Function** Regulatory component of the cyclin D3-CDK4 (DC) complex that phosphorylates and inhibits members of the retinoblastoma (RB) protein family including RB1 and regulates the cell-cycle during G(1)/S transition. Phosphorylation of RB1 allows dissociation of the transcription factor E2F from the RB/E2F complex and the subsequent transcription of E2F target genes which

are responsible for the progression through the G(1) phase. Hypophosphorylates RB1 in early G(1) phase. Cyclin D-CDK4 complexes are major integrators of various mitogenic and antimitogenic signals. Component of the ternary complex, cyclin D3/CDK4/CDKN1B, required for nuclear translocation and activity of the cyclin D-CDK4 complex. Shows transcriptional coactivator activity with ATF5 independently of CDK4.

#### Cellular Location

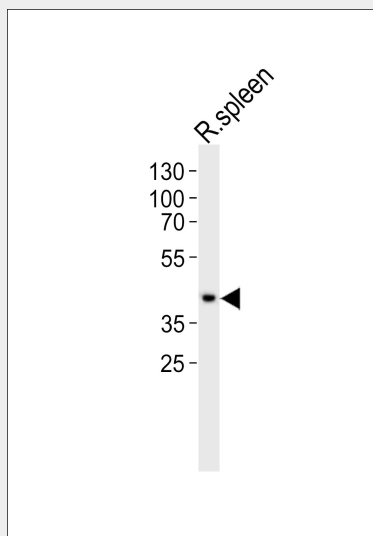
Nucleus {ECO:0000250|UniProtKB:P30281}. Cytoplasm {ECO:0000250|UniProtKB:P30281}

#### (RAT) Ccnd3 Antibody (N-term) - Protocols

Provided below are standard protocols that you may find useful for product applications.

- [Western Blot](#)
- [Blocking Peptides](#)
- [Dot Blot](#)
- [Immunohistochemistry](#)
- [Immunofluorescence](#)
- [Immunoprecipitation](#)
- [Flow Cytometry](#)
- [Cell Culture](#)

#### (RAT) Ccnd3 Antibody (N-term) - Images



Western blot analysis of lysate from rat spleen tissue, using Ccnd3 Antibody (N-term)(Cat. #AP20912b). AP20912b was diluted at 1:1000. A goat anti-rabbit IgG H&L(HRP) at 1:10000 dilution was used as the secondary antibody. Lysate at 20ug.

#### (RAT) Ccnd3 Antibody (N-term) - Background

Regulatory component of the cyclin D3-CDK4 (DC) complex that phosphorylates and inhibits members of the retinoblastoma (RB) protein family including RB1 and regulates the cell-cycle during G(1)/S transition. Phosphorylation of RB1 allows dissociation of the transcription factor E2F from the RB/E2F complex and the subsequent transcription of E2F target genes which are responsible for the progression through the G(1) phase. Hypophosphorylates RB1 in early G(1) phase. Cyclin D-CDK4 complexes are major integrators of various mitogenic and antimitogenic signals. Also substrate for SMAD3, phosphorylating SMAD3 in a cell-cycle-dependent manner and

repressing its transcriptional activity. Component of the ternary complex, cyclin D3/CDK4/CDKN1B, required for nuclear translocation and activity of the cyclin D-CDK4 complex.

**(RAT) Ccnd3 Antibody (N-term) - References**

Hosokawa Y., et al. Gene 147:249-252(1994).

Yang M., et al. Gene 181:153-159(1996).