

STAG2 Antibody (N-term)
Purified Rabbit Polyclonal Antibody (Pab)
Catalog # AP20917b**Specification**

STAG2 Antibody (N-term) - Product Information

Application	WB,E
Primary Accession	Q8N3U4
Reactivity	Human
Host	Rabbit
Clonality	Polyclonal
Isotype	Rabbit IgG
Calculated MW	141326

STAG2 Antibody (N-term) - Additional Information**Gene ID** 10735**Other Names**

Cohesin subunit SA-2, SCC3 homolog 2, Stromal antigen 2, STAG2, SA2

Target/Specificity

This STAG2 antibody is generated from a rabbit immunized with a KLH conjugated synthetic peptide between 61-94 amino acids from the N-terminal region of human STAG2.

Dilution

WB~~1:1000

Format

Purified polyclonal antibody supplied in PBS with 0.09% (W/V) sodium azide. This antibody is purified through a protein A column, followed by peptide affinity purification.

Storage

Maintain refrigerated at 2-8°C for up to 2 weeks. For long term storage store at -20°C in small aliquots to prevent freeze-thaw cycles.

Precautions

STAG2 Antibody (N-term) is for research use only and not for use in diagnostic or therapeutic procedures.

STAG2 Antibody (N-term) - Protein Information**Name** STAG2**Synonyms** SA2

Function Component of cohesin complex, a complex required for the cohesion of sister chromatids after DNA replication. The cohesin complex apparently forms a large proteinaceous

ring within which sister chromatids can be trapped. At anaphase, the complex is cleaved and dissociates from chromatin, allowing sister chromatids to segregate. The cohesin complex may also play a role in spindle pole assembly during mitosis.

Cellular Location

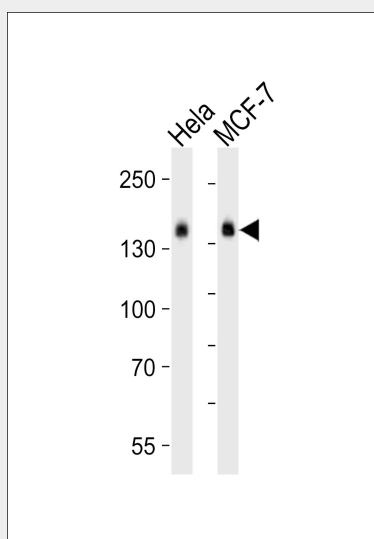
Nucleus. Chromosome. Chromosome, centromere. Note=Associates with chromatin. Before prophase it is scattered along chromosome arms. During prophase, most of cohesin complexes dissociate from chromatin probably because of phosphorylation by PLK1, except at centromeres, where cohesin complexes remain. At anaphase, the RAD21 subunit of cohesin is cleaved, leading to the dissociation of the complex from chromosomes, allowing chromosome separation. In germ cells, cohesin complex dissociates from chromatin at prophase I, and may be replaced by a meiosis-specific cohesin complex

STAG2 Antibody (N-term) - Protocols

Provided below are standard protocols that you may find useful for product applications.

- [Western Blot](#)
- [Blocking Peptides](#)
- [Dot Blot](#)
- [Immunohistochemistry](#)
- [Immunofluorescence](#)
- [Immunoprecipitation](#)
- [Flow Cytometry](#)
- [Cell Culture](#)

STAG2 Antibody (N-term) - Images



Western blot analysis of lysates from HeLa, MCF-7 cell line (from left to right), using STAG2 Antibody (N-term)(Cat. #AP20917b). AP20917b was diluted at 1:1000 at each lane. A goat anti-rabbit IgG H&L(HRP) at 1:10000 dilution was used as the secondary antibody. Lysates at 20ug per lane.

STAG2 Antibody (N-term) - Background

Component of cohesin complex, a complex required for the cohesion of sister chromatids after DNA replication. The cohesin complex apparently forms a large proteinaceous ring within which

sister chromatids can be trapped. At anaphase, the complex is cleaved and dissociates from chromatin, allowing sister chromatids to segregate. The cohesin complex may also play a role in spindle pole assembly during mitosis.

STAG2 Antibody (N-term) - References

Bechtel S.,et al.BMC Genomics 8:399-399(2007).
Ross M.T.,et al.Nature 434:325-337(2005).
Mural R.J.,et al.Submitted (SEP-2005) to the EMBL/GenBank/DDBJ databases.
Carramolino L.,et al.Gene 195:151-159(1997).
Carramolino L.,et al.Gene 206:283-286(1998).