

**SMG7 Antibody (C-term)**  
**Purified Rabbit Polyclonal Antibody (Pab)**  
**Catalog # AP20918c****Specification**

---

**SMG7 Antibody (C-term) - Product Information**

Application	WB,E
Primary Accession	<a href="#">O92540</a>
Other Accession	<a href="#">Q5RJH6</a>
Reactivity	Human
Predicted	Mouse
Host	Rabbit
Clonality	Polyclonal
Isotype	Rabbit IgG
Calculated MW	127282

**SMG7 Antibody (C-term) - Additional Information****Gene ID** 9887**Other Names**

Protein SMG7, EST1-like protein C, SMG-7 homolog, hSMG-7, SMG7, C1orf16, EST1C, KIAA0250

**Target/Specificity**

This SMG7 antibody is generated from a rabbit immunized with a KLH conjugated synthetic peptide between 896-930 amino acids from the C-terminal region of human SMG7.

**Dilution**

WB~~1:500-1:1000

E~~Use at an assay dependent concentration.

**Format**

Purified polyclonal antibody supplied in PBS with 0.09% (W/V) sodium azide. This antibody is purified through a protein A column, followed by peptide affinity purification.

**Storage**

Maintain refrigerated at 2-8°C for up to 2 weeks. For long term storage store at -20°C in small aliquots to prevent freeze-thaw cycles.

**Precautions**

SMG7 Antibody (C-term) is for research use only and not for use in diagnostic or therapeutic procedures.

**SMG7 Antibody (C-term) - Protein Information****Name** SMG7 ([HGNC:16792](#))**Function** Plays a role in nonsense-mediated mRNA decay. Recruits UPF1 to cytoplasmic mRNA

decay bodies. Together with SMG5 is thought to provide a link to the mRNA degradation machinery involving exonucleolytic pathways, and to serve as an adapter for UPF1 to protein phosphatase 2A (PP2A), thereby triggering UPF1 dephosphorylation.

#### **Cellular Location**

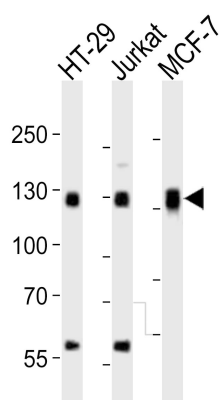
Cytoplasm. Nucleus. Note=Predominantly cytoplasmic, and nuclear. Shuttles between nucleus and cytoplasm

#### **SMG7 Antibody (C-term) - Protocols**

Provided below are standard protocols that you may find useful for product applications.

- [Western Blot](#)
- [Blocking Peptides](#)
- [Dot Blot](#)
- [Immunohistochemistry](#)
- [Immunofluorescence](#)
- [Immunoprecipitation](#)
- [Flow Cytometry](#)
- [Cell Culture](#)

#### **SMG7 Antibody (C-term) - Images**



Western blot analysis of lysates from HT-29, Jurkat, MCF-7 cell line (from left to right), using SMG7 Antibody (C-term)(Cat. #AP20918c). AP20918c was diluted at 1:1000 at each lane. A goat anti-rabbit IgG H&L(HRP) at 1:10000 dilution was used as the secondary antibody. Lysates at 20ug per lane.

#### **SMG7 Antibody (C-term) - Background**

Plays a role in nonsense-mediated mRNA decay. Recruits UPF1 to cytoplasmic mRNA decay bodies. Together with SMG5 is thought to provide a link to the mRNA degradation machinery involving exonucleolytic pathways, and to serve as an adapter for UPF1 to protein phosphatase 2A (PP2A), thereby triggering UPF1 dephosphorylation.

#### **SMG7 Antibody (C-term) - References**

Ohnishi T.,et al.Mol. Cell 12:1187-1200(2003).  
Nagase T.,et al.DNA Res. 3:321-329(1996).  
Nakajima D.,et al.DNA Res. 9:99-106(2002).  
Ota T.,et al.Nat. Genet. 36:40-45(2004).  
Gregory S.G.,et al.Nature 441:315-321(2006).