

**Mouse Epha6 Antibody (C-term)**  
**Purified Rabbit Polyclonal Antibody (Pab)**  
**Catalog # AP20923c****Specification**

---

**Mouse Epha6 Antibody (C-term) - Product Information**

Application	WB,E
Primary Accession	<a href="#">Q62413</a>
Other Accession	<a href="#">P54758</a> , <a href="#">Q9UF33</a>
Reactivity	Human, Mouse
Predicted	Rat
Host	Rabbit
Clonality	Polyclonal
Isotype	Rabbit IgG
Calculated MW	116185

**Mouse Epha6 Antibody (C-term) - Additional Information****Other Names**

Ephrin type-A receptor 6, EPH homology kinase 2, EHK-2, Epha6, Ehk-2, Ehk2

**Target/Specificity**

This Mouse Epha6 antibody is generated from a rabbit immunized with a KLH conjugated synthetic peptide between 930-961 amino acids from the C-terminal region of Mouse Epha6.

**Dilution**

WB~~1:1000

E~~Use at an assay dependent concentration.

**Format**

Purified polyclonal antibody supplied in PBS with 0.09% (W/V) sodium azide. This antibody is purified through a protein A column, followed by peptide affinity purification.

**Storage**

Maintain refrigerated at 2-8°C for up to 2 weeks. For long term storage store at -20°C in small aliquots to prevent freeze-thaw cycles.

**Precautions**

Mouse Epha6 Antibody (C-term) is for research use only and not for use in diagnostic or therapeutic procedures.

**Mouse Epha6 Antibody (C-term) - Protein Information**

**Name** Epha6

**Synonyms** Ehk-2, Ehk2

**Function** Receptor tyrosine kinase which binds promiscuously GPI- anchored ephrin-A family

ligands residing on adjacent cells, leading to contact-dependent bidirectional signaling into neighboring cells. The signaling pathway downstream of the receptor is referred to as forward signaling while the signaling pathway downstream of the ephrin ligand is referred to as reverse signaling (By similarity).

#### Cellular Location

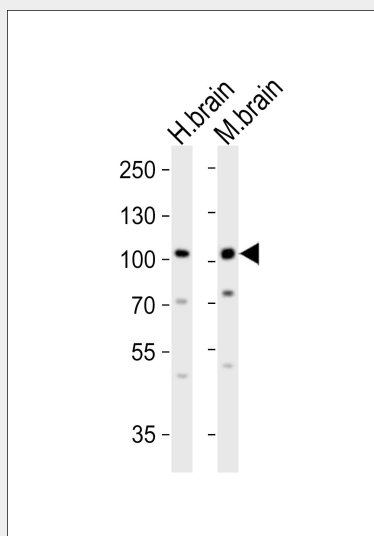
Membrane; Single-pass type I membrane protein.

#### Mouse Epha6 Antibody (C-term) - Protocols

Provided below are standard protocols that you may find useful for product applications.

- [Western Blot](#)
- [Blocking Peptides](#)
- [Dot Blot](#)
- [Immunohistochemistry](#)
- [Immunofluorescence](#)
- [Immunoprecipitation](#)
- [Flow Cytometry](#)
- [Cell Culture](#)

#### Mouse Epha6 Antibody (C-term) - Images



Western blot analysis of lysates from human brain and mouse brain tissue (from left to right), using Epha6 Antibody (C-term)(Cat. #AP20923c). AP20923c was diluted at 1:1000 at each lane. A goat anti-rabbit IgG H&L(HRP) at 1:10000 dilution was used as the secondary antibody. Lysates at 20ug per lane.

#### Mouse Epha6 Antibody (C-term) - Background

Receptor tyrosine kinase which binds promiscuously GPI- anchored ephrin-A family ligands residing on adjacent cells, leading to contact-dependent bidirectional signaling into neighboring cells. The signaling pathway downstream of the receptor is referred to as forward signaling while the signaling pathway downstream of the ephrin ligand is referred to as reverse signaling (By similarity).

#### Mouse Epha6 Antibody (C-term) - References

Lee A.M.,et al.DNA Cell Biol. 15:817-825(1996).  
Mural R.J.,et al.Submitted (JUL-2005) to the EMBL/GenBank/DDBJ databases.  
Carninci P.,et al.Science 309:1559-1563(2005).