

**Mouse Hes1 Antibody (Center)**  
**Purified Rabbit Polyclonal Antibody (Pab)**  
**Catalog # AP20925a****Specification**

---

**Mouse Hes1 Antibody (Center) - Product Information**

Application	WB,E
Primary Accession	<a href="#">P35428</a>
Other Accession	<a href="#">Q04666</a> , <a href="#">Q14469</a> , <a href="#">Q3ZBG4</a> , <a href="#">Q8AVU4</a> , <a href="#">Q6IRB2</a>
Reactivity	Mouse
Predicted	Xenopus, Bovine, Human, Rat
Host	Rabbit
Clonality	Polyclonal
Isotype	Rabbit IgG
Calculated MW	29749

**Mouse Hes1 Antibody (Center) - Additional Information****Gene ID** 15205**Other Names**

Transcription factor HES-1, Hairy and enhancer of split 1, Hes1, Hes-1

**Target/Specificity**

This Mouse Hes1 antibody is generated from a rabbit immunized with a KLH conjugated synthetic peptide between 102-137 amino acids from the Central region of Mouse Hes1.

**Dilution**

WB~~1:1000

E~~Use at an assay dependent concentration.

**Format**

Purified polyclonal antibody supplied in PBS with 0.09% (W/V) sodium azide. This antibody is purified through a protein A column, followed by peptide affinity purification.

**Storage**

Maintain refrigerated at 2-8°C for up to 2 weeks. For long term storage store at -20°C in small aliquots to prevent freeze-thaw cycles.

**Precautions**

Mouse Hes1 Antibody (Center) is for research use only and not for use in diagnostic or therapeutic procedures.

**Mouse Hes1 Antibody (Center) - Protein Information****Name** Hes1**Synonyms** Hes-1

**Function** Transcriptional repressor of genes that require a bHLH protein for their transcription. May act as a negative regulator of myogenesis by inhibiting the functions of MYOD1 and ASH1 (By similarity). Binds DNA on N-box motifs: 5'-CACNAG-3' with high affinity and on E-box motifs: 5'-CANNTG-3' with low affinity. May play a role in a functional FA core complex response to DNA cross-link damage, being required for the stability and nuclear localization of FA core complex proteins, as well as for FANCD2 monoubiquitination in response to DNA damage (By similarity).

**Cellular Location**

Nucleus.

**Tissue Location**

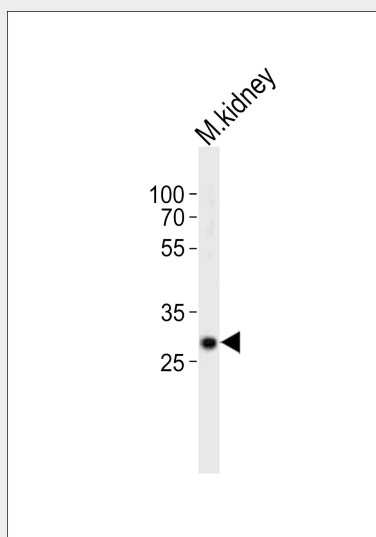
Expressed at high levels in undifferentiated neural precursor cells, but the level of expression decreases as neural differentiation proceeds

**Mouse Hes1 Antibody (Center) - Protocols**

Provided below are standard protocols that you may find useful for product applications.

- [Western Blot](#)
- [Blocking Peptides](#)
- [Dot Blot](#)
- [Immunohistochemistry](#)
- [Immunofluorescence](#)
- [Immunoprecipitation](#)
- [Flow Cytometry](#)
- [Cell Culture](#)

**Mouse Hes1 Antibody (Center) - Images**



Western blot analysis of lysate from mouse kidney tissue, using Hes1 Antibody (Center)(Cat. #AP20925a). AP20925a was diluted at 1:1000. A goat anti-rabbit IgG H&L(HRP) at 1:10000 dilution was used as the secondary antibody. Lysate at 20ug.

**Mouse Hes1 Antibody (Center) - Background**

Transcriptional repressor of genes that require a bHLH protein for their transcription. May act as a negative regulator of myogenesis by inhibiting the functions of MYOD1 and ASH1 (By similarity).

Binds DNA on N-box motifs: 5'-CACNAG-3' with high affinity and on E-box motifs: 5'-CANNTG-3' with low affinity. May play a role in a functional FA core complex response to DNA cross- link damage, being required for the stability and nuclear localization of FA core complex proteins, as well as for FANCD2 monoubiquitination in response to DNA damage (By similarity).

#### **Mouse Hes1 Antibody (Center) - References**

Takebayashi K.,et al.J. Biol. Chem. 269:5150-5156(1994).  
Grbavec D.,et al.Eur. J. Biochem. 258:339-349(1998).  
Bae S.-K.,et al.Development 127:2933-2943(2000).