

**PPP2R1B Antibody (N-term)**  
**Purified Rabbit Polyclonal Antibody (Pab)**  
**Catalog # AP20940b**

**Specification**

---

**PPP2R1B Antibody (N-term) - Product Information**

Application	WB,E
Primary Accession	<a href="#">P30154</a>
Other Accession	<a href="#">Q4QQT4</a> , <a href="#">P54613</a> , <a href="#">Q7TNP2</a>
Reactivity	Human, Mouse, Rat
Predicted	Pig
Host	Rabbit
Clonality	Polyclonal
Isotype	Rabbit IgG
Calculated MW	66214

**PPP2R1B Antibody (N-term) - Additional Information**

**Gene ID** 5519

**Other Names**

Serine/threonine-protein phosphatase 2A 65 kDa regulatory subunit A beta isoform, PP2A subunit A isoform PR65-beta, PP2A subunit A isoform R1-beta, PPP2R1B

**Target/Specificity**

This PPP2R1B antibody is generated from a rabbit immunized with a KLH conjugated synthetic peptide between 86-120 amino acids from the N-terminal region of human PPP2R1B.

**Dilution**

WB~~1:1000

E~~Use at an assay dependent concentration.

**Format**

Purified polyclonal antibody supplied in PBS with 0.09% (W/V) sodium azide. This antibody is purified through a protein A column, followed by peptide affinity purification.

**Storage**

Maintain refrigerated at 2-8°C for up to 2 weeks. For long term storage store at -20°C in small aliquots to prevent freeze-thaw cycles.

**Precautions**

PPP2R1B Antibody (N-term) is for research use only and not for use in diagnostic or therapeutic procedures.

**PPP2R1B Antibody (N-term) - Protein Information**

**Name** PPP2R1B

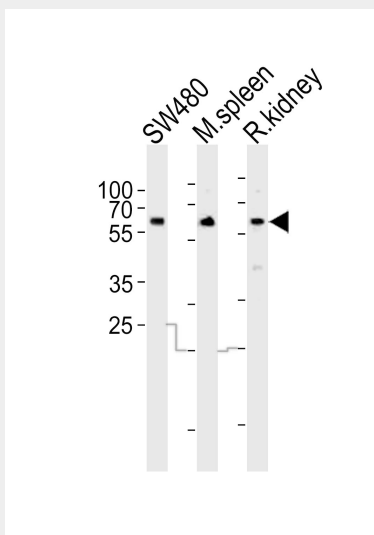
**Function** The PR65 subunit of protein phosphatase 2A serves as a scaffolding molecule to coordinate the assembly of the catalytic subunit and a variable regulatory B subunit.

### PPP2R1B Antibody (N-term) - Protocols

Provided below are standard protocols that you may find useful for product applications.

- [Western Blot](#)
- [Blocking Peptides](#)
- [Dot Blot](#)
- [Immunohistochemistry](#)
- [Immunofluorescence](#)
- [Immunoprecipitation](#)
- [Flow Cytometry](#)
- [Cell Culture](#)

### PPP2R1B Antibody (N-term) - Images



Western blot analysis of lysates from SW480 cell line mouse spleen, rat kidney tissue (from left to right), using PPP2R1B Antibody (N-term)(Cat. #AP20940b). AP20940b was diluted at 1:1000 at each lane. A goat anti-rabbit IgG H&L(HRP) at 1:10000 dilution was used as the secondary antibody. Lysates at 20ug per lane.

### PPP2R1B Antibody (N-term) - Background

The PR65 subunit of protein phosphatase 2A serves as a scaffolding molecule to coordinate the assembly of the catalytic subunit and a variable regulatory B subunit.

### PPP2R1B Antibody (N-term) - References

Baysal B.E.,et al.Gene 217:107-116(1998).  
Wang S.S.,et al.Science 282:284-287(1998).  
Baysal B.E.,et al.Eur. J. Hum. Genet. 9:121-129(2001).  
Ota T.,et al.Nat. Genet. 36:40-45(2004).  
Taylor T.D.,et al.Nature 440:497-500(2006).