

**RBBP5 Antibody (C-term)**  
**Purified Rabbit Polyclonal Antibody (Pab)**  
**Catalog # AP20943c****Specification**

---

**RBBP5 Antibody (C-term) - Product Information**

Application	WB, IF, E
Primary Accession	<a href="#">Q15291</a>
Other Accession	<a href="#">Q8BX09</a>
Reactivity	Human, Mouse
Host	Rabbit
Clonality	Polyclonal
Isotype	Rabbit IgG
Calculated MW	59153

**RBBP5 Antibody (C-term) - Additional Information****Gene ID** 5929**Other Names**

Retinoblastoma-binding protein 5, RBBP-5, Retinoblastoma-binding protein RBQ-3, RBBP5, RBQ3

**Target/Specificity**

This RBBP5 antibody is generated from a rabbit immunized with a KLH conjugated synthetic peptide between 451-485 amino acids from the C-terminal region of human RBBP5.

**Dilution**

WB~~1:1000

IF~~1:25

E~~Use at an assay dependent concentration.

**Format**

Purified polyclonal antibody supplied in PBS with 0.09% (W/V) sodium azide. This antibody is purified through a protein A column, followed by peptide affinity purification.

**Storage**

Maintain refrigerated at 2-8°C for up to 2 weeks. For long term storage store at -20°C in small aliquots to prevent freeze-thaw cycles.

**Precautions**

RBBP5 Antibody (C-term) is for research use only and not for use in diagnostic or therapeutic procedures.

**RBBP5 Antibody (C-term) - Protein Information****Name** RBBP5**Synonyms** RBQ3

**Function** In embryonic stem (ES) cells, plays a crucial role in the differentiation potential, particularly along the neural lineage, regulating gene induction and H3 'Lys-4' methylation at key developmental loci, including that mediated by retinoic acid (By similarity). Does not affect ES cell self-renewal (By similarity). Component or associated component of some histone methyltransferase complexes which regulates transcription through recruitment of those complexes to gene promoters (PubMed:[19131338](#)). As part of the MLL1/MLL complex, involved in mono-, di- and trimethylation at 'Lys-4' of histone H3 (PubMed:[19556245](#)). Histone H3 'Lys-4' methylation represents a specific tag for epigenetic transcriptional activation (PubMed:[19556245](#)). In association with ASH2L and WDR5, stimulates the histone methyltransferase activities of KMT2A, KMT2B, KMT2C, KMT2D, SETD1A and SETD1B (PubMed:[21220120](#), PubMed:[22266653](#)).

#### **Cellular Location**

Nucleus.

#### **Tissue Location**

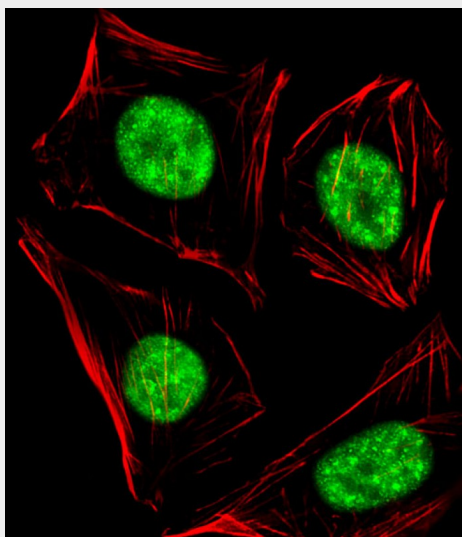
Ubiquitously expressed.

### **RBBP5 Antibody (C-term) - Protocols**

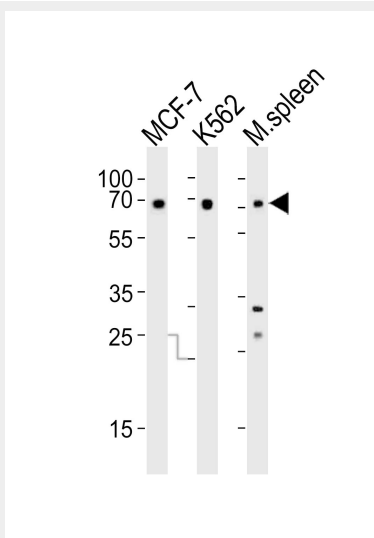
Provided below are standard protocols that you may find useful for product applications.

- [Western Blot](#)
- [Blocking Peptides](#)
- [Dot Blot](#)
- [Immunohistochemistry](#)
- [Immunofluorescence](#)
- [Immunoprecipitation](#)
- [Flow Cytometry](#)
- [Cell Culture](#)

### **RBBP5 Antibody (C-term) - Images**



Immunofluorescent analysis of 4% paraformaldehyde-fixed, 0.1% Triton X-100 permeabilized U-2 OS (Human osteosarcoma cell line) cells labeling RBBP5 with AP20943c at 1/25 dilution, followed by Alexa Fluor 488-conjugated goat anti-rabbit IgG (1583138) secondary antibody at 1/400 dilution (green). Confocal image showing nuclear staining on U-2 OS cell line. Cytoplasmic actin is detected with Alexa Fluor® 555 conjugated with Phalloidin (OB16636430) at 1/100 dilution (red).



Western blot analysis of lysates from MCF-7, K562 cell line and mouse spleen tissue(from left to right), using RBBP5 Antibody (C-term)(Cat. #AP20943c). AP20943c was diluted at 1:1000 at each lane. A goat anti-rabbit IgG H&L(HRP) at 1:10000 dilution was used as the secondary antibody. Lysates at 20ug per lane.

#### **RBBP5 Antibody (C-term) - Background**

In embryonic stem (ES) cells, plays a crucial role in the differentiation potential, particularly along the neural lineage, regulating gene induction and H3 'Lys-4' methylation at key developmental loci, including that mediated by retinoic acid (By similarity). As part of the MLL1/MLL complex, involved in mono-, di- and trimethylation at 'Lys-4' of histone H3. Histone H3 'Lys-4' methylation represents a specific tag for epigenetic transcriptional activation.

#### **RBBP5 Antibody (C-term) - References**

Saijo M.,et al.Genomics 27:511-519(1995).  
Ota T.,et al.Nat. Genet. 36:40-45(2004).  
Gregory S.G.,et al.Nature 441:315-321(2006).  
Mural R.J.,et al.Submitted (JUL-2005) to the EMBL/GenBank/DDBJ databases.  
Hughes C.M.,et al.Mol. Cell 13:587-597(2004).