

**Zebrafish ba1 Antibody (N-term)**  
**Purified Rabbit Polyclonal Antibody (Pab)**  
**Catalog # AP20954b****Specification**

---

**Zebrafish ba1 Antibody (N-term) - Product Information**

Application	WB,E
Primary Accession	<a href="#">Q90486</a>
Other Accession	<a href="#">Q90485</a>
Reactivity	Zebrafish
Host	Rabbit
Clonality	Polyclonal
Isotype	Rabbit IgG
Antigen Region	2-35

**Zebrafish ba1 Antibody (N-term) - Additional Information****Gene ID** 30216;504174**Other Names**

Hemoglobin subunit beta-1, Beta-1-globin, Beta-A1-globin, Hemoglobin beta-1 chain, ba1

**Target/Specificity**

This Zebrafish ba1 antibody is generated from a rabbit immunized with a KLH conjugated synthetic peptide between 2-35 amino acids from the N-terminal region of zebrafish ba1.

**Dilution**

WB~~1:1000

E~~Use at an assay dependent concentration.

**Format**

Purified polyclonal antibody supplied in PBS with 0.09% (W/V) sodium azide. This antibody is purified through a protein A column, followed by peptide affinity purification.

**Storage**

Maintain refrigerated at 2-8°C for up to 2 weeks. For long term storage store at -20°C in small aliquots to prevent freeze-thaw cycles.

**Precautions**

Zebrafish ba1 Antibody (N-term) is for research use only and not for use in diagnostic or therapeutic procedures.

**Zebrafish ba1 Antibody (N-term) - Protein Information****Name** ba1**Function** Involved in oxygen transport from gills to the various peripheral tissues.

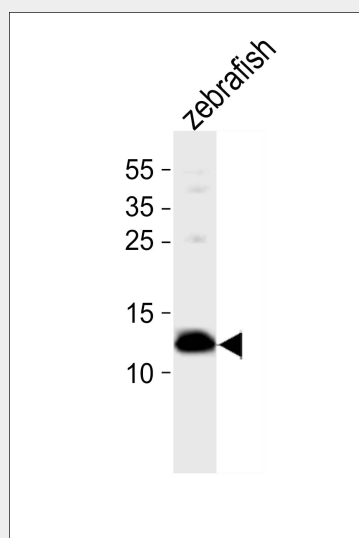
**Tissue Location**

Red blood cells..

**Zebrafish ba1 Antibody (N-term) - Protocols**

Provided below are standard protocols that you may find useful for product applications.

- [Western Blot](#)
- [Blocking Peptides](#)
- [Dot Blot](#)
- [Immunohistochemistry](#)
- [Immunofluorescence](#)
- [Immunoprecipitation](#)
- [Flow Cytometry](#)
- [Cell Culture](#)

**Zebrafish ba1 Antibody (N-term) - Images**

Western blot analysis of lysate from zebrafish tissue, using Zebrafish ba1 Antibody (N-term) (Cat. #AP20954b). AP20954b was diluted at 1:1000. A goat anti-rabbit IgG H&L (HRP) at 1:10000 dilution was used as the secondary antibody. Lysate at 5ug.

**Zebrafish ba1 Antibody (N-term) - Background**

Involved in oxygen transport from gills to the various peripheral tissues.

**Zebrafish ba1 Antibody (N-term) - References**

Chan F.-Y.,et al.Blood 89:688-700(1997).  
Howe K.,et al.Nature 496:498-503(2013).